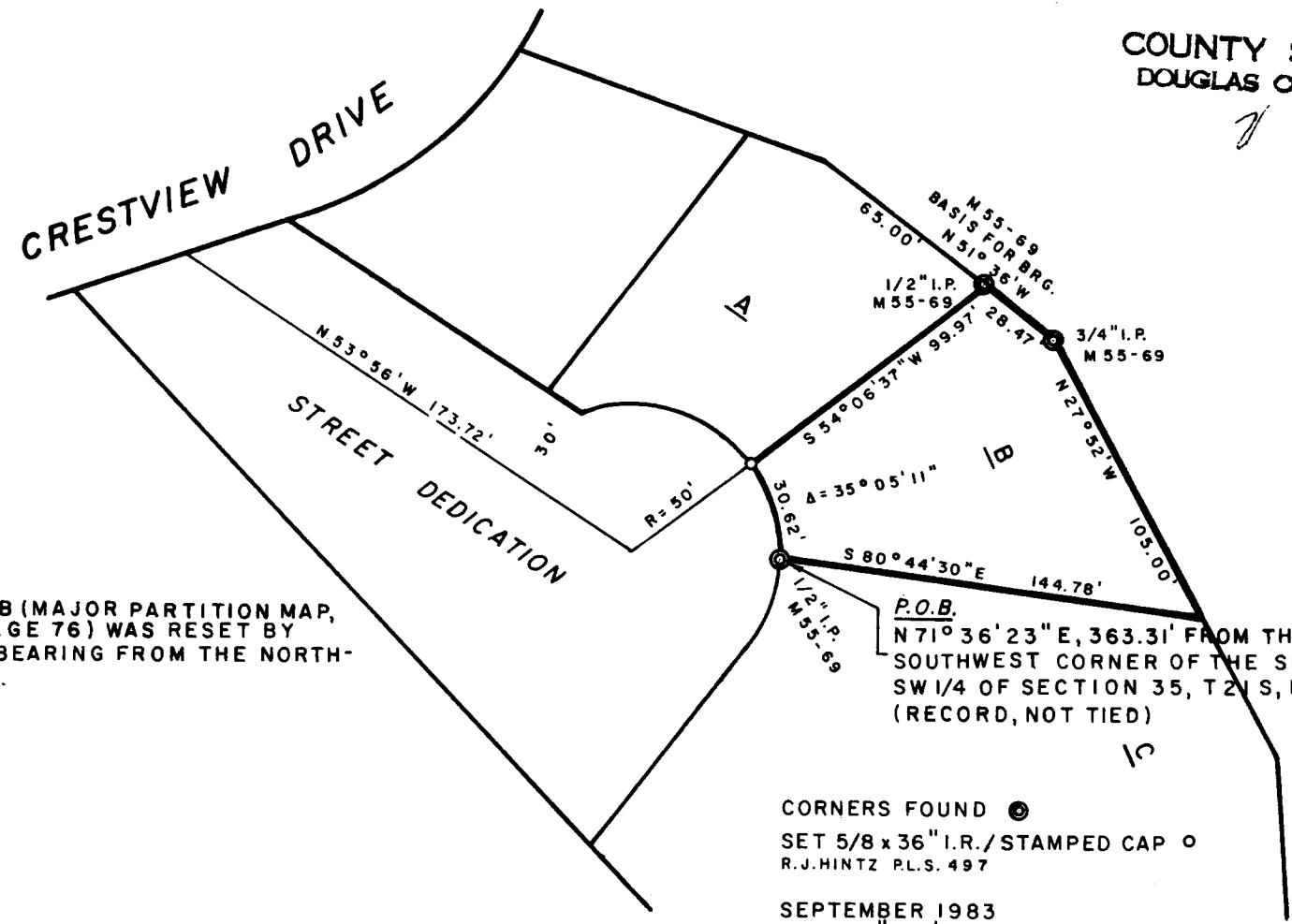


FILED *JL*  
RECEIVED *JL*

SEP 22 1983

COUNTY SURVEYOR  
DOUGLAS COUNTY, ORE.



**NARRATIVE**

THE NORTHWEST CORNER OF TRACT B (MAJOR PARTITION MAP, CITY OF REEDSPORT, IN BOOK 2, PAGE 76) WAS RESET BY USING THE RECORD DISTANCE AND BEARING FROM THE NORTH-EAST CORNER OF THE SAID TRACT B.

PROPERTY SURVEY  
FOR  
C.B. VICKREY

SW 1/4, SECTION 35, T21S, R12 W  
CITY OF REEDSPORT

**COUNTY SURVEYORS FILE DATA  
DO NOT REMOVE FROM OFFICE**

CORNERS FOUND ●  
SET 5/8 x 36" I.R./STAMPED CAP ○  
R.J.HINTZ P.L.S. 497

SEPTEMBER 1983  
SCALE 1" = 60'

NORTH ↑

**REGISTERED  
PROFESSIONAL  
LAND SURVEYOR**

*Richard J. Hintz*  
**OREGON  
MAY 12, 1980  
RICHARD J. HINTZ  
497**

RICHARD J. HINTZ  
1890 N. 14 TH ST.  
COOS BAY, OREGON