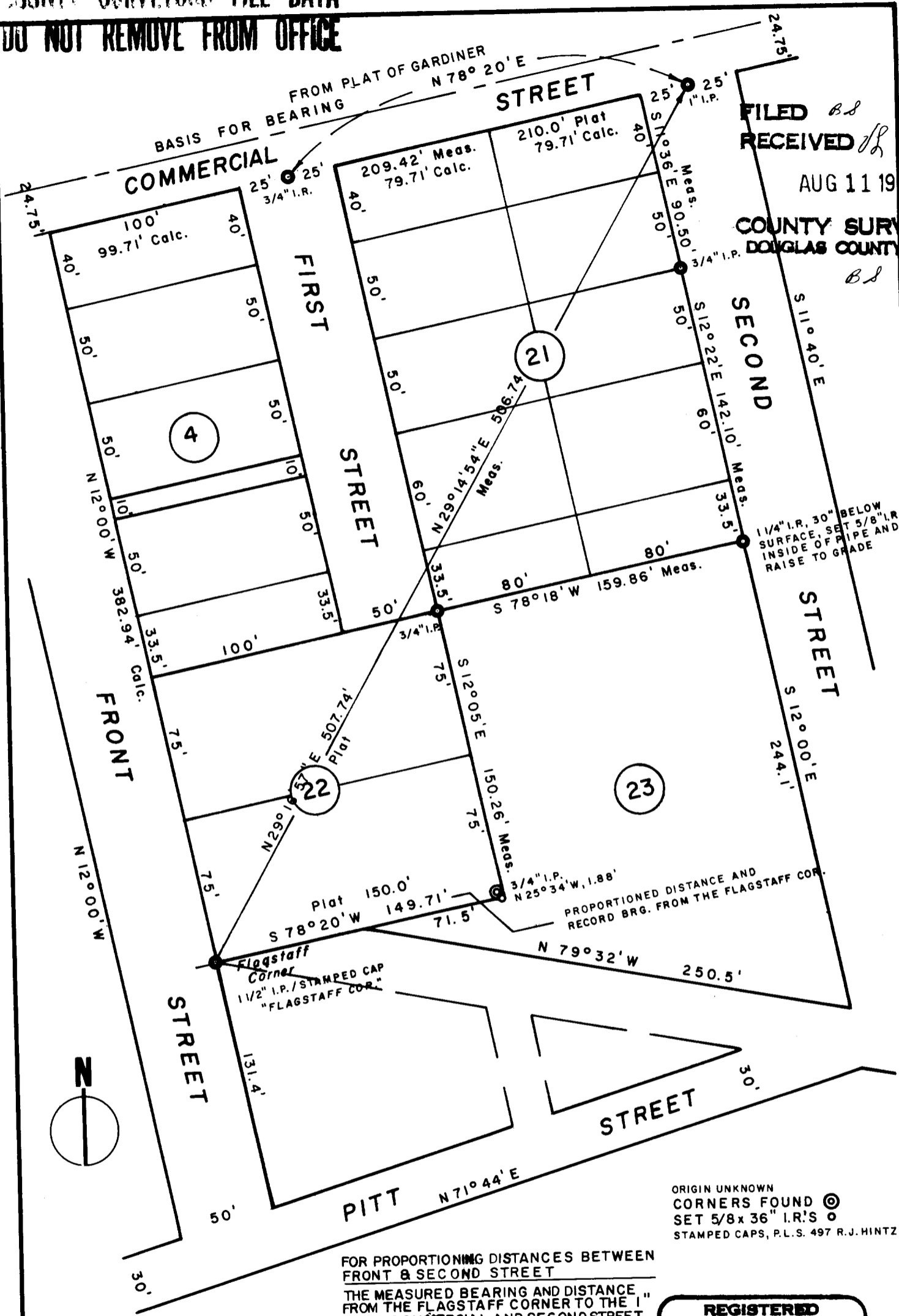


COUNTY SURVEYORS FILE DATA

DO NOT REMOVE FROM OFFICE

FILED *BL*
 RECEIVED *BL*
 AUG 11 1982
 COUNTY SURVEYOR
 DOUGLAS COUNTY, OREGON
BL



**PROPERTY SURVEY
 FOR
 FLORETTE JANELLE**
 BLOCK 23, TOWN OF GARDINER
 SW 1/4 SE 1/4 SEC. 22, T 21 S, R 12 W
 SCALE 1" = 60' JULY 1982

FOR PROPORTIONING DISTANCES BETWEEN
 FRONT & SECOND STREET
 THE MEASURED BEARING AND DISTANCE
 FROM THE FLAGSTAFF CORNER TO THE 1"
 I.P. AT COMMERCIAL AND SECOND STREET
 WAS HELD, ALSO THE RECORD ANGLE AT
 COMMERCIAL AND FRONT STREET WAS
 HELD. THE DISTANCES WERE PROPORTIONED
 PER PLAT RECORD.

ORIGIN UNKNOWN
 CORNERS FOUND ©
 SET 5/8 x 36" I.R.'S
 STAMPED CAPS, P.L.S. 497 R.J. HINTZ

**REGISTERED
 PROFESSIONAL
 LAND SURVEYOR**

Richard J. Hintz
**OREGON
 MAY 12, 1980
 RICHARD J. HINTZ**

RICHARD J. HINTZ
 1890 N. 14th ST.
 COOS BAY, OREGON