

FILED *BS*

RECEIVED *BS*

MAR 1 1982

# PROPERTY SURVEY FOR INTERNATIONAL PAPER CO.

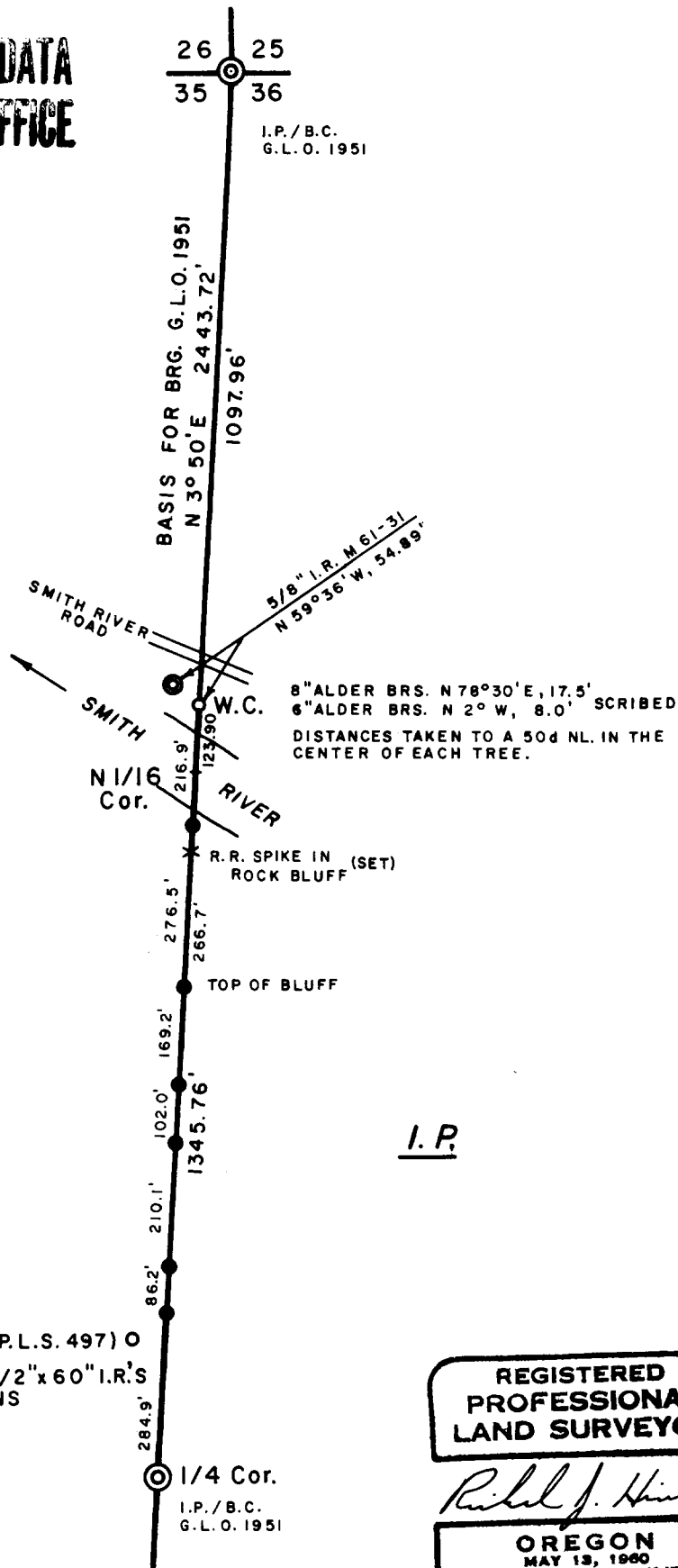
COUNTY SURVEYOR  
DOUGLAS COUNTY, ORE.

*BS*

NW 1/4, SECTION 36, T20S, R 10 W

FEB. 1982 SCALE 1" = 300'

COUNTY SURVEYORS FILE DATA  
DO NOT REMOVE FROM OFFICE



### LEGEND

CORNERS FOUND ●

SET 1 1/4 x 36" I.P. / STAMPED B.C. (P.L.S. 497) O

PROPERTY LINE ESTABLISHED, 1/2" x 60" I.R.'S  
WITH ATTACHED ALUMINUM SIGNS



REGISTERED  
PROFESSIONAL  
LAND SURVEYOR

*Richard J. Hintz*

OREGON  
MAY 13, 1960  
RICHARD J. HINTZ  
497

RICHARD J. HINTZ  
1890 N. 14th ST.  
COOS BAY, OREGON