

SURVEY TO RESET NW'LY & SE'LY PROPERTY CORNERS

IN THE NE 1/4, SEC. 33, T29S, R5N, W.1M.
DOUGLAS COUNTY, OREGON
MAY 13, 1981 SCALE 1" = 50'

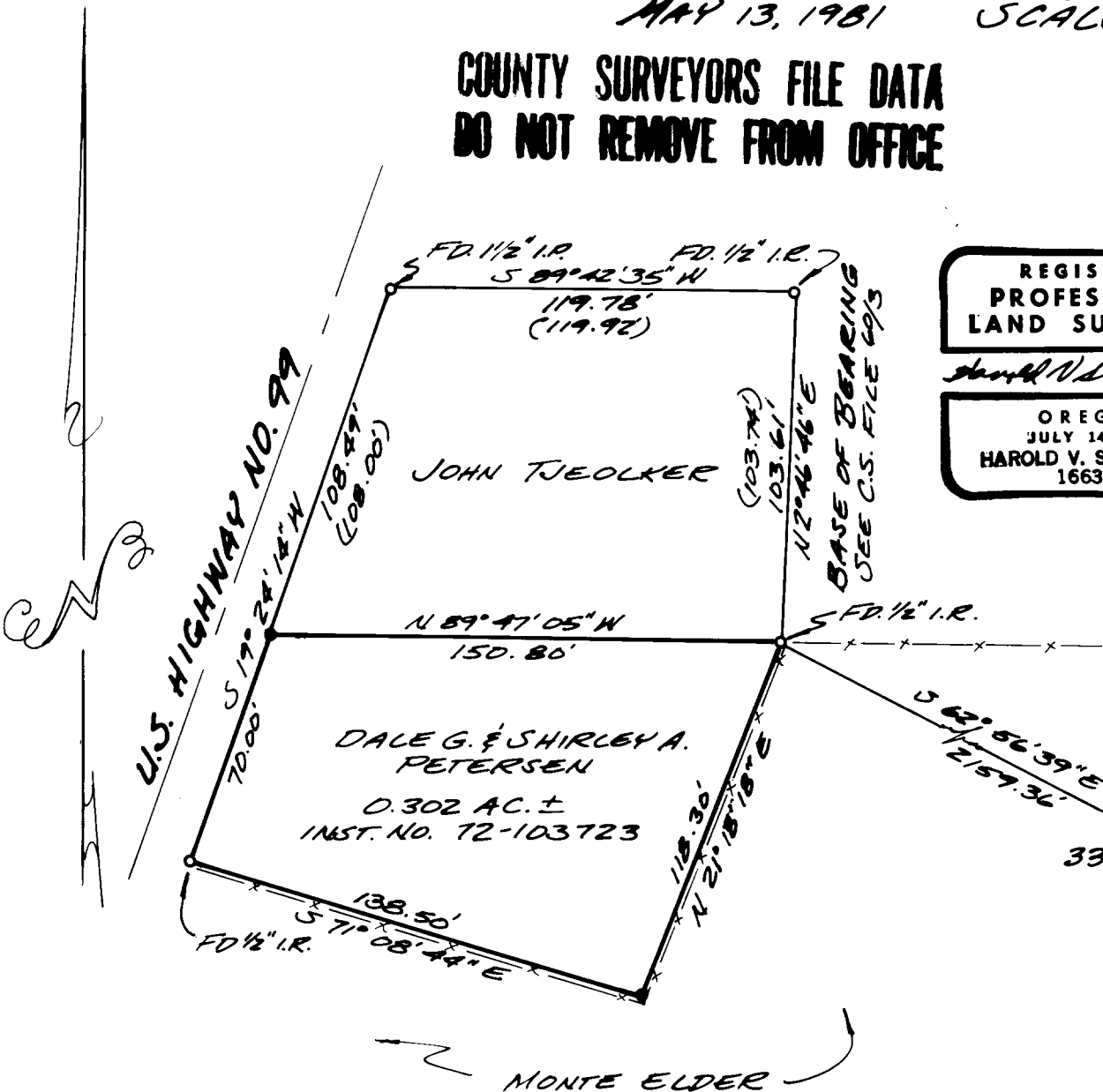
FILED *BS*
RECEIVED *JS*

JUN 5 1981

COUNTY SURVEYOR
DOUGLAS COUNTY, ORE.
BS

**COUNTY SURVEYORS FILE DATA
DO NOT REMOVE FROM OFFICE**

FOR: DALE G. & SHIRLEY A. PETERSEN
BY: HAROLD J. STOCKHOFF L.S. 1663
1074 NE KNOLL
ROSEBURG, OR. 97470



**REGISTERED
PROFESSIONAL
LAND SURVEYOR**

Harold J. Stockhoff

OREGON
JULY 14, 1978
HAROLD V. STOCKHOFF
1663

LEGEND

- FOUND AS NOTED
- SET 3/4" X 24" IRON PIPE
- () RECORD

NARRATIVE

RESET THE NW'LY & SE'LY PROPERTY CORNERS FROM EXISTING FOUND CORNERS AS SHOWN ON THIS MAP. TRAVERSED AND TIED ALL FOUND CORNERS USING A TM20C LIETZ 20 SEC. THEODOLITE AND DM-C2 TOPCON EDM.

REFERENCES

- C.S. FILE 60/30
- C.S. FILE 51/303
- C.S. FILE 51/130