

FILED
RECEIVED *PL*

APR 30 1985

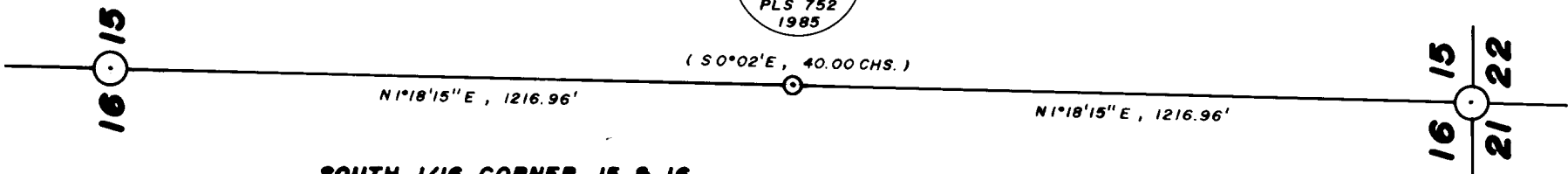
COUNTY SURVEYOR
DOUGLAS COUNTY, ORE.

1/4 CORNER 15 & 16

FOUND: 39"X 28"X 18" (ABOVE GND.) STONE MKD "+"
30" BURNT & ROTTED FIR STUB, N77W, 13.1' (TO FACE)
(SCRIBING VISIBLE - 1/4 S)
ROTTED FIR STUB (WSTLY 2/3 BROKEN OFF AND MISSING), S71E, 33'±
SET: AT CORNER POINT, DRILLED HOLE AND CEMENTED IN BRASS CAP
19" FIR, S28-1/2 E, 23.2' - SCRIBED 1/4 S15 BT
22" FIR, S88-1/2 W, 20.2' - SCRIBED 1/4 S16 BT



T22S RIOW
1/4
S16 | S15
PLS 752
1985



SOUTH 1/16 CORNER 15 & 16

SET: 1-1/2" X 36" IRON PIPE WITH BRASS CAP
23" FIR, S38 E, 18.2' - SCRIBED S 1/16 S15 BT
27" FIR, S37 W, 15.1' - SCRIBED S 1/16 S16 BT

T22S RIOW
S1/16
S16 | S15
PLS 752
1985

SECTION CORNER 15, 16, 21, 22

FOUND: 2" IRON PIPE WITH G.L.O. BRASS CAP "1936"
42" FIR, S84-1/2 E, 107.3' (CLOSED FACE)
35" FIR, S54 W, 43.8' (CLOSED FACE)
ROCK BLUFF, S89-3/4 W, 43.4' - MKD. "+" B O"
(BRG. & DIST. TO THE "+") 16

T22S RIOW
S16 | S15
S21 | S22
1936

- NARRATIVE -

THIS SURVEY WAS MADE IN APRIL, 1985 BY DONALD L. PEEL OF PEEL BAKER LAND SURVEYING INC., 1262 LAWRENCE STREET, EUGENE, OREGON. THE PURPOSE OF THIS SURVEY WAS TO ESTABLISH THE SOUTH 1/16 CORNER BETWEEN SECTIONS 15 AND 16, T22S, R10W, W.M. A KERN K1M THEODOLITE AND DM 502 E.D.M. WERE USED TO PERFORM THIS SURVEY. A CLOSED RANDOM TRAVERSE WAS RUN BETWEEN FOUND CORNERS (SECTION CORNER 15, 16, 21, 22 AND 1/4 CORNER 15 & 16) FOR CONTROL. BEARINGS WERE BASED ON A SOLAR OBSERVATION. THE SOUTH 1/16 CORNER WAS SET AT THE MIDPOINT BETWEEN THE SECTION CORNER AND THE 1/4 CORNER AND WAS MONUMENTED AS SHOWN ON THIS PLAT.

BASIS OF BEARING: SOLAR OBSERVATION
SCALE: 1" = 300'

- CORNERS FOUND
- ⊙ CORNER SET THIS SURVEY
- () G.L.O. RECORD BEARING AND DISTANCE

**COUNTY SURVEYORS FILE DATA
DO NOT REMOVE FROM OFFICE**

REGISTERED
PROFESSIONAL
LAND SURVEYOR

Donald L. Peel

PEEL
DONALD L. PEEL

**SURVEY IN
S.E. 1/4 SEC. 16, T22S, R10W, W.M.
DOUGLAS COUNTY, OREGON**

FOR
GARY WAGGONER
BY
PEEL BAKER LAND SURVEYING INC.
APRIL 22, 1985

COUNTY SURVEYORS FILE DATA
DO NOT REMOVE FROM OFFICE

FILED
RECEIVED *JL*

OREGON CORNER RESTORATION FORM

APR 30 1985

Section S¹/₁₆ 14¹/₁₅ Township 22S Range 10W

COUNTY SURVEYOR
DOUGLAS COUNTY, ORE.

County DOUGLAS Date 4/26/85

Corner Designation

Condition Report Only
 Not Found
 Renewed
 Unrecorded
 Surveyed In
 Referenced Out

Previous Renewals/Surveys, etc. _____

Monument(s) & Accessories Found: (Condition and Source)

Monument Detail

Sketch

Monument Set (Procedures and Description)

SET 1 1/2" X 36" IRON PIPE WITH BRASS CAP
- SET AT MIDPOINT BETWEEN SEC COR 15, 16, 21, 22 & 1/4 COR 16, 15
- THEODOLITE & EDM CLOSED TRAV.

New Accessories

23" FIR, S38E, 18.2 FT. - SCRIBED S¹/₁₆ S¹⁵/₁₅ BT - CENTER MEASURE TO 20D NAIL IN
27" FIR, S37W, 15.1 FT. - SCRIBED S¹/₁₆ S¹⁶/₁₆ BT - SIDE OF TREE

Location & Comments

Surveyor's Seal

UPPER END OF Compass Declination _____
HOUSMANN'S PASTURE Firm/Agency PEEL BAKER
TO DRAW - NORTHERLY LAND SURVEYING INC.
UP DRAW APPROX. Address 1262 LAWRENCE
400 FT. - EAST UP EUGENE, OR. 97401
STEEP SIDE HILL Party Chief D.L. PEEL
APPROX 330' TO Notes _____
CORNER Witness DARYL STANLEY
GARY WAGGONER
MIKE HENNICK

REGISTERED
PROFESSIONAL
LAND SURVEYOR

DONALD L. PEEL
1982

C.S. File No. 58/256-2b

COUNTY SURVEYORS FILE DATA
DO NOT REMOVE FROM OFFICE

FILED
RECEIVED *z*
APR 30 1985

OREGON CORNER RESTORATION FORM

Section 1/4 16/15 Township 22S Range 10W
County DOUGLAS Date 4/26/85

COUNTY SURVEYOR
DOUGLAS COUNTY, ORE.

Corner Designation

- Condition Report Only
- Not Found
- Renewed
- Unrecorded
- Surveyed In
- Referenced Out

Previous Renewals/Surveys, etc. _____

Monument(s) & Accessories Found: (Condition and Source)

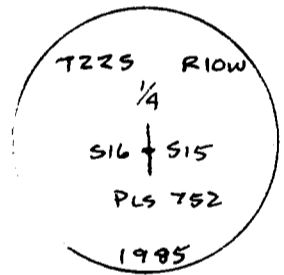
39" X 28" X 18" (ABOVE GND) STONE MKD "+"

30" ROTTED & BURNT FIR STUB, N 77W, 13.1' (TO FACE)
SCRIBING VISIBLE (AT EYE HEIGHT) " 1/4 S"

A ROTTED FIR STUB (WESTERLY 2/3 BROKEN OFF & MISSING) 5716)
35.2' TO WHAT'S LEFT OF TREE 33 FT

Monument Detail

Sketch



Monument Set (Procedures and Description)

AT CORNER POINT, DRILLED A HOLE IN THE ROCK
AND CEMENTED IN A 2 1/2" BRASS CAP

New Accessories

19" FIR, S 28 1/2 E, 23.2 FT - SCRIBED 1/4 S 15 BT

22" FIR, S 88 1/2 W, 20.2 FT. - SCRIBED 1/4 S 16 BT

Location & Comments

Surveyor's Seal

CORNER LIES 30 TO 40' Compass Declination _____
EAST OF DRAW, 1750 Firm/Agency PEEL BAKER
ET. ± NORTHERLY UP LAND SURVEYING INC.
DRAW. BEEN THE Address 1262 LAWRENCE
DRAW EMPTYS INTO EUGENE, OR 97401
UPPER END OF Party Chief D.L. PEEL
HOUSMANN'S PASTURE Notes _____
Witness DARYL STANLEY
MIKE HENNICK

X

#93X

C.S. File No. 58/256-200

**COUNTY SURVEYORS FILE DATA
DO NOT REMOVE FROM OFFICE**

FILED
RECEIVED *vh*

APR 30 1985

OREGON CORNER RESTORATION FORM #

Section 16 | 15 / 21 | 22 Township 22S Range 10W

County DOUGLAS Date 4/26/85

COUNTY SURVEYOR
DOUGLAS COUNTY, ORE.

Corner Designation

- Condition Report Only
- Not Found
- Renewed
- Unrecorded
- Surveyed In
- Referenced Out

Previous Renewals/Surveys, etc. _____

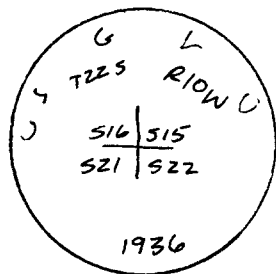
1936 - GLO

Monument(s) & Accessories Found: (Condition and Source)

2" IRON PIPE WITH G.L.O. BRASS CAP DATED 1936
42" FIR, S8A 1/2 E, 107.3 FT. - CLOSED FACE
35" FIR, S5A W, 43.8 FT. - CLOSED FACE
ROCK BLUFF MKD +80 / 16, S89 3/4 W, 43.4 FT. (BRG & DIST TO THE +)

Monument Detail

Sketch



Monument Set (Procedures and Description)

New Accessories

Location & Comments

APPROX 30' SOUTH Compass Declination _____
OF EDGE OF HWY. Firm/Agency PEEL BAKER
LAND SURVEYING INC.
APPROX 1/2 MILE DOWN Address 1262 LAWRENCE
STREAM FROM LOON EUGENE, OR. 97401
LAKE RD. Party Chief D.L. PEEL
 Notes _____
 Witness DARYL STANLEY
GARY WAGGONER
MIKE HENNICK

Surveyor's Seal

