

SURVEY OF W 1/2 NORTH LINE SECTION 29, T25S, R2W, W.M. DOUGLAS COUNTY, OREGON

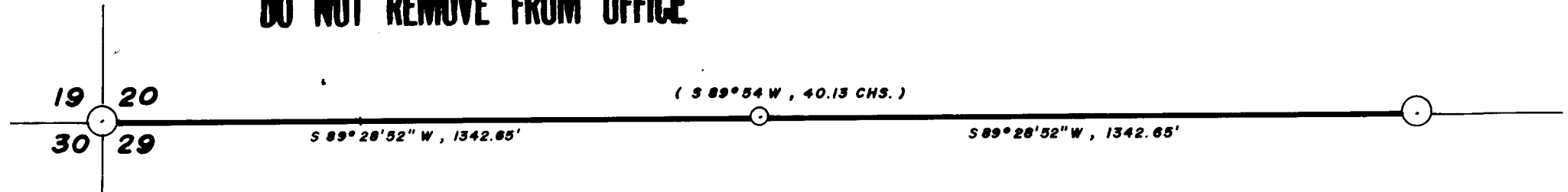
FOR
KENNETH C. TAYLOR
BY
PEEL BAKER LAND SURVEYING INC.
MARCH, 1981

FILED *BS*
RECEIVED *vh*

APR 3 1981

COUNTY SURVEYOR
DOUGLAS COUNTY, ORE.

COUNTY SURVEYORS FILE DATA
DO NOT REMOVE FROM OFFICE






SECTION CORNER 19, 20, 29, 30
FOUND: DOUGLAS COUNTY BRASS CAP
(in mound of stone)
15" FIR, N 5 E, 16.0'
14" CEDAR, S 37 E, 21.4'
37" CEDAR, S 26 W, 20.0'
20" FIR, N 2 W, 28.0'

W. 1/16 CORNER 20 & 29
SET: 1 1/4" X 46" IRON PIPE
7" WHITE FIR, N 25 W, 7.9'
14" WHITE FIR, S 12 W, 16.3

1/4 CORNER 20 & 29
FOUND: U.S.B.L.M. BRASS CAP "1962"
8" FIR, N 48 W, 13.4'
19" FIR SNAG, S 50 E, 34.7'
13" DOWNED FIR, S 9 W, 7.3' (approximately)

BASIS OF BEARING: SOLAR OBSERVATION
SCALE: 1" = 300'

ALL BEARING TREES SCRIBED FOR THIS SURVEY, DISTANCES WERE
CENTER MEASURE AND BEARINGS WERE MAGNETIC, VAR. 20°

-  CORNERS FOUND AND USED FOR CONTROL
-  CORNER SET THIS SURVEY
-  BLAZED AND PAINTED PROPERTY LINE
- () G.L.O. BEARING AND DISTANCE

REGISTERED
PROFESSIONAL
LAND SURVEYOR

Donald L. Peel

OREGON
DONALD L. PEEL
752

NARRATIVE

THIS SURVEY WAS MADE BY DONALD L. PEEL OF PEEL BAKER LAND SURVEYING INC. 1262 LAWRENCE, EUGENE, OREGON, DURING THE MONTH OF MARCH, 1981. A KERN K1ST THEODOLITE, KERN DM502 E.D.M. AND 300' STEEL TAPE WERE USED TO MAKE THIS SURVEY. A RANDOM TRANSIT TRAVERSE, WITH A MINIMUM ERROR OF CLOSURE OF 1'/23,000', WAS RUN FOR CONTROL. BEARINGS WERE BASED ON A SOLAR OBSERVATION. OFFSETS TO THE TRUE LINE WERE COMPUTED AND USED TO DETERMINE THE POSITION OF THE TRUE LINE. THE TRUE LINE WAS MARKED IN THE FIELD WITH NOTCHED BLAZES (painted orange) ON TREES ON BOTH SIDES OF THE TRUE LINE. THE WEST 1/16 CORNER 20 & 29 WAS SET AT THE MIDPOINT BETWEEN SECTION CORNER 19, 20, 29, 30 AND 1/4 CORNER 20 & 29.

58/256-1