

# SURVEY IN S.W. 1/4 SEC. 8, T29S, R7W, W. M.

FOR: KIETH HUSEN

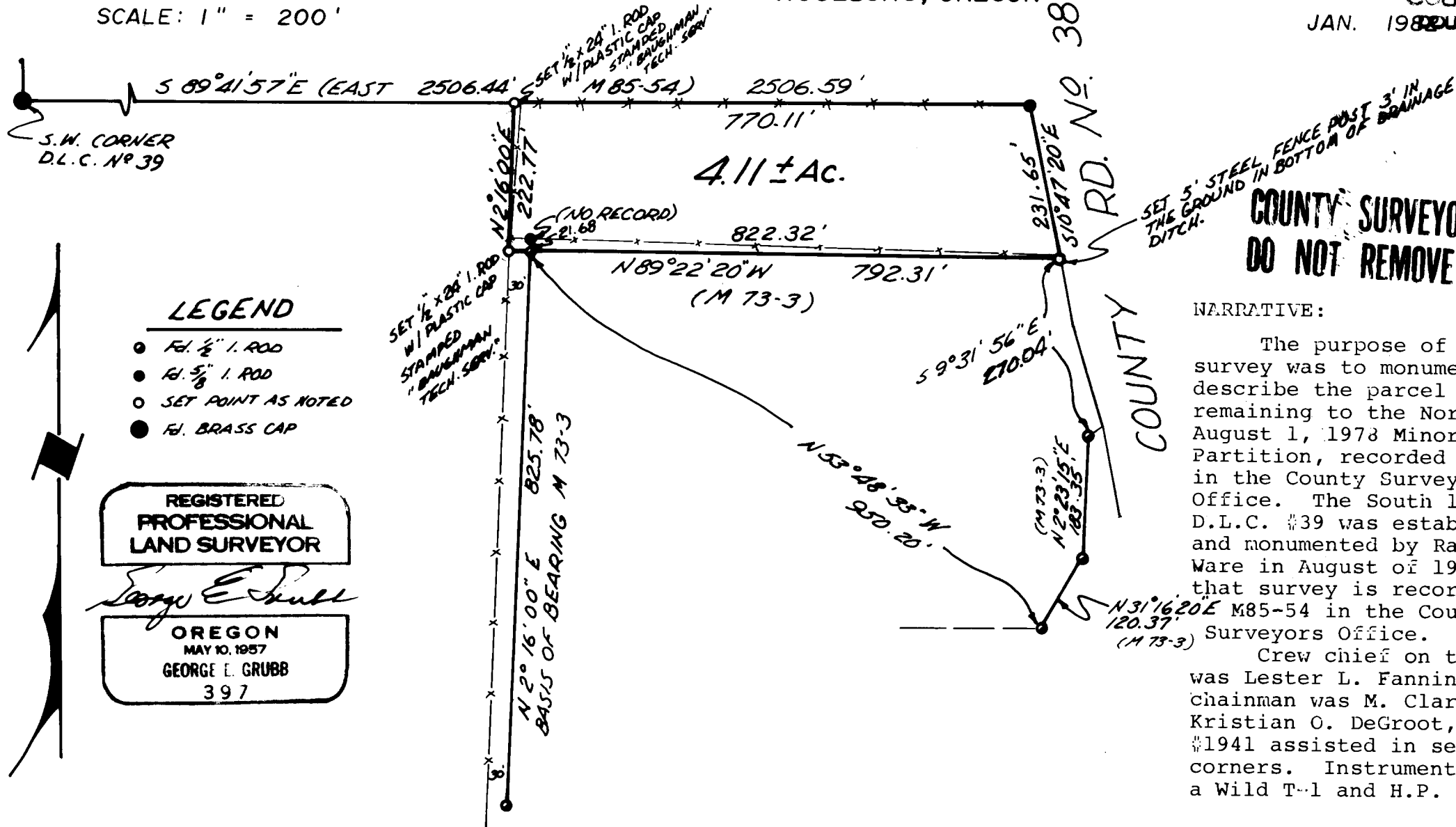
BY: BAUGHMAN TECH. SERV.  
5157 N. UMPQUA HWY.  
ROSEBURG, OREGON

FILED *v*  
RECEIVED *v/L*

JAN 11 1982

SCALE: 1" = 200'

COUNTY SURVEYOR  
JAN. 1982 DOUGLAS COUNTY, ORE



### LEGEND

- Fd. 1/2" x 1. ROD
- Fd. 5/8" x 1. ROD
- SET POINT AS NOTED
- Fd. BRASS CAP

REGISTERED  
PROFESSIONAL  
LAND SURVEYOR

*George E. Grubb*

OREGON  
MAY 10, 1957  
GEORGE E. GRUBB  
397

SET 5' STEEL FENCE POST 3' IN  
THE GROUND IN BOTTOM OF DRAINAGE  
DITCH.

**COUNTY SURVEYORS FILE DATA  
DO NOT REMOVE FROM OFFICE**

### NARRATIVE:

The purpose of this survey was to monument and describe the parcel of land remaining to the North of an August 1, 1978 Minor Land Partition, recorded as M73-3 in the County Surveyors Office. The South line of D.L.C. #39 was established and monumented by Ramanso E. Ware in August of 1980 and that survey is recorded as M85-54 in the County Surveyors Office.

Crew chief on the job was Lester L. Fanning, head chainman was M. Clark. Kristian O. DeGroot, P.L.S. #1941 assisted in setting the corners. Instruments included a Wild T-1 and H.P. 3805.