

REGISTERED
PROFESSIONAL
LAND SURVEYOR

George E. Grobb

OREGON
MAY 10, 1987
GEORGE E. GROBB
897

FILED *BS*
RECEIVED *JH*

MAR 13 1981

COUNTY SURVEYOR *BS*
DOUGLAS COUNTY, ORE. *1117.55'*

SURVEY FOR PARTIAL MORTGAGE RELEASE
A PART OF LOT 68, SUNSHINE ACRES IN
THE S. W. 1/4 OF SECTION 11, T. 27 S.,
R. 5 W., W. M.

FEB. 1981

SCALE 1"=50'

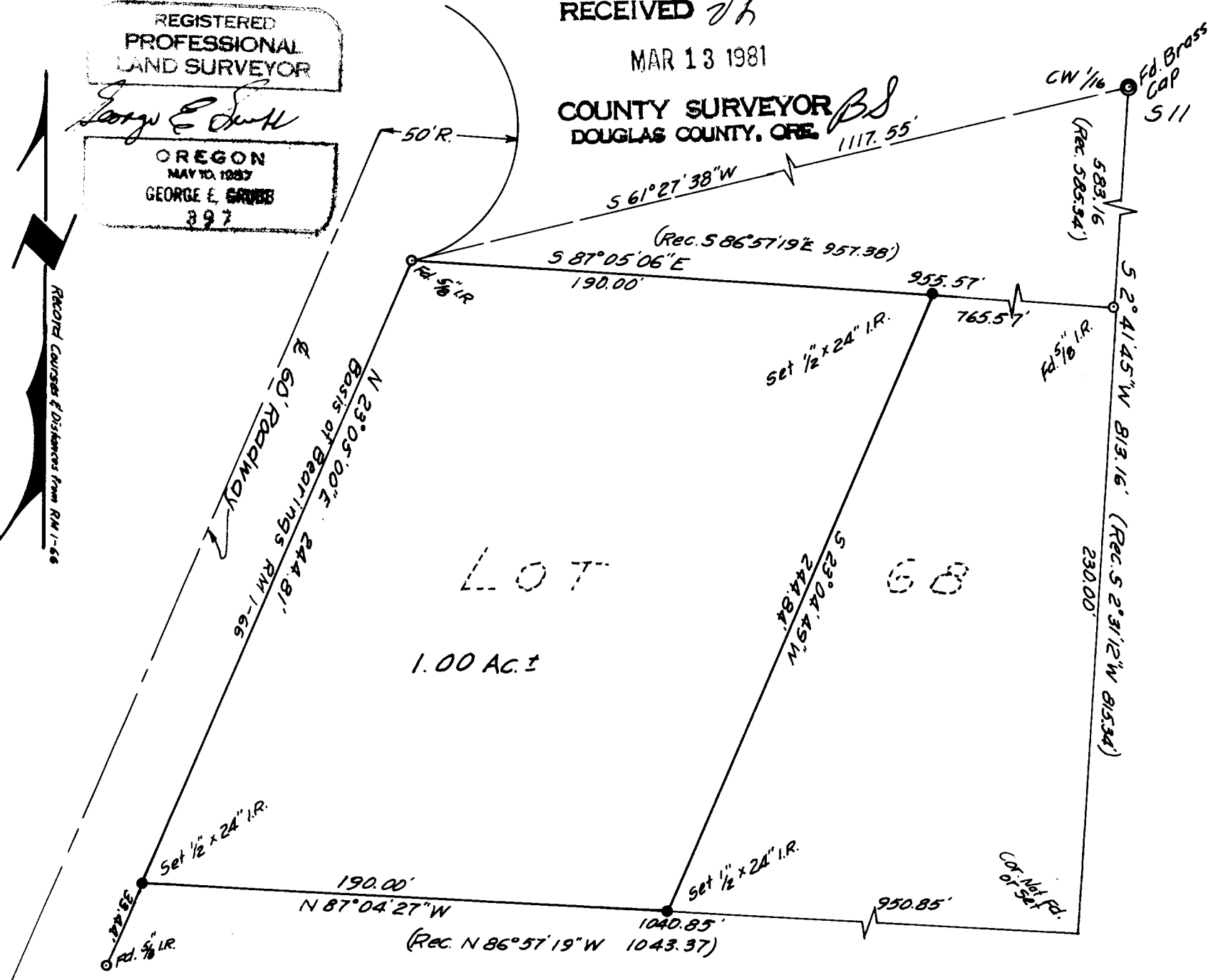
FOR: KEN MELHOFF

BY: BAUGHMAN TECHNICAL SERVICES, INC.
P. O. BOX 222
ROSEBURG, OREGON 97470

COUNTY SURVEYORS FILE DATA
DO NOT REMOVE FROM OFFICE

NARRATIVE:

THE PURPOSE OF THE SURVEY WAS TO
DEFINE AND MONUMENT A PART OF A PARCEL
FOR A PARTIAL MORTGAGE RELEASE. MON-
UMENTS FOUND ON THE WESTERLY BOUNDARY
FORMED THE BASIS OF BEARING. THE
BEARING FOR THE EASTERLY BOUNDARY WAS
ESTABLISHED BY TRAVERSING FROM THE
N. W. CORNER OF THE PARCEL, THROUGH THE
NORTHEAST CORNER OF THE PARCEL TO THE
CW 1/16 CORNER OF SECTION 11. BY HOLD-
ING THE RECORD DISTANCE FOR THE EAST-
ERLY BOUNDARY THE COURSE AND DISTANCE
WAS ESTABLISHED FOR THE SOUTH BOUNDARY.
LESTER FANNING, CHIEF OF PARTY, USED A
WILD T-1 AND 300 FOOT CHAIN.



LOT
68
1.00 AC. ±

C & E No. *58/253-2*