

SURVEY TO SET CORNERS
Lot 5 Block 2 Mulholland Meadows
 in the
SW 1/4 Sec. 12, T. 27S., R. 6 W., W.M.
 March 1981 Scale: 1" = 50'

FILED *BS*
 RECEIVED *VR*

MAR 13 1981

COUNTY SURVEYOR
 DOUGLAS COUNTY, ORE.

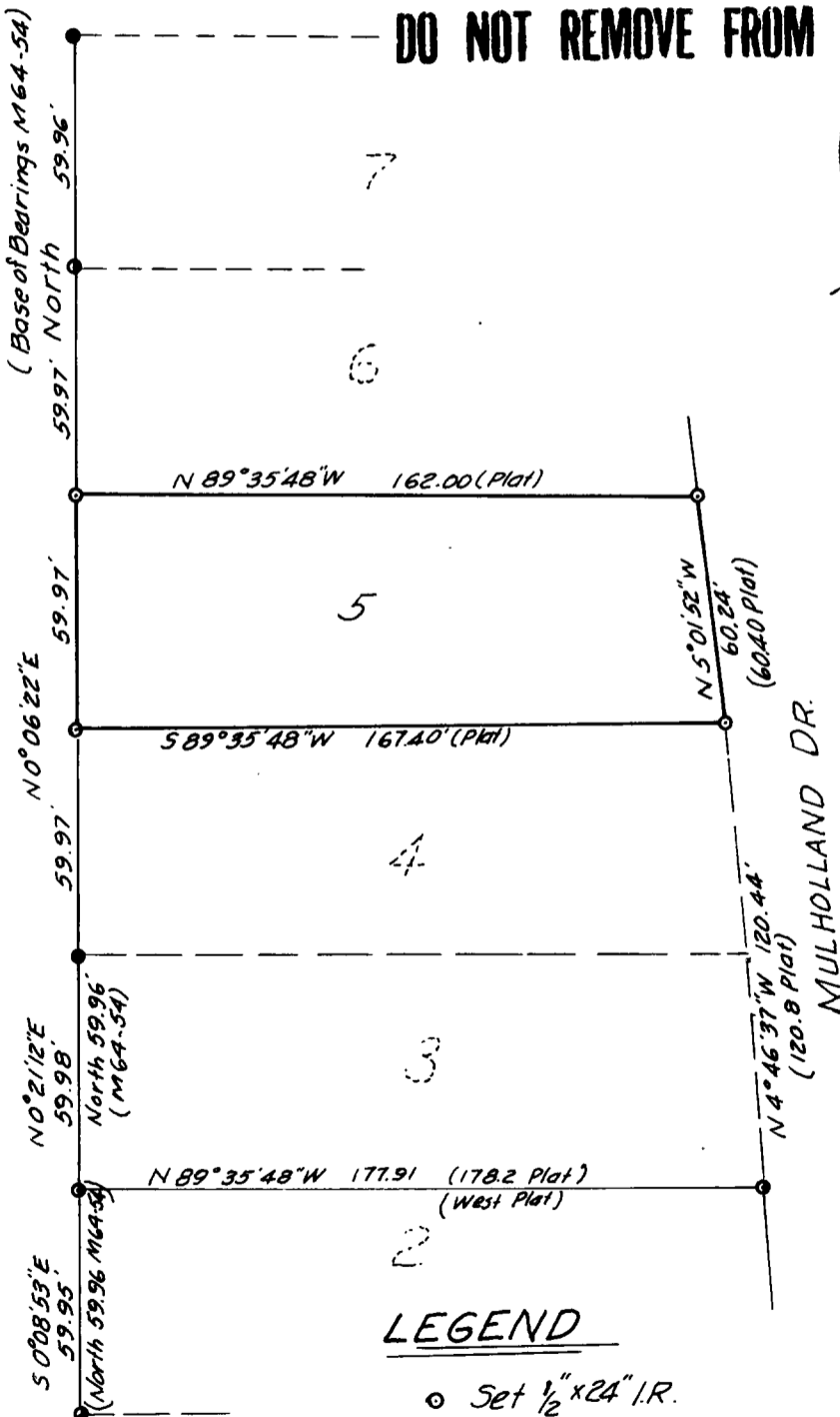
BS

For: *Bob Olson*

By: *Baughman Technical Services*
P.O. Box 222
Roseburg, Or.

Narrative: The survey was performed to establish the corners of Lot 5, Block 2, Mulholland Meadows. Monuments were found on the West side of Lots 2 & 3, and on the West side of Lot 7, as shown on M64-54. Those monuments on Lot 7 were selected as the basis of bearings. Monuments found on the South line of Lot 3 were used to establish the bearings of the North and South boundaries of Lot 5. The dimension for the West side of Lot 5 was prorated based upon those distances shown on M64-54. The Easterly dimension of Lot 5 was established by intersection using the distances shown on the plat for the North and South sides. The work was performed by Lester Fanning, Chief of Party, with a Wild T-1, HP 3805 and 300 foot chain.

COUNTY SURVEYORS FILE DATA
DO NOT REMOVE FROM OFFICE



REGISTERED
 PROFESSIONAL
 LAND SURVEYOR

George E. Grubb

OREGON
 MAY 10, 1957
 GEORGE E. GRUBB
 397

LEGEND

- Set 1/2" x 24" I.R.
- Fd 5/8" I.R.
- Fd 1/2" I.R.

