

**COUNTY SURVEYORS FILE DATA
DO NOT REMOVE FROM OFFICE**

FILED ✓
RECEIVED ✓

OCT 30 1981

COUNTY SURVEYOR
DOUGLAS COUNTY, ORE.

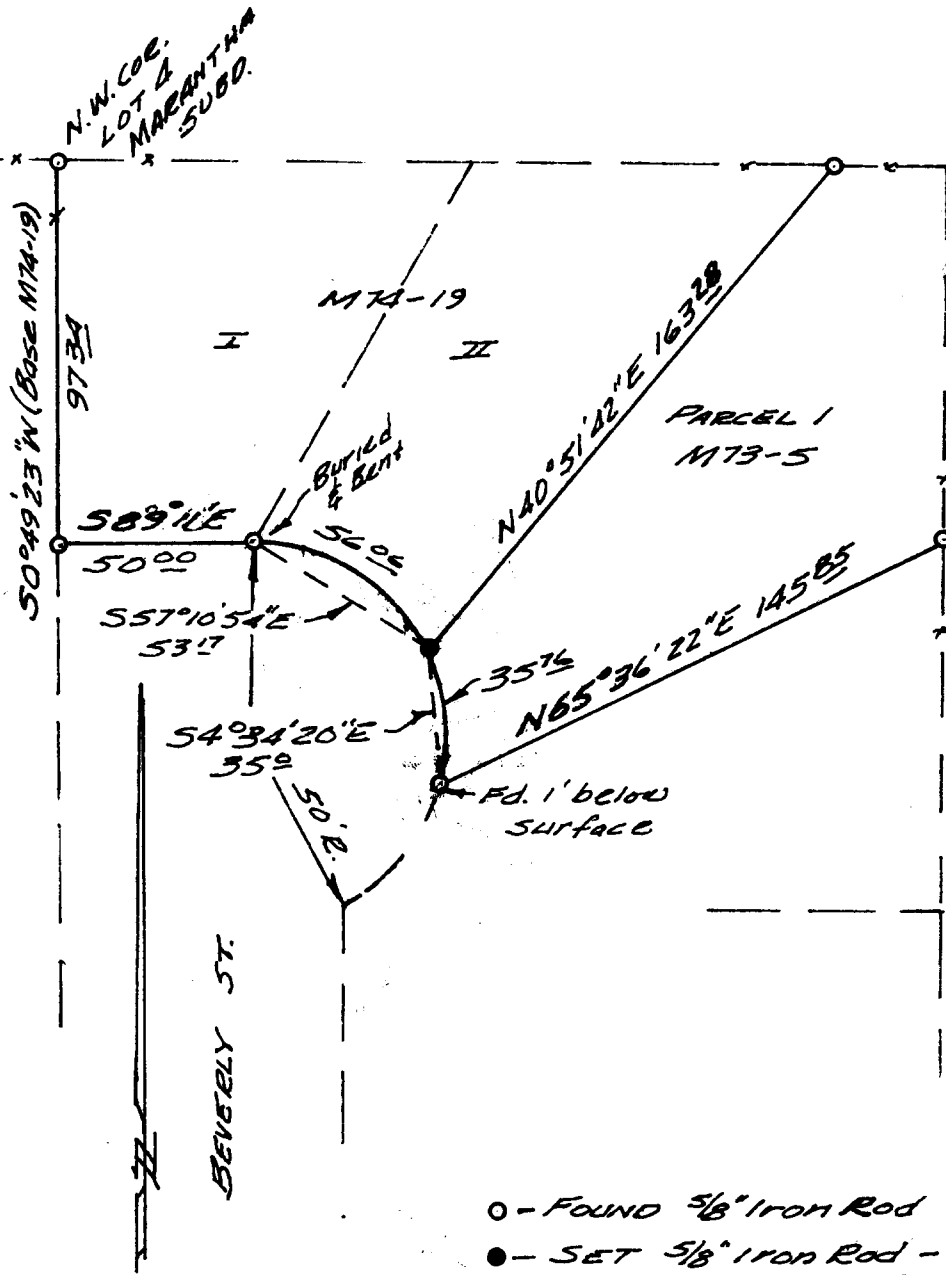
SURVEY TO SET PROPERTY CORNER
IN THE S.W. 1/4 OF SEC. 2, T. 285. R. 6 W. W.M.
PART OF MARANTHA SUBDIVISION
FOR PETE SERAFIN REALTY
by BRUCE ROGERS
2737 N.W. CALKINS, ROSEBURG, OR.
OCT. 29, 1981 1"=50'

NARRATIVE

Purpose of the survey was to locate the corners on the westerly (street) side of Parcel I of a Minor Land Partition filed in C.S. file M73-5.

I started at the N.W. corner of Beverly St and using record bearings and distances, I ran around the cul de sac and found the monuments as shown. Everything checked so close I set the missing corner at record distance.

All work was done with transit & chain.



- - FOUND 5/8" Iron Rod
- - SET 5/8" Iron Rod - 30" long

REGISTERED
OREGON
LAND SURVEYOR

Bruce R. Rogers

JULY 10, 1964
BRUCE R. ROGERS
660

C.S. File No. 58/244-3