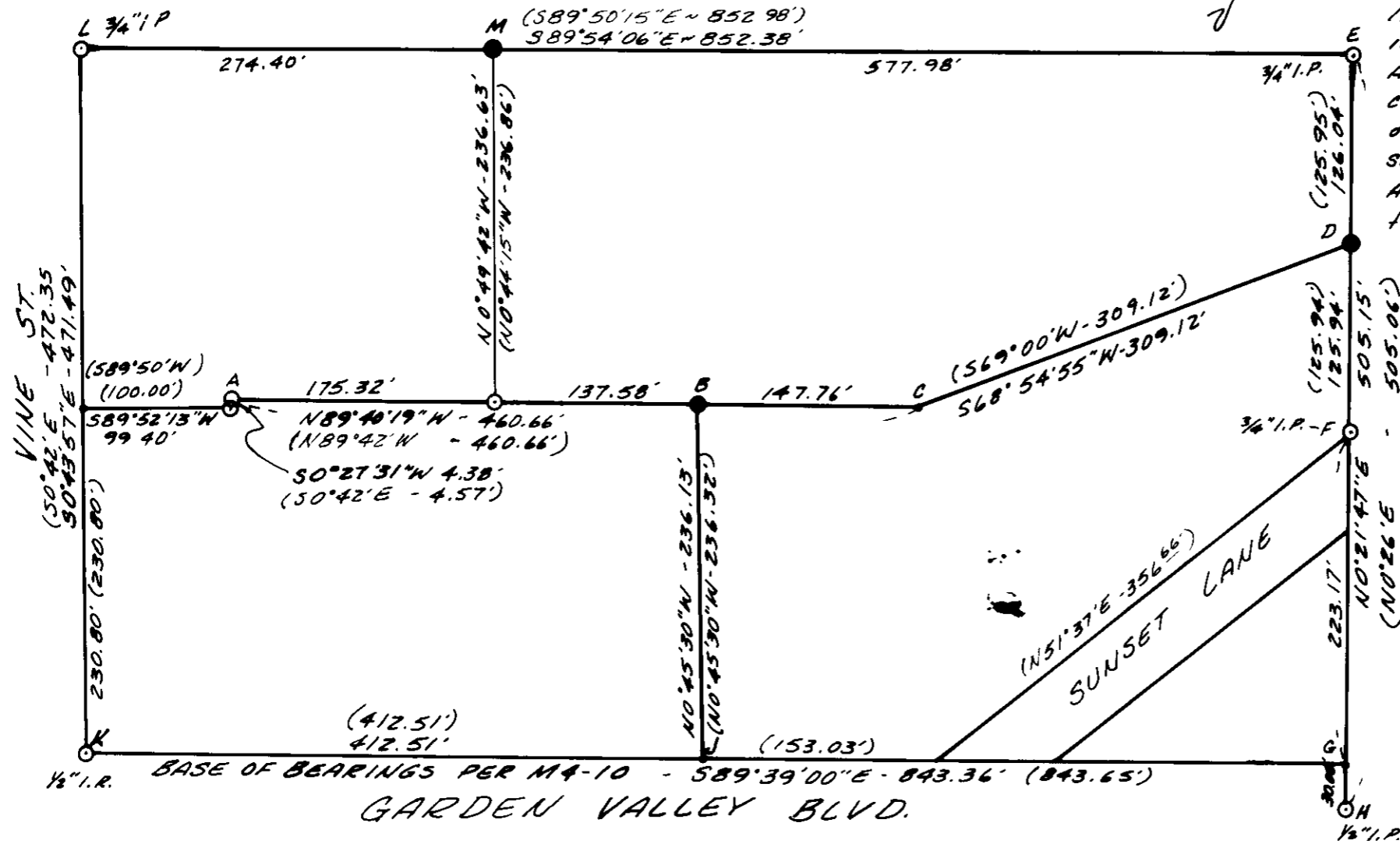


COUNTY SURVEYORS FILE DATA  
DO NOT REMOVE FROM OFFICE

**PROPERTY SURVEY**  
FOR R.E. NOAH & C.W. PATTERSON  
LOT 15, FRUITVALE ADDITION  
NW 1/4 SEC. 18, T27S, R5W, N.M. F.F.D.  
SEPTEMBER, 1980 SCALE: 1"=100'

**NARRATIVE**

The purpose of this survey was to establish line AB, and set property corners B, D and M. The land south of ACD has senior rights per deed Inst. #225740. I set D 125.94 feet from F on line EH. I computed C by distance intersection, 460.66 feet from A and 309.12 feet from D. J was computed 412.51 feet from K on computed line BK. B was set N0°45'30"W from J on line AC. M was set on line EL, 577.98 feet from E.



REGISTERED  
PROFESSIONAL  
LAND SURVEYOR

*Roderick B. Kimberling*

OREGON  
JAN 18 1980  
R.D.P.C. SURV. NO. 103

ALPHA & OMEGA ENGINEERS  
1622 N. E. VINE STREET  
ROSEBURG, OR. 97470

**LEGEND**

- Found 3/4" Iron Rod, or as noted
- Set 5/8"x30" Rebar
- Computed Point
- ( ) Record Information