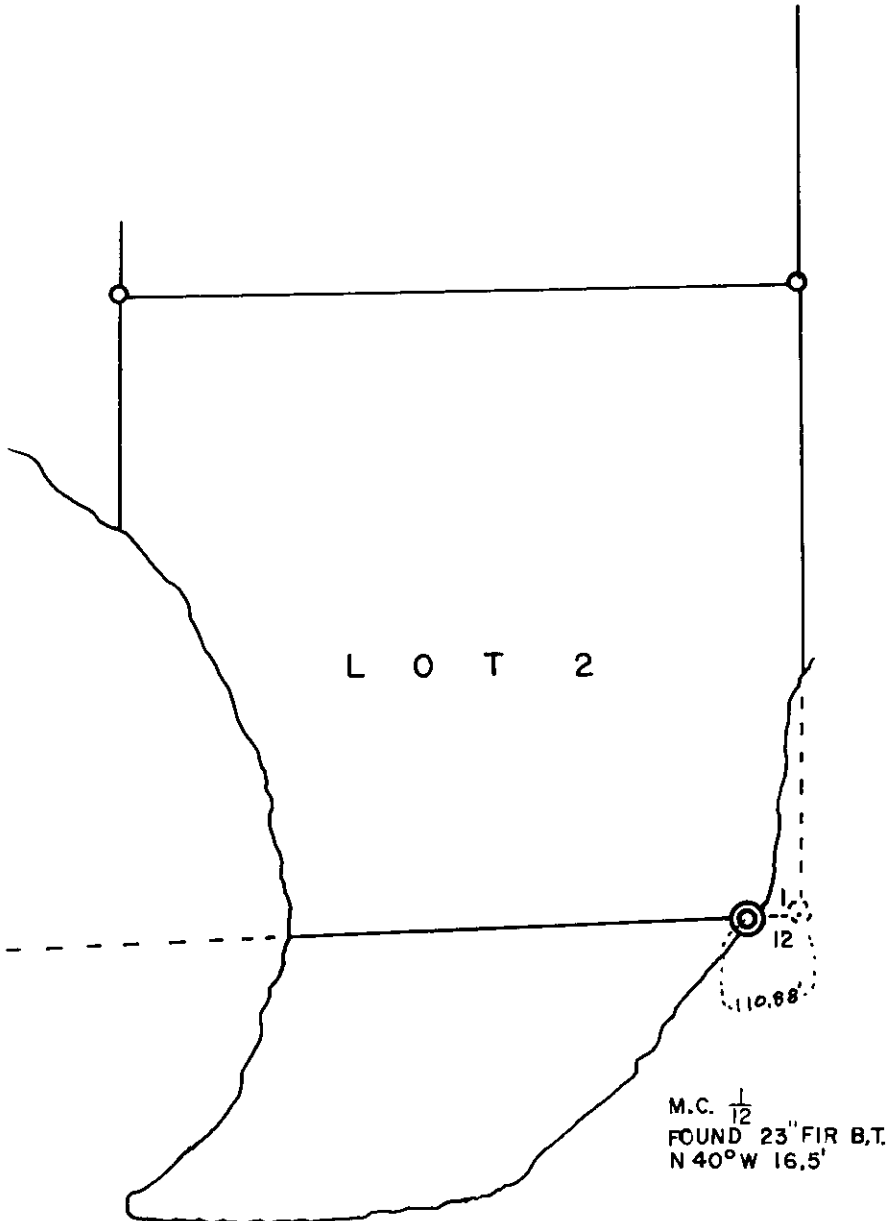


File: M 88-13

SE CORNER SECTION 1, T20S, R12W, W.M.



This is a correction to Douglas County survey {CS 58/238N}
{M88-13}

This correction is to change Survey Map at the Southeast corner of Section 1, T20S, R12W, W.M. The map shows the section corner as a four-way $\frac{116}{127}$ and the corner is actually a two-way corner $\frac{1}{12}$

FILED
RECEIVED ✓
AUG 6 1981
COUNTY SURVEYOR
DOUGLAS COUNTY, ORE.

REGISTERED
PROFESSIONAL
LAND SURVEYOR

Perry G. Fox

OREGON
OCTOBER 20, 1977
PERRY G. FOX
1457

11832 ALDER
MAPLETON, OR. 97453

JULY 30, 1981

C.S. File No. 58/238-2A

M88-13

FILED *v*
RECEIVED *JR*

JUL 14 1981

SURVEY OF SECTION 1, T20S., R12W., W.M.
JUNE 1981

COUNTY SURVEYOR
DOUGLAS COUNTY, ORE.

The purpose of the survey was to establish property corners for Davidson Industries, Inc. The deeds called for subdivision corners and metes and bounds description from a Lot cor.

The government plot shows that parts of the NW quarter, SW quarter and SE quarter fall in the lake. The section has 7 lots, 4 regular forties, 2 oversize forties.

The North 1/4 cor and accessories could not be found. This corner was set by proportional measurement and Brg established by measuring township line between the M.C. between sections 34 and 3 and the Northeast cor of section 1. The South 1/4 corner was set by Douglas County in 1964.

The NW corner and the West 1/4 cor fall in the lake.

The East and West centerline run on a mean bearing of the North line and South section lines.

The North and South line run between the N1/4 corner and the South 1/4 corner.

The West line of the SE 1/4 NW 1/4 run parallel with the N & S center line.

The North line of the SE 1/4 NW 1/4 ran on mean bearing of the North section line and E & W center line.

The North line of Lot 2 ran on a mean bearing of the E & W center line and South section line.

Equipment used a 20 second Franke Theodolite, M.G.A. 76 laser, prisms, and 200' tape.

REGISTERED
PROFESSIONAL
LAND SURVEYOR
Perry G. Fox
OREGON
OCTOBER 28, 1977
PERRY G FOX
1457

11832 ALDER
MAPLETON, OR. 97453