

COUNTY SURVEYORS FILE DATA
DO NOT REMOVE FROM OFFICE

N.W. CORNER SECTION 28

FD. 1953 G.L.O. BRASS CAP

- 22" FIR STUMP, S64°W, 270' (NO MARKS), 1891 B.T.
- 30" FIR STUMP, N38°W, 37.7' (NO MARKS), 1891 B.T.
- 36" FIR STUMP, S68°E, 31.1' (NO MARKS), 1891 B.T.
- 62" FIR, N24°E, 41.8' (NO MARKS), 1891 B.T.
- 15" FIR, S27°E, 32.4' (SCAR VIS.), 1953 B.T.
- 24" FIR, S33°W, 50.8' (SCAR VIS.), 1953 B.T.
- 36" FIR, N02°W, 54.6' (SCAR VIS.), 1953 B.T.
- 62" FIR, N24°E, 41.8' (SCAR VIS.), 1953 B.T.

NORTH 1/4 CORNER SECTION 28

FD. 1953 G.L.O. BRASS CAP

- 30" ALDER, N86°E, 42.9' (NO MARKS), 1891 B.T.
- 72" MAPLE, S70°W, 27.6' (NO MARKS), 1891 B.T.
- 78" FIR, N19°W, 30.8' (BARK SCRIBED), 1953 B.T.

LEGEND

- CORNERS FOUND AND USED FOR CONTROL
- LINES BLAZED AND POSTED THIS SURVEY
- () DATA OF RECORD, 1953 G.L.O. SURVEY
- BASIS OF BEARING, SOLAR OBSERVATION
- DISTANCE TO B.T.'S ARE CENTER MEASURE
- (M.M.) INDICATES LOCATION OF BURIED MAGNETIC MARKERS. MARKERS ARE ORANGE IN COLOR AND ARE BURIED, 12" TO 18" DEEP, BESIDE EACH IRON ROD

SCALE 1" = 400'

LOCATION OF 1/2" IRON RODS			
N1/4 COR.			
N 28-1	145'	WEST	(M.M.)
N 28-2	256'	WEST	(M.M.)
N 28-3	335'	WEST	(M.M.)
N 28-4	475'	WEST	(M.M.)
N 28-5	635'	WEST	(M.M.)
N 28-6	697'	WEST	(M.M.)
N 28-7	780'	WEST	(M.M.)
N 28-8	944'	WEST	(M.M.)
N 28-9	1138'	WEST	(M.M.)
N 28-10	1334'	WEST	(M.M.)
N 28-11	1472'	WEST	(M.M.)
N 28-12	1517'	WEST	(M.M.)
N 28-13	1680'	WEST	(M.M.)
N 28-14	1796'	WEST	(M.M.)
N 28-15	1924'	WEST	(M.M.)
N 28-16	2106'	WEST	(M.M.)
N 28-17	2298'	WEST	(M.M.)
N 28-18	2331'	WEST	(M.M.)
N 28-19	2400'	WEST	(M.M.)
N 28-20	2480'	WEST	(M.M.)
N 28-21	2522'	WEST	(M.M.)
N.W. COR	2601'	WEST	



REGISTERED
 PROFESSIONAL
 LAND SURVEYOR

Lee Roberts
 L. E. ROBERTS
 1984

SURVEY OF W1/2 OF NORTH LINE
SECTION 28, T20S, R9W
FOR
INTERNATIONAL PAPER COMPANY
BY
ROBERTS SURVEYING INC.
29 WEST 29 TH STREET
EUGENE, OREGON 97405
OCTOBER 10, 1984

NARRATIVE

THE PURPOSE OF THIS SURVEY IS TO BLAZE AND POST THE WEST 1/2 OF THE NORTH LINE OF SECTION 28. A CLOSED MEANDER TRANSIT AND E.D.M. TRAVERSE WAS RUN BETWEEN THE NORTH 1/4 CORNER AND THE N.W. SECTION CORNER AND USED FOR CONTROL. A CLOSED MEANDER TRANSIT AND E.D.M. TRAVERSE WAS RUN ALONG THE BLAZED AND POSTED PROPERTY LINE. OFFSETS WERE COMPUTED FROM THIS MEANDER TRAVERSE TO THE TRUE PROPERTY LINE. PROPERTY LINES WERE MARKED WITH RED PAINTED BLAZES, 1/2" x 60" IRON RODS AND RED RIBBON. A WHITE TREE FARN SIGN AND A YELLOW PROPERTY LINE SIGN, WITH P.L.S. NO. 1039 AND DISTANCE TO CORNER STAMPED UPON, IS ATTACHED TO EACH ROD. RODS ARE REFERENCED BY TWO 3" x 3" ALUMINUM TAGS NAILED TO NEARBY TREES TAG NOTES BEARING AND DISTANCE FROM TREE TO IRON ROD.

**COUNTY SURVEYORS FILE DATA
DO NOT REMOVE FROM OFFICE**

FILED
RECEIVED *BS*

OREGON CORNER RESTORATION FORM

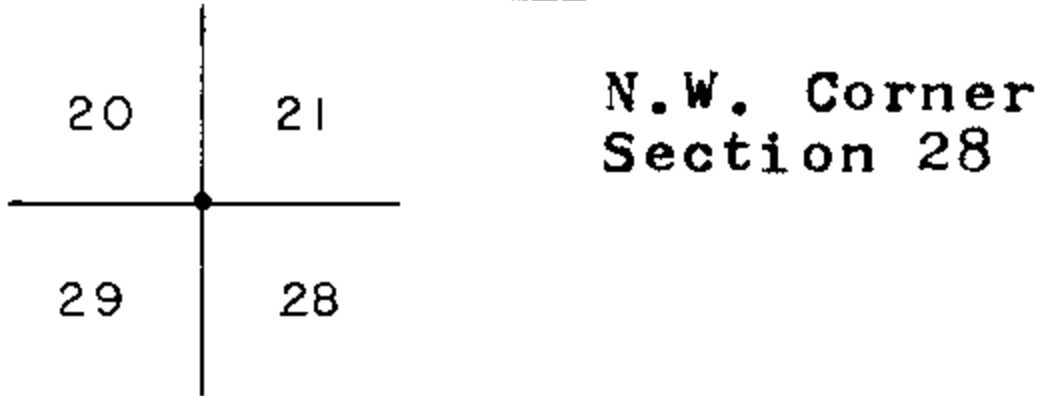
DEC 13 1984

Section 28 Township 20S Range 9W

COUNTY SURVEYOR
DOUGLAS COUNTY, ORE.

County Douglas Date 10-08-84

Corner Designation



N.W. Corner
Section 28

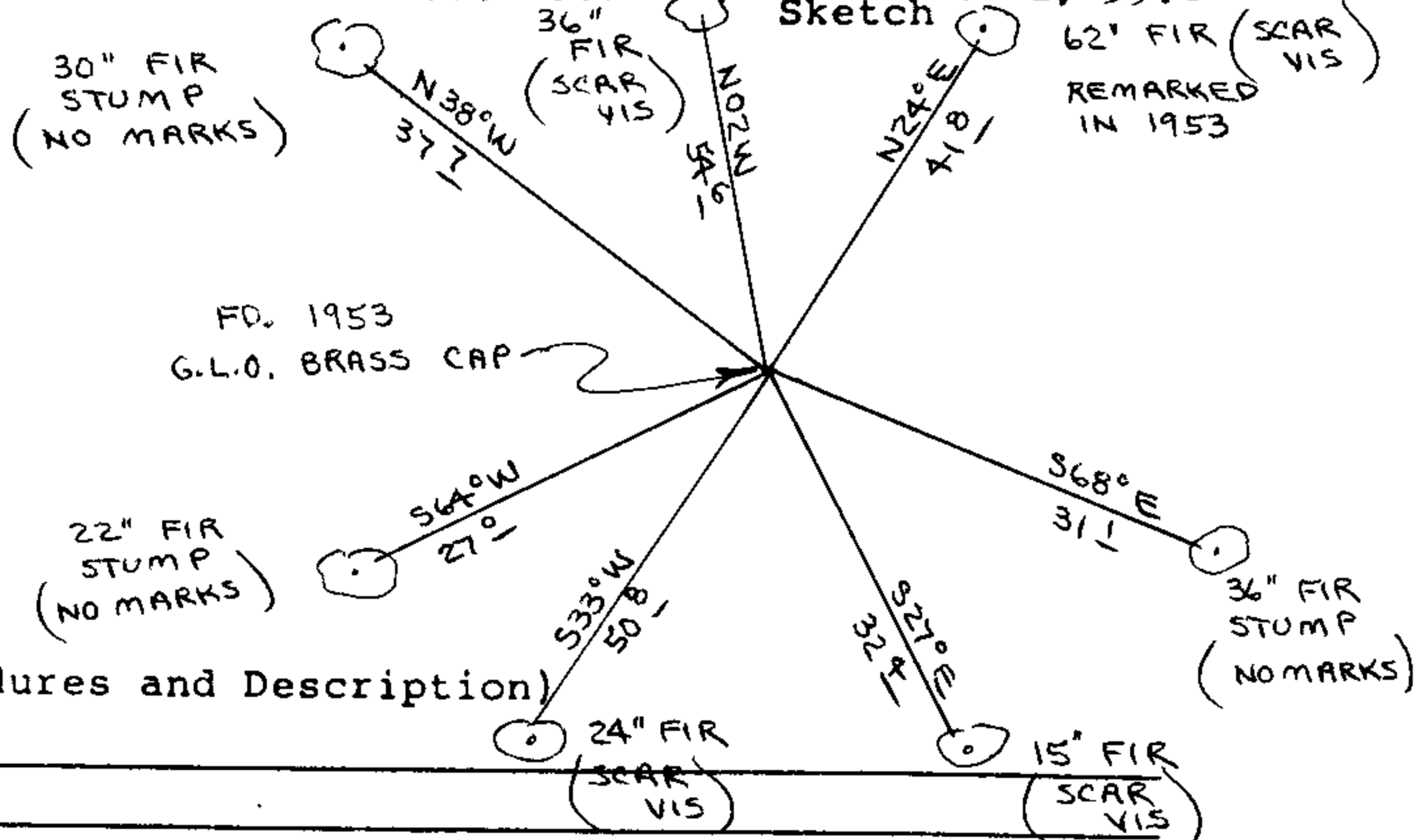
- Condition Report Only
- Not Found
- Renewed
- Unrecorded
- Surveyed In
- Referenced Out

Previous Renewals/Surveys, etc. 1953 G.L.O. Survey and Survey M-90-31 By Roberts Surveying dated 12-10-84

Monument(s) & Accessories Found: (Condition and Source)

- Found 1953 G.L.O. Brass Cap set firmly in ground.
- 22' Fir Stump, S64W, 27.0' (No Marks), 1891 BT, Record S64W, 27.1'
 - 30" Fir Stump, N38W, 37.7' (No Marks), 1891 BT, Record N34½W, 36.3'
 - 36" Fir Stump, S68E, 31.1' (No Marks), 1891 BT, Record S68E, 35.6'
 - 62" Fir, N24E, 41.8' (No Marks), 1891 BT, Record N24E, 39.6'
 - 15" Fir, S27E, 32.4' (Scar Vis.), 1953 BT, Record S27¼E, 31.7'
 - 24" Fir, S33W, 50.8' (Scar Vis.), 1953 BT, Record S31½W, 50.8'
 - 36" Fir, N02W, 54.6' (Scar Vis.), 1953 BT, Record N13¼W, 54.1'
 - 62" Fir, N24E, 41.8' (Scar Vis.), 1953 BT, Record N24E, 39.6'

Monument Detail



Monument Set (Procedures and Description)

New Accessories

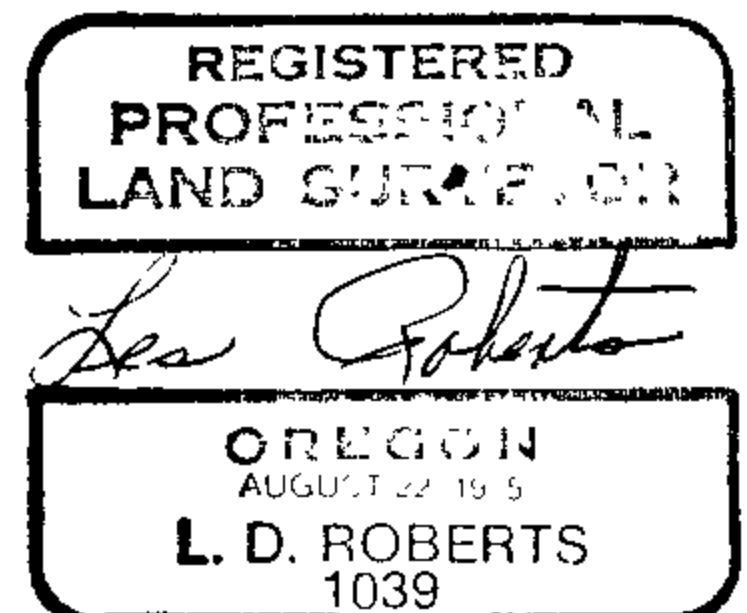
Set metal fence post next to brass cap. Wired land survey monument sign to fence post.

Location & Comments

Corner lies on N.W. slope about 100' West of ridge.

Compass Declination 20½
Firm/Agency Roberts Surveying Inc.
Address 29 West 29th St. Eugene, Oregon 97405
Party Chief Les Roberts
Notes _____
Witness _____

Surveyor's Seal



C.S. File No. 58/237-2b

**COUNTY SURVEYORS FILE DATA
DO NOT REMOVE FROM OFFICE**

FILED
RECEIVED *BS*

DEC 13 1984

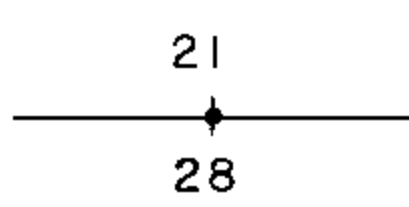
OREGON CORNER RESTORATION FORM

Section 28 Township 20S Range 9W

COUNTY SURVEYOR
DOUGLAS COUNTY, ORE.

County Douglas Date 10-04-84

Corner Designation



North $\frac{1}{4}$ Corner
Section 28

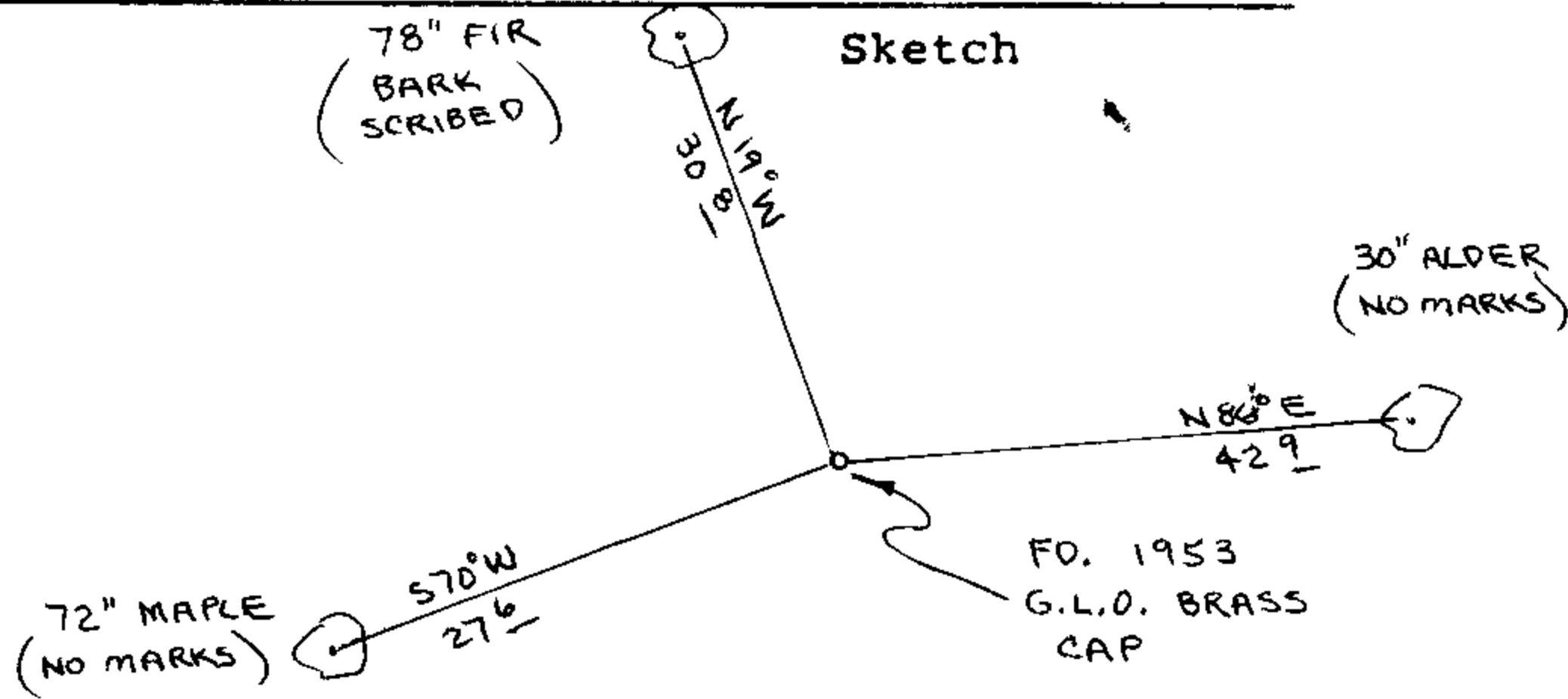
- Condition Report Only
- Not Found
- Renewed
- Unrecorded
- Surveyed In
- Referenced Out

Previous Renewals/Surveys, etc. 1953 G.L.O. Survey and Survey M-90-31 By Roberts Surveying dated 12-10-82

Monument(s) & Accessories Found: (Condition and Source)

Found 1953 G.L.O. Brass Cap set firmly in ground.
30" Alder, N86E, 42.9' (No Marks) , 1891 BT, Record N86 $\frac{1}{2}$ E, 41.6'
72" Maple, S70W, 27.6' (No Marks) , 1891 BT, Record S70W , 33.0'
78" Fir , N19W, 30.8' (Bark Scribed), 1953 BT, Record N 173/4W, 31.0'

Monument Detail



Monument Set (Procedures and Description)

New Accessories

Set metal fence post next to brass cap. Wired land survey monument sign to fence post.

Location & Comments

Corner lies on East slope about 100' West of N-S creek. Compass Declination 20 $\frac{1}{2}$
 Firm/Agency Roberts Surveying Inc.
 Address 29 West 29th St. Eugene, Oregon 97405
 Party Chief Les Roberts
 Notes _____
 Witness _____

Surveyor's Seal

