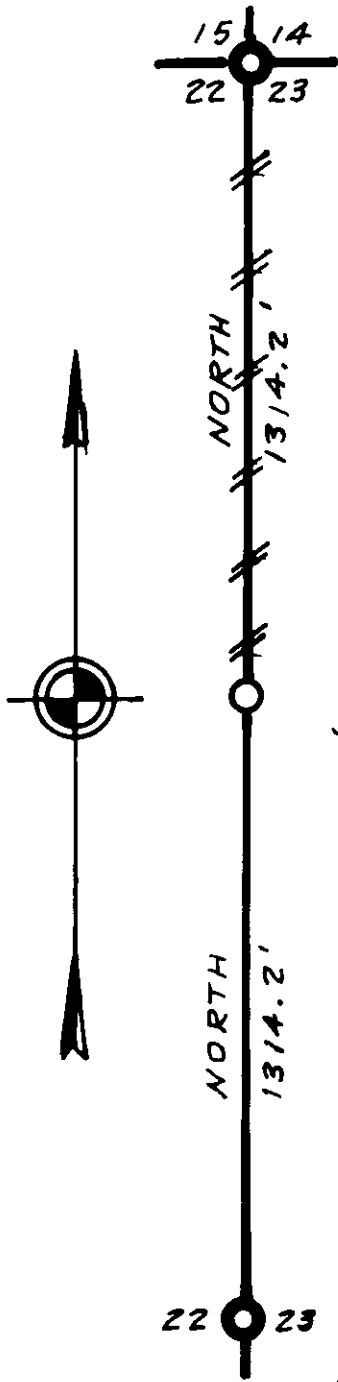


58/237

FILED &
RECEIVED *lh*

JUL 29 1980



N.E. SECTION CORNER
 COUNTY SURVEYOR
 FOUND A 1 1/2" DOUGLAS CO. DOUGLAS COUNTY, ORE
 IRON PIPE WITH BRASS
 CAP - 1967
 20" W. FIR, S50W, 24.1' BT
 16" D FIR, S43 1/2 E, 24.0' BT
 13" D. FIR, N 41 E, 54.8' BT
 17" W. FIR, N 26 W, 40.2' BT

**COUNTY SURVEYORS FILE DATA
DO NOT REMOVE FROM OFFICE**

N 1/16 CORNER
 SET A 1 1/2" IRON PIPE WITH AN I.P. CO.
 BRASS CAP
 28" FIR, EAST, 24.4' SCRIBED BT
 12" MAPLE, N1W, 35.2' SCRIBED BT

LEGEND:
 —//— LINE MARKED WITH 1/2" X 60" IRON RODS AND PROPERTY LINE SIGNS
 BEARING ASSUMED
 DISTANCE TO BEARING TREE IS TO CENTER
 ALL BEARING TREES ARE SCRIBED

EAST 1/4 CORNER
 FOUND A 1 1/2" DOUGLAS CO. IRON PIPE WITH BRASS CAP - 1967
 58" D. FIR, N36W, 22.4' ORIG. BT
 7" D FIR, N24 E, 16.5' BT
 7" D. FIR, S50 E, 13.3' BT
 7" D. FIR, S74W, 54' BT
 6" D FIR, N31W, 83' BT

1262 LAWRENCE
EUGENE, OREGON

A CLOSED TRANSIT TRAVERSE WAS RUN BETWEEN THE SECTION CORNER AND THE 1/4 CORNER WITH A CLOSURE OF 1/9000. THE N 1/16 CORNER WAS SET MID-WAY BETWEEN THE SECTION CORNER AND THE 1/4 CORNER. OFFSETS FROM THE TRAVERSE WERE CALCULATED TO DETERMINE THE TRUE LINE FOR THE NORTH HALF OF THIS LINE. THIS PART OF THE TRUE LINE IS MARKED WITH 1/2" IRON RODS.

REGISTERED
PROFESSIONAL
LAND SURVEYOR

L.D. Roberts

L. D. ROBERTS
1039

SURVEY OF N 1/2 OF EAST LINE
 SEC. 22, T28S, R8W, W.M.
 DOUGLAS COUNTY, OREGON
 FOR
 INTERNATIONAL PAPER COMPANY
 BY
 TRIANGLE ENGINEERING CO.
 SCALE: 1" = 400' MAY 1980

58/237-1