

Explanation, = All distances reckoned in feet followed by the letter "f" except as otherwise shown on the map = Initial corner marked with stones at the intersection of the West-side of street with the North boundary of the Goodell donation with the North boundary of Drain town and at the corners of Lots 20 & 21 = Lots numbered with large figures near the centre Lots (except as otherwise shown on the map) parallel (?) fronting 50 feet on the street Those East of the street parallel to the South boundary of the "Mill Lot" and running back to Pass Creek Those West of the street running back 200 feet parallel to the North boundary of the Goodell Donation, Scale 40 feet to the inch

(This is my interpretation of the writing on the attached document)

*Virginia A. Laugen*

Virginia A. Laugen  
Douglas County Surveyors Office  
July 16, 1980

FILED  
RECEIVED

*VL*

JUL 16 1980

COUNTY SURVEYOR  
DOUGLAS COUNTY, ORE.

C. S. File No. 58/236 A

FILED  
RECEIVED *JL*

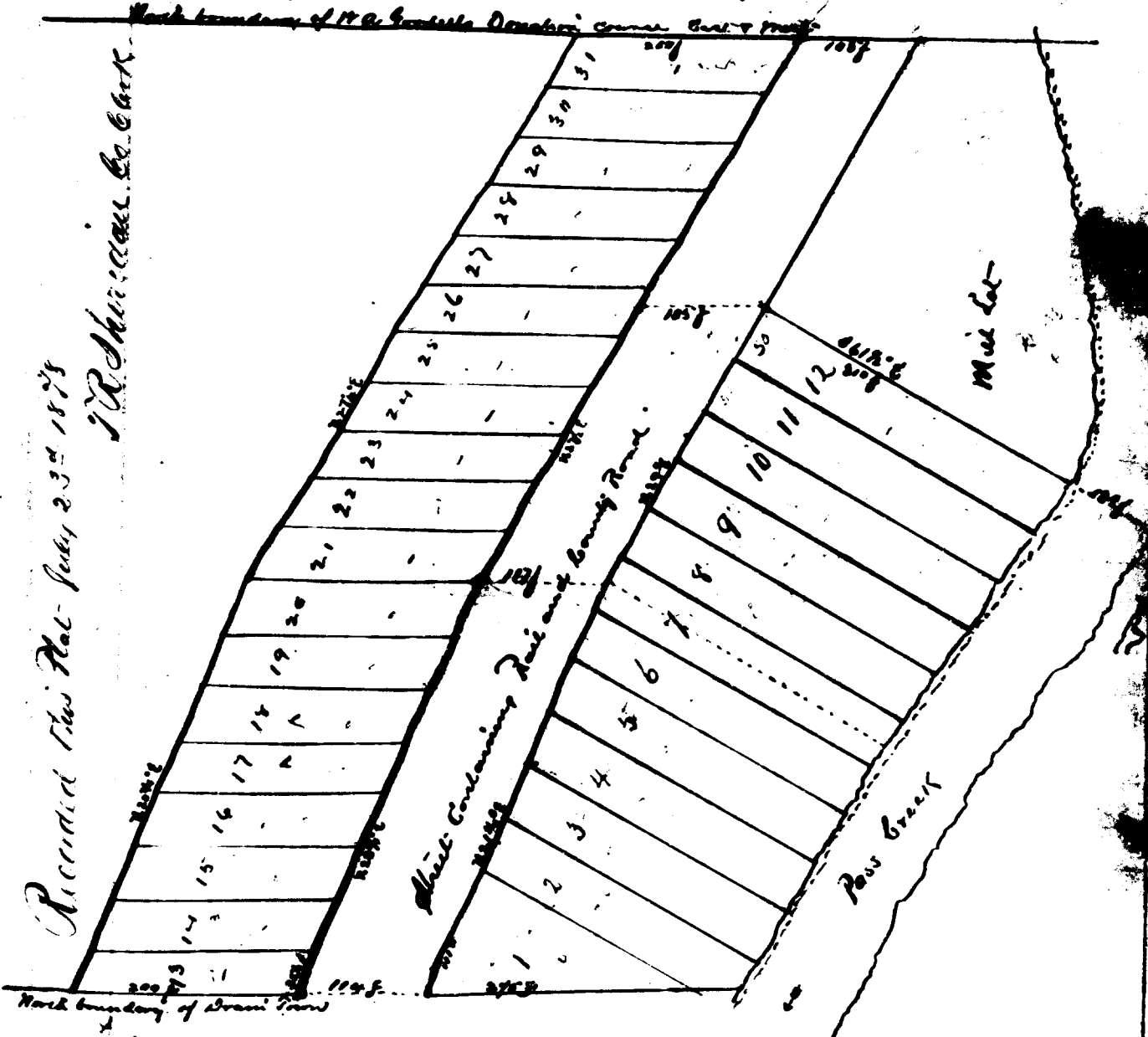
JUL 16 1980

COUNTY SURVEYOR  
DOUGLAS COUNTY, ORE.

*J R Sheridan Co Clerk*

*Recorded July 23<sup>rd</sup> 1878*

# Map of Drains addition to the town of Drain



*Recorded this Plat July 23<sup>rd</sup> 1878*

*J R Sheridan Co Clerk*

**Explanation,** - All distances reckoned in feet followed by the letter "f" except as otherwise shown on the map - Initial corner marked with cross at the intersection of the West side of creek with the North boundary of the Goodell donation and the North boundary of Drain town and at the corner of Lots 20 & 21 - Lots numbered with large figures near the creek (except as otherwise shown on the map) parallelogram pointing 80 feet on the West side of the creek parallel to the East boundary of the "Mud Lot" and running back to Paw Creek. Those west of the creek running back 200 feet from the West boundary of the Goodell donation. Same as first...