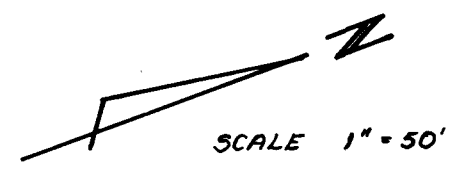


FILED *BS*
RECEIVED *JK*

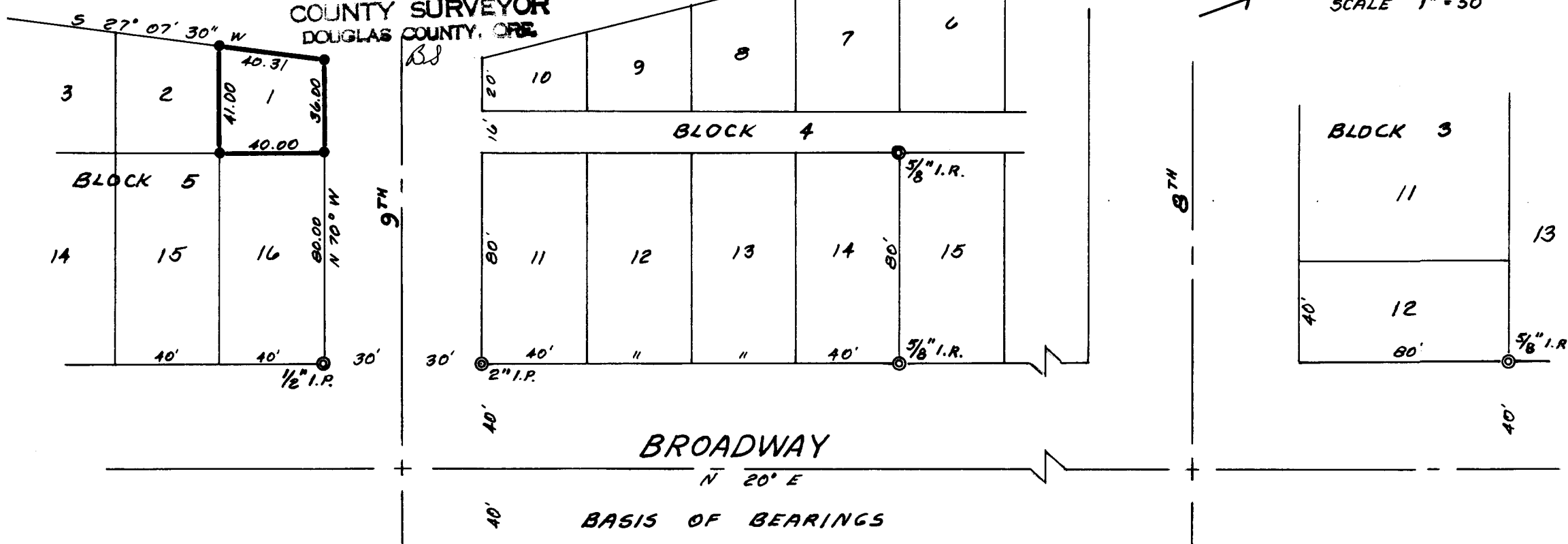
APR 3 1981

COUNTY SURVEYOR
DOUGLAS COUNTY, ORE.

BS



SCALE 1" = 50'



CORNERS FOUND
MONUMENT SET 5/8" I.R. 30"
4183 BRAE BURN DRIVE
EUGENE, OREGON 97405

PROPERTY SURVEY
FOR
L. NAGEL

LOT 1, BLOCK 5 PLAT OF WINCHESTER BAY
IN THE NE 1/4 OF THE SW 1/4 OF SEC. 7, T.22S., R.12W.W.M.
DOUGLAS CO. OREGON FEB. 20, 1981

COUNTY SURVEYORS FILE DATA
DO NOT REMOVE FROM OFFICE

REGISTERED
PROFESSIONAL
LAND SURVEYOR
Mel Avery
OREGON
SEPT. 30, 1977
MEL AVERY
1415

SEE NARRATIVE - SAME FILE -

File No. 58/234 w/ 4
NARR.

C.S. 58/234-4L. NAGLE

COUNTY SURVEYORS FILE DATA
DO NOT REMOVE FROM OFFICE

FILED *BS*
RECEIVED *JR*

APR 3 1981

COUNTY SURVEYOR
DOUGLAS COUNTY, ORE.

NARRATIVE

Property Survey of Lot 1, Block 5, Plat of Winchester Bay

Set over 2" I.P. on S.W. Corner of Lot 11, Block 4; sighted $\frac{5}{8}$ inch I.R. on S.E. Corner of Lot 14, Block 4; plunged transit and checked existing $\frac{1}{2}$ " I.P. on S.E. Corner of Block 5; checked okay.

Turned computed angle to S.E. Cor Lot 1, Block 5; chained calculated distance to said S.E. Corner and set $\frac{5}{8}$ " by 30" I.R.

Set up on S.E. Corner of Lot 1, Block 5; backsighted S.W. Corner of Block 4, turned computed angle to S.E. Corner Block 5 and checked flat. Turned angles to remaining corners of Lot 1, chained distances and set $\frac{5}{8}$ " by 30" I.R. Check chained between all set corners and verified distances as of record. Also check chained distance of record between S.E. Corner of Lot 1 and S.E. Corner of Block 5; distance checked flat.

*A-14-81 BS at G. Surveyor Office:
① S.W. COR of Lot 11, Block 4 should be SE Cor. Lot 11.
② S.E. COR of Lot 14, Block 4 should be NE Cor. Lot 14.*

REGISTERED
PROFESSIONAL
LAND SURVEYOR

Mel Avery

OREGON
SEPT. 30, 1977
MEL AVERY
1415

2-28-81