

**COUNTY SURVEYORS FILE DATA
DO NOT REMOVE FROM OFFICE**

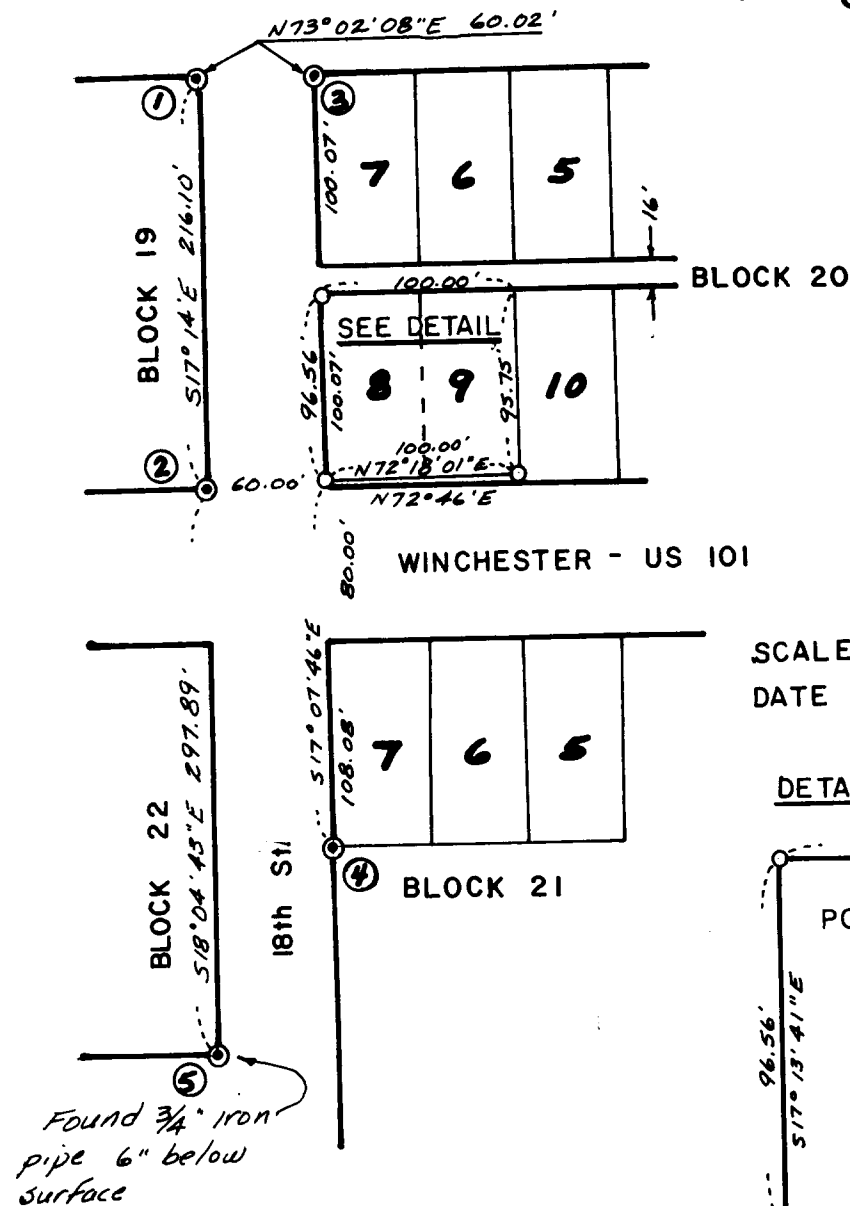
**NE 1/4 NW 1/4 SEC. 3, T22S, R12W, W.M.
Survey Of Portions Lots 8 & 9, Block 20
Reedsport Addition To Reedsport
Douglas County, Oregon**

FILED *BS*
RECEIVED *JL*

APR 10 1981

COUNTY SURVEYOR
DOUGLAS COUNTY, ORE.

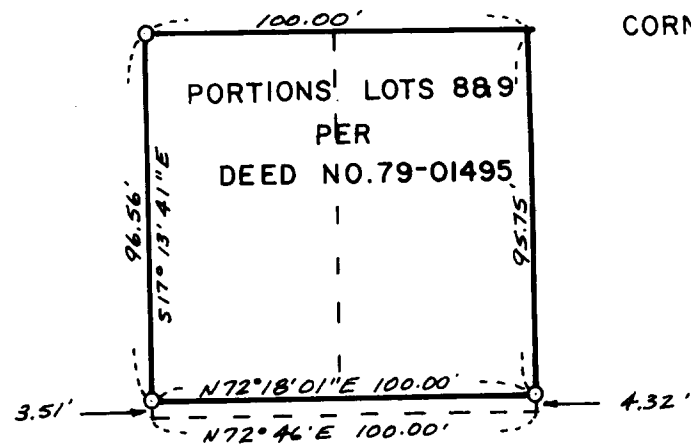
BS



NARRATIVE Basis of bearing was record plat bearing between monuments ① & ②. Mon. ① is a 1/2" iron pipe below surface from which a 2nd 1/2" pipe bears. East 0.12 ft. Mon. ② is a 3/4" pipe driven flush in sidewalk. Monument ③ is a 1/2" iron pipe 8" below surface. Monuments ①, ② & ③ were used for horizontal control and measured distance from monument ③ to ④ was used to proportion distance North-South. Monument ④ is a 5/8" iron rod in retaining wall. The positions of monuments found were held except for monument ⑤ which I consider out of position. Corners set are 5/8" x 30" iron rods. Surveys (previous) tied during this survey are C558/172, C551/263 and C551/243 by Hootman and Luckman. Equipment used: 1 minute theodolite, electronic distance measuring and steel tape.

SCALE 1" = 100'
DATE 4-1-81

DETAIL - SCALE 1" = 50'



LEGEND

- CORNERS FOUND ○
- CORNERS SET ○
- TOM STAMPER
- STAMPERS J & J TIRE CO.
- COOS BAY, OREGON

SURVEY BY

STUNTZNER ENGINEERING & FORESTRY
705 S. 4th - P.O. BOX 118
COOS BAY, OREGON 97420
PH. 267-2872

SURVEY FOR

REGISTERED
PROFESSIONAL
LAND SURVEYOR

Ronald E. Stuntzner

OREGON
JANUARY 23, 1977
RONALD E. STUNTZNER
1242