

Map Of Survey - Honn To Johnson In Portions  
SE 1/4 Section 36, T. 22 S., R. 13 W., W. M., Douglas Co.  
Oregon

FILED *dp*  
RECEIVED *dh*

MAY 1 1980

COUNTY SURVEYOR  
DOUGLAS COUNTY, ORE.

DO NOT REMOVE FROM OFFICE

Found Original  
3/4" pipe on West  
Bdy. Old Hwy 101  
S 16° 41' 40" W  
1268.12'  
From East  
1/4 CORNER  
Sec. 36



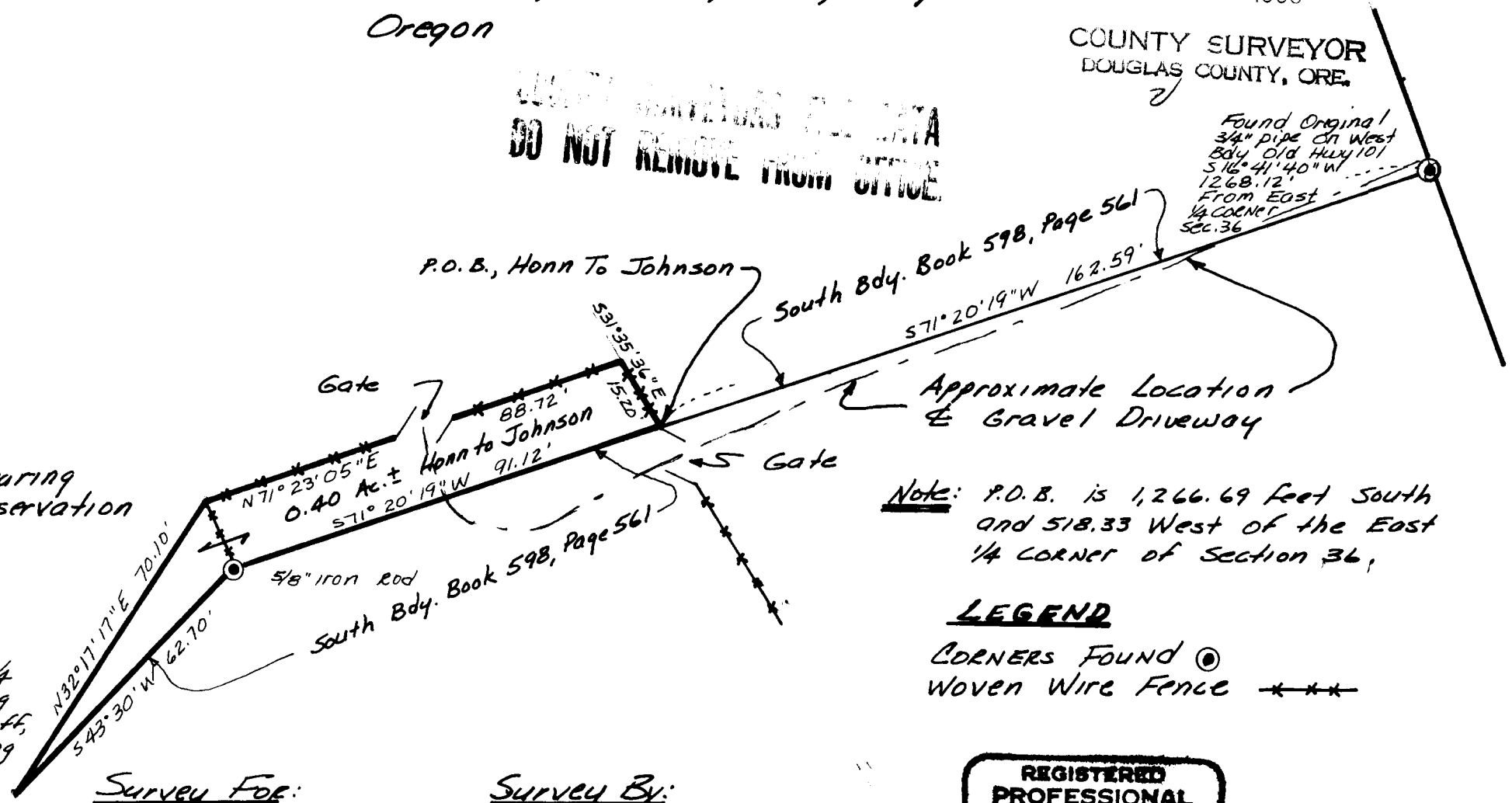
Basis Bearing  
Solar Observation

Date: 10-1-79

Scale: 1" = 30'

Corner Note:

Found 3/4" pipe at East 1/4  
Corner Sec. 36. 10 foot long  
pipe has been broken-off,  
with end pipe remaining  
straight in the ground.  
Set 5/8" iron rod on  
West side of 3/4" pipe.  
Marked "X" ON 20" D.F.  
N 5° E 38.10.



Note: P.O.B. is 1,266.69 feet South  
and 518.33 West of the East  
1/4 CORNER of Section 36,

LEGEND

CORNERS FOUND   
Woven Wire Fence

Survey For:

Elmer & Wanda Honn  
12261 Wildwood Dr.  
North Bend, Ore.

Survey By:

Stuntzner Engineering  
P.O. Box 118  
Coos Bay, Ore.

REGISTERED  
PROFESSIONAL  
LAND SURVEYOR

*Ronald E. Stuntzner*

OREGON  
SEPTEMBER 23, 1977  
RONALD E. STUNTZNER  
1342