

34" inc. cedar  
orig. B.T.



T225 R5W W.M.

1/4 S. 25/36

MARCH 10, 1981

Blazed and Scribed

NEW B.T.

26" Douglas Fir



Fd. B.L.M. BRASS  
C/NP LEADING AGAINST  
B.T.

North  
based on N. 42° W.  
For calls in field notes  
for bearing dist. to  
cedar B.T.

N 42° W  
75.15  
Fd. 5/8" rod

N 59° 49' E  
38.00 FT.  
101° 49'

N 59° 49' E  
38.00 FT.

Set BLM, BRASS C/NP  
Stamped W.P. 17 FT.

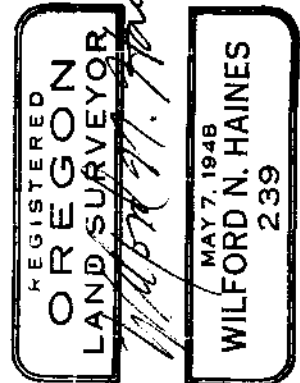
drove 5/8" x 40" rebar  
at orig. point for  
1/4 corner

This point in road about one  
foot from bank

FILED  
RECEIVED

APR 13 1981

COUNTY SURVEYOR  
DOUGLAS COUNTY, ORE.



#164 X

C.S. File No. 58/229-42

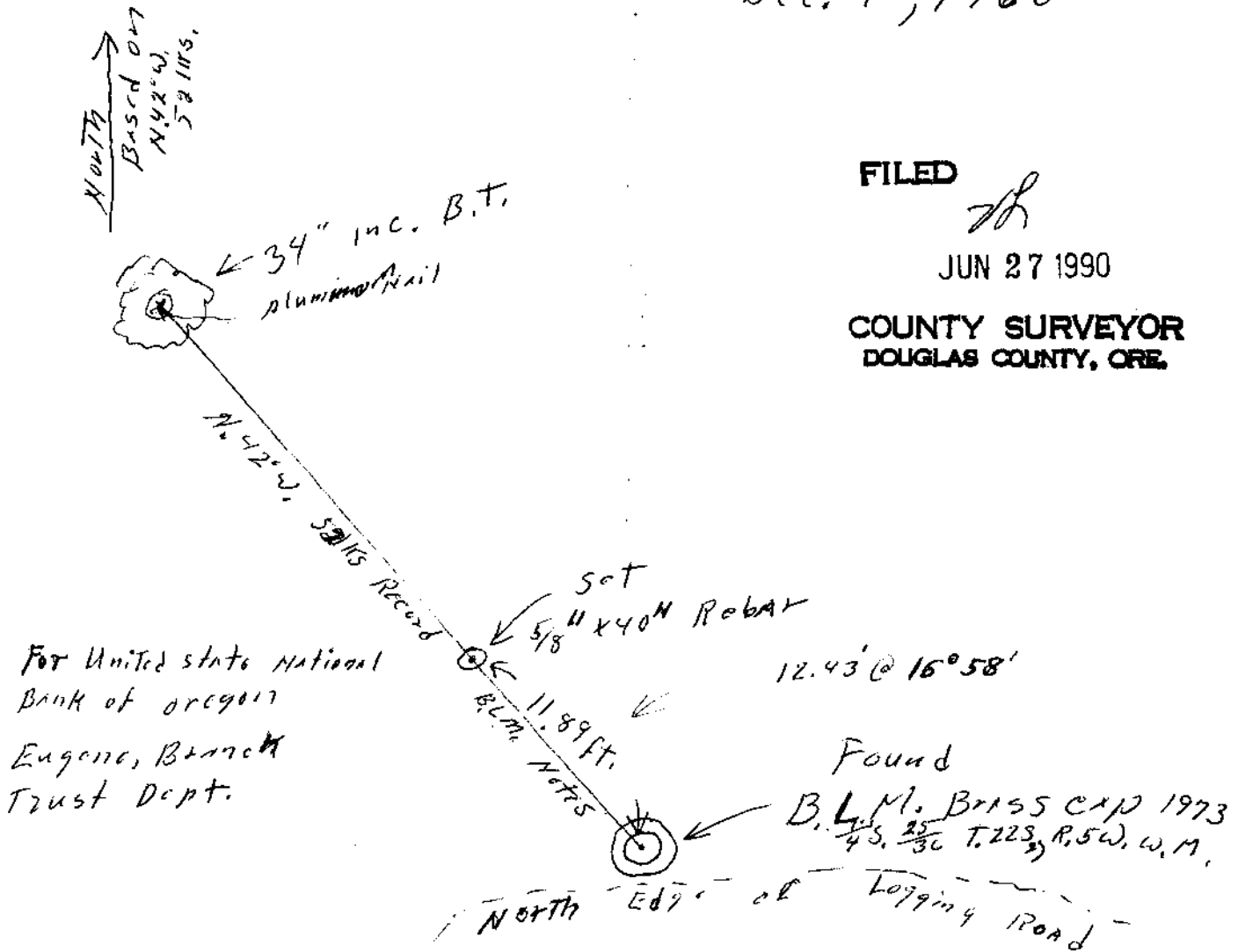
Dec. 4, 1980

FILED

*D.S.*

JUN 27 1990

COUNTY SURVEYOR  
DOUGLAS COUNTY, ORE.



The 4 section corner to Sections 25+36, T. 22S., R. 5W., W.M. is in danger of being disturbed by logging road construction. I therefore drove an aluminum nail in base of cedar B.T. Set transit up on 4 corner Brass cap <sup>sighted</sup> on nail and had a 5/8" x 40" rebar driven in ground at 11.89 ft. from Brass cap and on line to Aluminum nail in B.T. Base

This info. added 6/27/90.  
found in *skinner*  
material. *D.S.*