

M 96-20

FILED
RECEIVED 68

OREGON CORNER RESTORATION FORM

MAR 22 1984

Section 26 Township 20S Range 9W

COUNTY SURVEYOR
DOUGLAS COUNTY, ORE.

County Douglas Date 3-01-84

Corner Designation

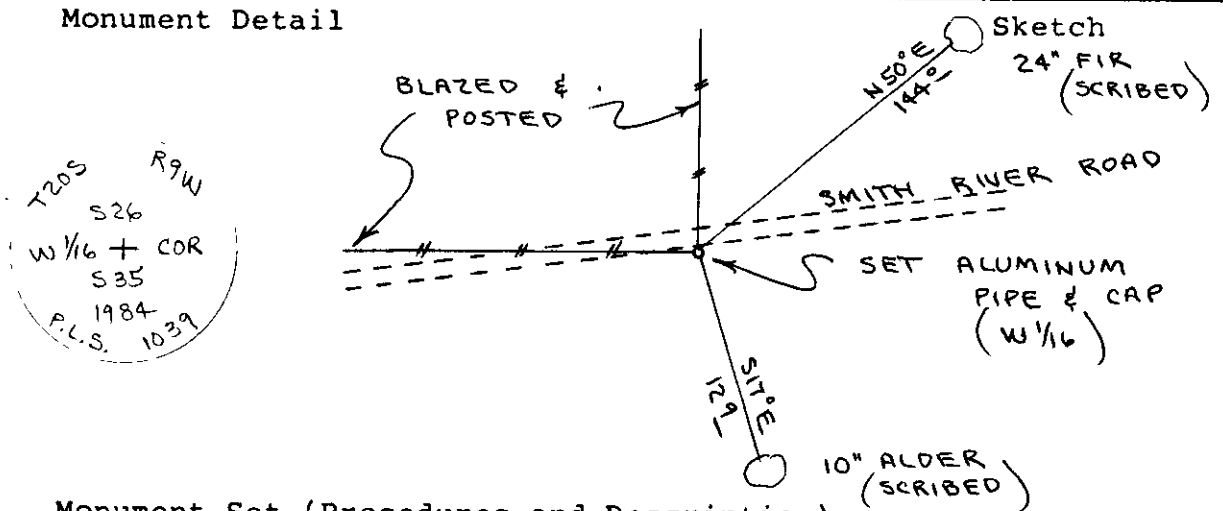
West 1/16
Corner 26
35

- Condition Report Only
- Not Found
- Renewed
- Unrecorded
- Surveyed In
- Referenced Out

Previous Renewals/Surveys, etc. None

Monument(s) & Accessories Found: (Condition and Source)

Monument Detail



Monument Set (Procedures and Description)

Set 2" x 36" Aluminum pipe and cap. Buried purple magnetic marker under 36" pipe. See filed survey for survey procedures.

New Accessories

- 10" Alder, S17E, 12.9' (Barked Scribed/Painted Red/Brass Washer)
- 24" Fir, N50E, 144.0' (Scribed/Painted Red/Brass Washer)
- Set metal fence post with land survey monument sign wired to, beside aluminum pipe.

Location & Comments

Corner lies on South-early gravel shoulder of Smith River Access Road.

Compass Declination 20 1/2

Firm/Agency Roberts Surveying Inc.

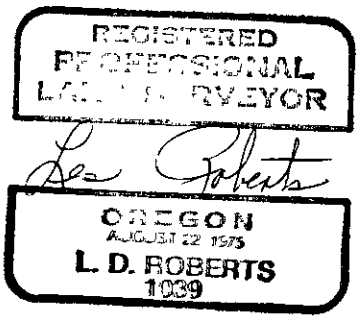
Address 29 West 29th St. Eugene, Oregon 97405

Party Chief Ted Baker

Notes Stu Duce

Witness Buzz Moisan

Surveyor's Seal



ok
Jen