

FILED
RECEIVED *68*

OCT 3 1984

SURVEY IN THE NW 1/4 SECTION 7
T. 32 S. R. 4 W. W.M.

FOR WILLIAM A. & DONNA L. CAVENER

COUNTY SURVEYOR
DOUGLAS COUNTY, ORE. *68*

**COUNTY SURVEYORS FILE DATA
DO NOT REMOVE FROM OFFICE**

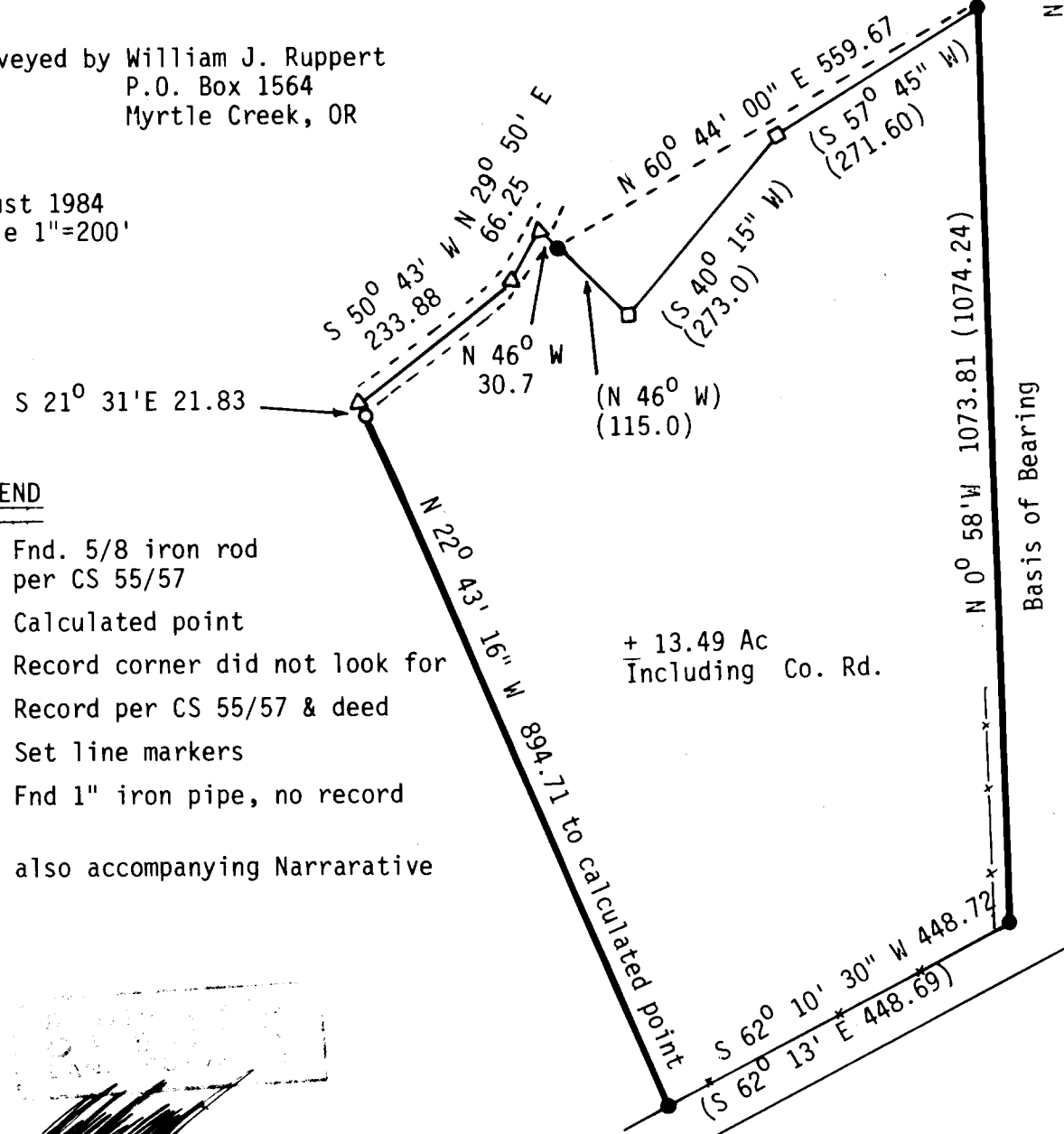
1/4 Cor S6/S7

Fnd. 2" Iron Pipe
and 3" Brass Cap

204.74
(204.0)
N 0° 58' W

Surveyed by William J. Ruppert
P.O. Box 1564
Myrtle Creek, OR

August 1984
Scale 1"=200'



LEGEND

- Fnd. 5/8 iron rod per CS 55/57
- △ Calculated point
- Record corner did not look for
- () Record per CS 55/57 & deed
- Set line markers
- Fnd 1" iron pipe, no record

See also accompanying Narrarative

+ 13.49 Ac
Including Co. Rd.

[Handwritten signature]

WILLIAM J. RUPPERT
30

YEUST ROAD

**COUNTY SURVEYORS FILE DATA
DO NOT REMOVE FROM OFFICE**

FILED *d*
RECEIVED *BP*
OCT 3 1984

COUNTY SURVEYOR
DOUGLAS COUNTY, ORE.

SURVEY NARRATIVE

William A. & Donna L. Cavener

LOCATION: Northwest Quarter (NW $\frac{1}{4}$), Section 7,
Township 32 South, Range 4 West,
Willamette Meridian.

PURPOSE: Line monuments were set on the Easterly
and Westerly lines of Deed #81-14276.

BASIS OF BEARING: Deed and CS 55/57 as shown on the
accompanying plat.

BOUNDARY CONTROL: All lines were determined by Survey
CS 55/57. The Northwest corner was
determined by record distance and
bearing from the nearest record
monument.

POSSESSION LINES: A fence line is located about 18
feet West from the Easterly line
for a distance of about 260 feet
from the Southerly line. No other
fences are on the Easterly or
Westerly lines.

EQUIPMENT: Lietz T60D Theodolite, Mac II EDM,
and 100 Foot Steel Tape.

SURVEYED BY: William J. Ruppert
971 Riverside Drive
PO Box 1564
Myrtle Creek, OR 97457

See Also Accompanying Plat

August, 1984

REGISTERED
OREGON
LAND SURVEYOR

JULY 12, 1968
WILLIAM J. RUPPERT
866

C.S. File No. 58/215 - 4b