

**COUNTY SURVEYORS FILE DATA
DO NOT REMOVE FROM OFFICE**

COUNTY SURVEYOR
DEWEE COUNTY, ORE.

SURVEY IN THE S.E. 1/4 SECTION 8, T. 27 S., R. 2 W., W.M. **KS.**

FOR: GEORGE KUYKENDALL
LITTLE RIVER ROAD
GLIDE, OREGON 97443

BY: BAUGHMAN TECHNICAL SERVICES, INC.
P.O. BOX 222
ROSEBURG, OREGON 97470

SCALE 1"=200' MAY 1980

NARRATIVE:

THE PURPOSE OF THIS SURVEY WAS TO MONUMENT AND FLAG THE WEST LINE. POINTS FOUND FROM PREVIOUS SURVEY (M 48-17) WERE USED AS CONTROL AND BASE OF BEARING. DEED DESCRIPTION DISTANCES WERE USED TO ESTABLISH THE WEST LINE.

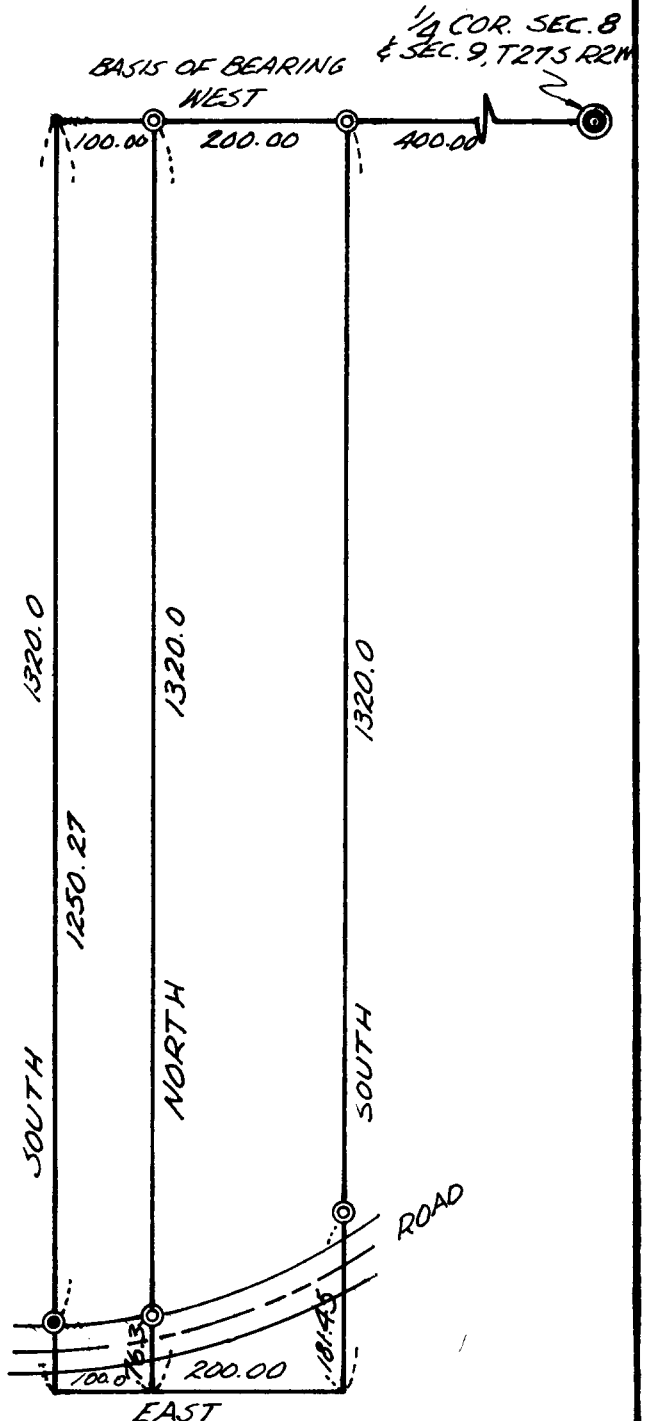
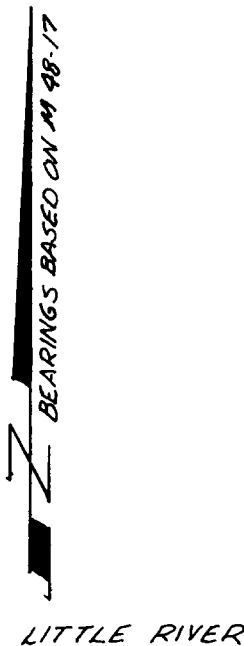
REGISTERED
PROFESSIONAL
LAND SURVEYOR

Allen S. Baughman

OREGON
JULY 14, 1981
ALLEN S. BAUGHMAN
536

LEGEND

- SET 1/2" I. ROD
- ⊙ FOUND 5/8" I. ROD
- ⊙ SET 5/8" I. ROD
- ⊙ FOUND BRASS CAP



FM 4-125