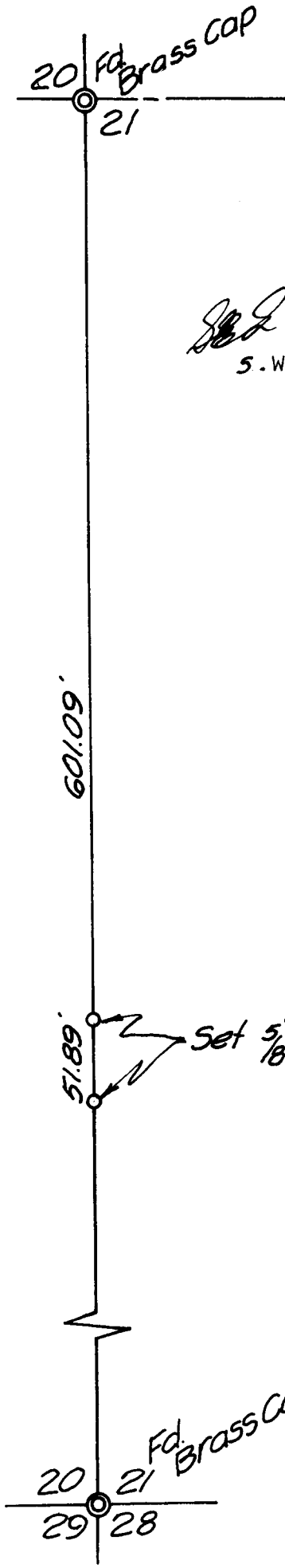


58/212-4



FILED ϕ
RECEIVED ϕ

NOV 28 1979

COUNTY SURVEYOR
DOUGLAS COUNTY, ORE

SURVEY TO ESTABLISH PROPERTY LINE ϕ

FOR

BILLIE SPARKS

IN

JSR 12-4-79
S.W. 1/4 SECTION 21, T. 23 S., R. 7 W., W.M.

BY

BAUGHMAN TECHNICAL SERVICES, INC.

NOVEMBER 1979 SCALE 1" = 100'

**COUNTY SURVEYORS FILE DATA
DO NOT REMOVE FROM OFFICE**

REGISTERED
PROFESSIONAL
LAND SURVEYOR

Glenn S. Baughman

OREGON
JULY 14, 1961
GLENN S. BAUGHMAN
536

C.S. File No. 58/212 - 4A

COUNTY SURVEYORS FILE DATA
DO NOT REMOVE FROM OFFICE

FILED
RECEIVED ϕ

NOV 28 1979

COUNTY SURVEYOR
DOUGLAS COUNTY, ORE.

C.S. 58/212

BILLIE SPARKS
NARRATIVE

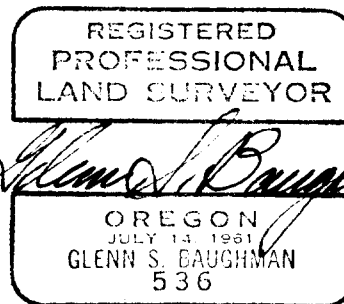
THE PURPOSE OF THIS SURVEY WAS TO ESTABLISH THE LOCATION OF THE SECTION LINE BETWEEN THE SOUTHEAST 1/4 OF SECTION 20 AND THE SOUTHWEST 1/4 OF SECTION 21, T. 23 S., R. 7 W., W.M., A PART OF WHICH FORMS THE WESTERLY BOUNDARY OF THE BILLIE SPARKS PROPERTY. BOTH THE SECTION CORNER MARKING SECTIONS 20, 21, 28, 29, AND THE 1/4 CORNER BETWEEN SECTIONS 20 AND 21 WERE FOUND. NO BASIS OF BEARING WAS ESTABLISHED SINCE THE TWO 5/8" IRON RODS SET, MARKED THE SECTION LINE ONLY.

BAUGHMAN TECHNICAL SERVICES, INC.

P.O. BOX 222

ROSEBURG, OREGON 97470

673-0966



C. S. File No. 58/144N
C. S. File No. 58/212-4b

C.S. 58/212-4b