

FILED  $\phi$   
RECEIVED  $\phi$

NOV 28 1979

COUNTY SURVEYOR  
DOUGLAS COUNTY, ORE.

SURVEY TO ESTABLISH PROPERTY CORNERS  
Lots 1-4, Block 20 Kinney's Improved Plat  
of the  
City of Roseburg, Oregon  
S.W. 1/4 Section 18, T. 27 S., R. 5 W., W.M.

for  
George James Construction Company  
by  
Baughman Technical Services, Inc.

November 1979 Scale 1"=50'

REGISTERED  
PROFESSIONAL  
LAND SURVEYOR

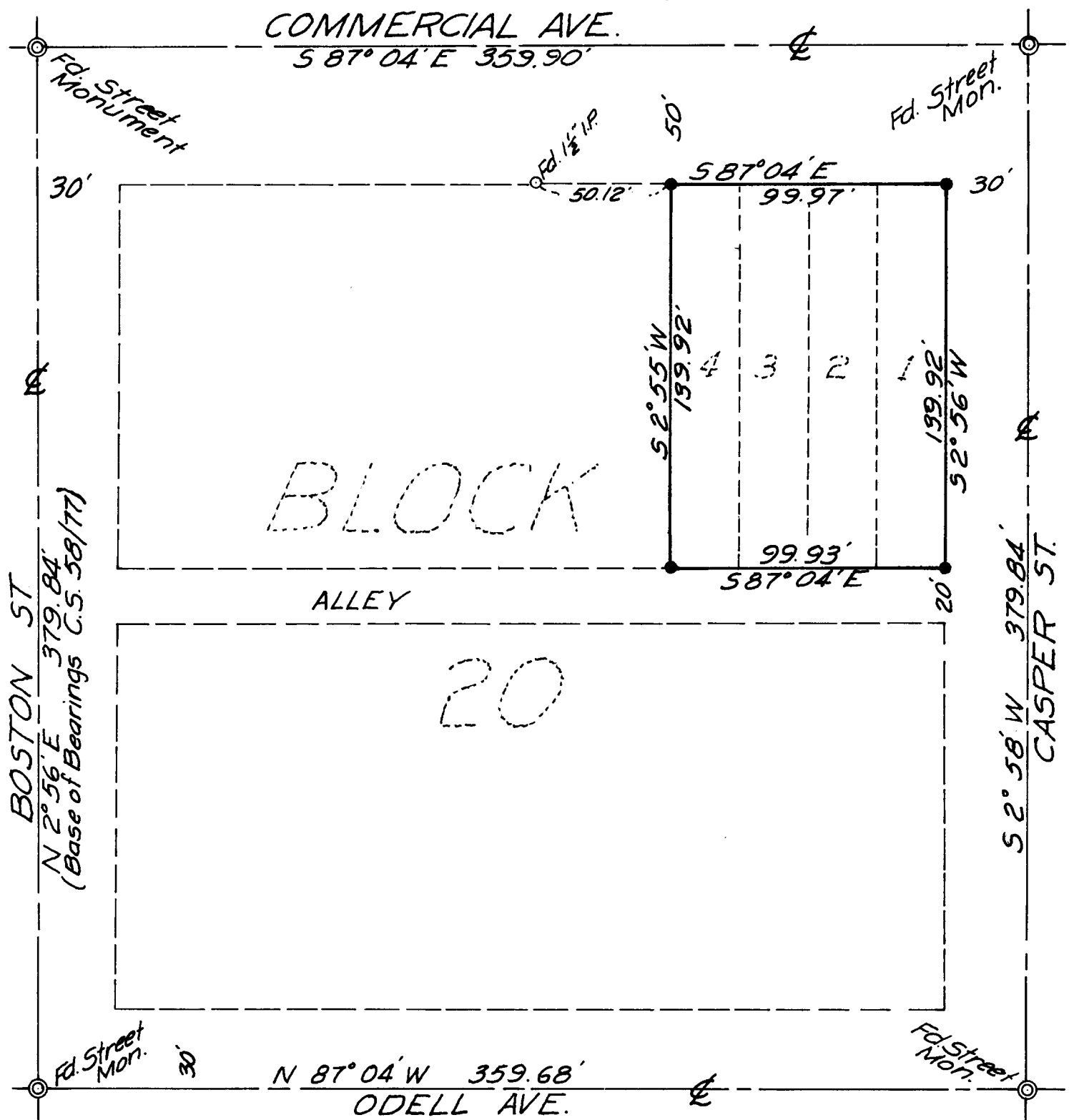
*Glenn S. Baughman*

OREGON  
JULY 14, 1964  
GLENN S. BAUGHMAN  
536

**COUNTY SURVEYORS FILE DATA  
DO NOT REMOVE FROM OFFICE**



• Set 1/2" IR



58 1212-3  
FM 4-117

CS 58/213-3A

COUNTY SURVEYORS FILE DATA  
DO NOT REMOVE FROM OFFICE

FILED  
RECEIVED  $\phi$

NOV 28 1979

COUNTY SURVEYOR  
DOUGLAS COUNTY, ORE.

*C.S. 58/212*

GEORGE JAMES  
NARRATIVE

THE PRUPOSE OF THIS SURVEY IS TO ESTABLISH THE PROPERTY CORNERS ON THE GEORGE JAMES CONSTRUCTION COMPANY PROPERTY, WHICH INCLUDES LOTS 1 THROUGH 4 OF BLOCK 20, KINNEY'S IMPROVED PLAT OF THE CITY OF ROSEBURG. ALL STREET MONUMENTS WERE FOUND AND THE MONUMENTS FOUND ON BOSTON STREET ESTABLISHED THE BASIS OF BEARING FOR THE SURVEY. PROPERTY PINS WERE SET ON EACH CORNER OF THE PROPERTY. DIMENSIONS SHOWN FOR THE PROPERTY WERE BASED UPON A PRO-RATA SHARE OF THE MEASURED DISTANCES BETWEEN THE STREET MONUMENTS, MAINTAINING THE DEDICATED WIDTHS OF THE STREETS AND THE ALLEY.

BAUGHMAN TECHNICAL SERVICES, INC.  
P.O. BOX 222  
ROSEBURG, OREGON 97470  
673-0966

REGISTERED  
PROFESSIONAL  
LAND SURVEYOR

*Glenn S. Baughman*

OREGON  
JULY 14 1951  
GLENN S. BAUGHMAN  
536

*C.S. File No. 58/144N*

*C.S. 58/213-3b*

*C.S. File No. 58/212-3*