

**COUNTY SURVEYORS FILE DATA
DO NOT REMOVE FROM OFFICE**

SURVEY TO ESTABLISH CORNERS

In Sec. 20 & 21, T. 29 S., R. 7 W., W.M.

For: Albert E. Estacio

By: Baughman Tech. Services, Inc.

October 1979

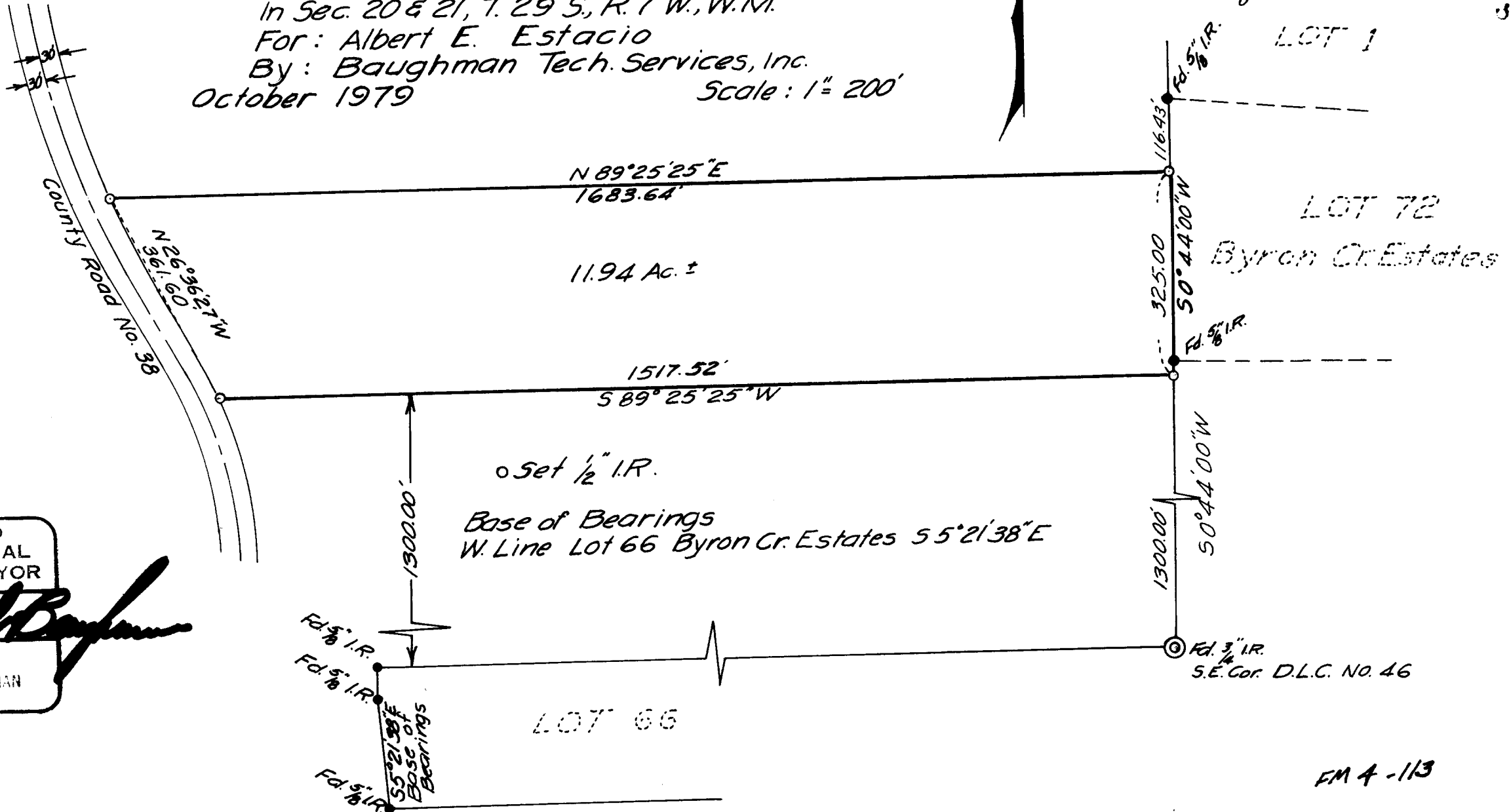
Scale: 1" = 200'

FILED ✓
RECEIVED RB

JUL 9 1980

COUNTY SURVEYOR
DOUGLAS COUNTY, ORE.

C.S. File No. C.S. 58/212-1



Base of Bearings
W. Line Lot 66 Byron Cr. Estates 55° 21' 38" E

REGISTERED
PROFESSIONAL
LAND SURVEYOR

Glenn S. Baughman

OREGON
JULY 14 1951
GLENN S. BAUGHMAN
536

LOT 66

Fd. 3" I.R.
S.E. Cor. D.L.C. No. 46

FM 4-113

C.S. File No. C.S. 58/212-1