

# SURVEY TO SET PROPERTY PINS IN THE N.E. 1/4, N.E. 1/4, SECTION 20, T24S, R3W, W.M. DOUGLAS COUNTY OREGON

For: IDAR & GOLDIE STENE  
By: Robert L. Dolan  
Rt. 1 Box 1820  
Sutherlin Or. 97479

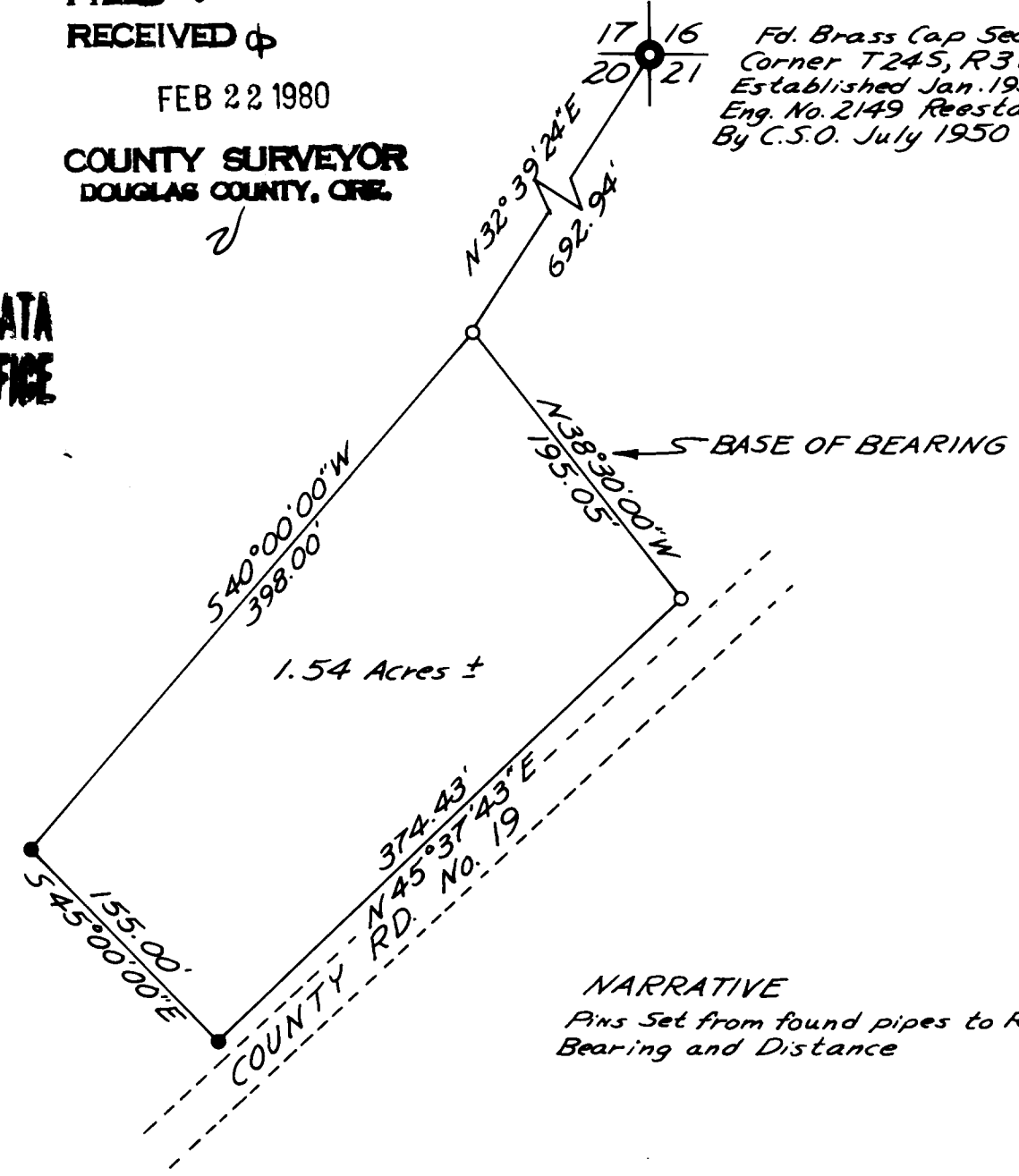
Date: Dec. 1979  
Scale: 1" = 100'

- LEGEND
- Fd. 2" I. Pipe
  - Set 5/8" I. Rods

**COUNTY SURVEYORS FILE DATA  
DO NOT REMOVE FROM OFFICE**

FILED ✓  
RECEIVED φ  
FEB 22 1980  
COUNTY SURVEYOR  
DOUGLAS COUNTY, ORE.  
✓

Fd. Brass Cap Section  
Corner T24S, R3W  
Established Jan. 1950 BY  
Eng. No. 2149 Reestablished  
By C.S.O. July 1950



NARRATIVE  
Pins Set from found pipes to Record  
Bearing and Distance

REGISTERED  
PROFESSIONAL  
LAND SURVEYOR

OREGON  
JULY 30, 1976  
ROBERT L. DOLAN  
1976