

# Survey to set the N.E. & N.W. corners of Lot 6, Luellen Acres, N.E. 1/4, N.W. 1/4, Sec 23, T27S, R6W, W.M. Roseburg, Oregon

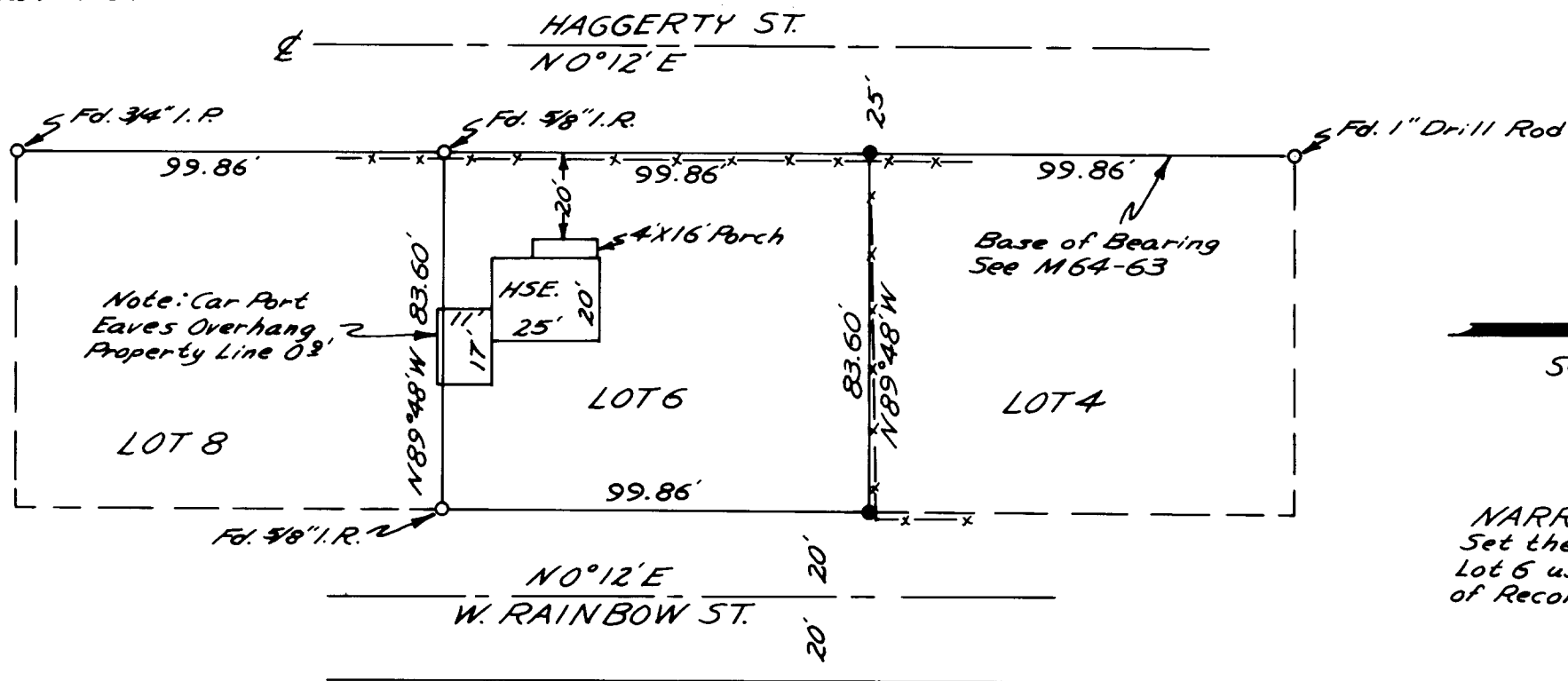
For: WALT ROGERS  
 By: H.S. SURVEYING, 1074 NE KNOLL  
 Roseburg, Oregon 97470  
 Feb. 26, 1980

**COUNTY SURVEYORS FILE DATA  
 DO NOT REMOVE FROM OFFICE**

FILED ✓  
 FEB 27 1980  
 COUNTY SURVEYOR  
 DOUGLAS COUNTY, ORE.  
 ✓

## LEGEND

- Set 5/8" Iron rod
- Found Monument as Shown



REGISTERED  
 PROFESSIONAL  
 LAND SURVEYOR

*Harold V. Stockhoff*

OREGON  
 JULY 14, 1978  
 HAROLD V. STOCKHOFF  
 1663

SCALE 1" = 40'

**NARRATIVE**  
 Set the NE & NW Corners of Lot 6 using the found corners of Record as Shown.