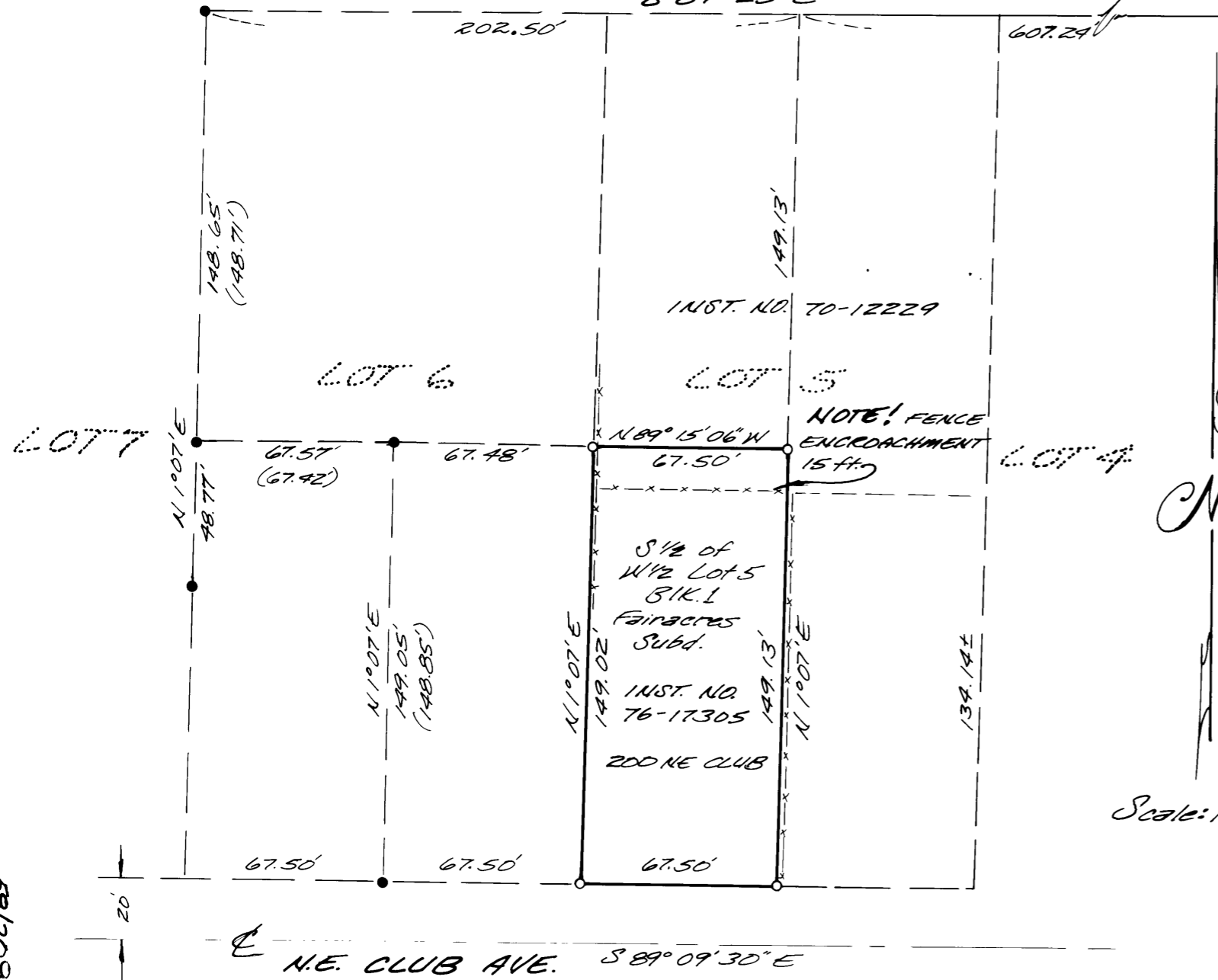


SURVEY OF DEED DESCRIPTION

IN LOT 5 BLK 1 FAIRACRES SUBDIVISION
NE 1/4, NE 1/4, SEC. 36, T26S, R6W, W.M.
DOUGLAS COUNTY, OREGON

by: H.S. SURVEYING 1074 NE KNOX, ROSEBURG, OR
for: JOHN ABELIN 200 NE CLUB, ROSEBURG, OR
DECEMBER, 1979

BASIS OF BEARING NORTH LINE OF FAIRACRES SUBD.
S 89° 25' E



Fd. 2" I.R.
NE Cor. Blk. 1
Fairacres Subd.
& Initial pt. Taft
Addition

Harold V. Stockhoff

LEGEND

- - FOUND 5/8" Iron Rod
- - Set 1/2" Iron Pipe
- () - Record

FILED ϕ
RECEIVED ϕ

DEC 21 1979

REFERENCES

MAP FILE COUNTY SURVEYOR
DOUGLAS COUNTY, ORE.
C.S. 55/59 ϕ
C.S. 55/210
R.M. 2-32
FAIRACRES PLAT VOL. 6 Pg. 43
RECORDER'S NO.'S
70-12229
76-17305

NARRATIVE

Closed traverse method using
Theodolite and E.D.M. Doubled
Angles and measured distances
in Feet and Meters.

**COUNTY SURVEYORS FILE DATA
DO NOT REMOVE FROM OFFICE**

C. S. File No. 58/209-2

C. S. File No. 58/209-2