

JAN 28 1980

SURVEY FOR COUNTY SURVEYOR ROSEBURG, LUMBER CO. & EAST LINE SECTION 29 T30S, R9W, W.M.

REGISTERED
PROFESSIONAL
LAND SURVEYOR

Romanso E. Ware

OREGON
NOV. 16, 1973
ROMANSO E. WARE
1005

LEGEND:

- ⊙ - FD. BRASS CAP
- - SET 5/8" IRON ROD & CAP

**COUNTY SURVEYORS FILE DATA
DO NOT REMOVE FROM OFFICE**

SURVEY BY:

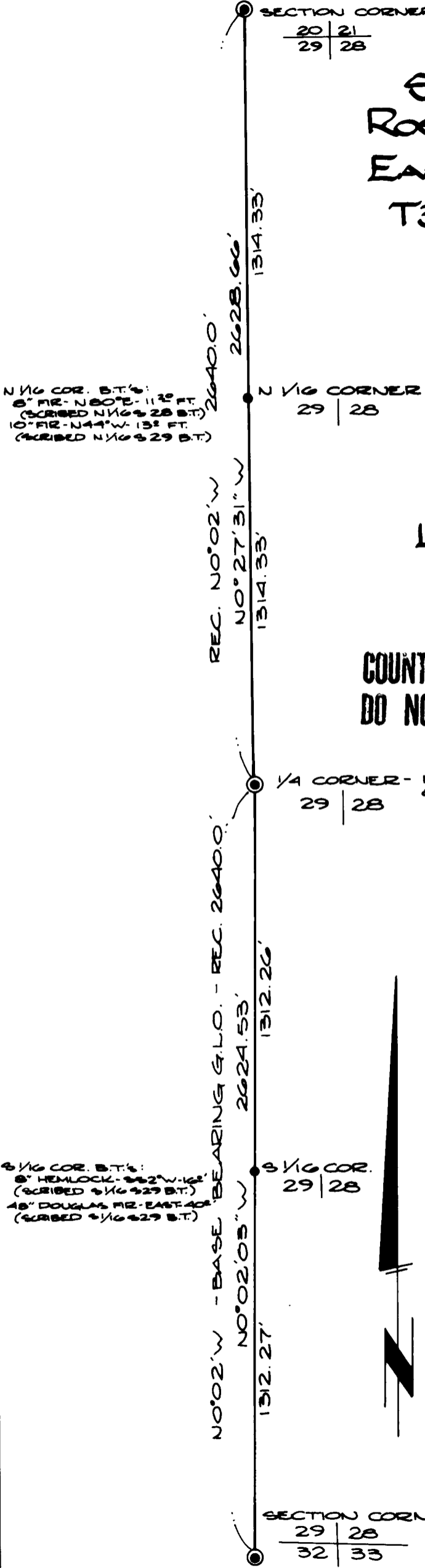
**BHW ENG. & SURVEYING
1205 S.E. COURT
ROSEBURG, ORE.**

SCALE: 1" = 400'

DECEMBER 1979

NARRATIVE:

MEASURING ACCOMPLISHED BY A COMBINATION OF CHAINING/THEODOLITE AND EDM/THEODOLITE. LINES SHOWN ARE DESIGNATED IN THE FIELD BY RED RIBBON, TREES BLAZED AND PAINTED (YELLOW), AND BOUNDARY TAGS.



N 1/4 COR. B.T.'s:
8" IR - N 80° E - 11 1/2' FT.
(SCRIBED N 1/4 S 28 B.T.)
10" IR - N 44° W - 13' FT.
(SCRIBED N 1/4 S 29 B.T.)

3/16 COR. B.T.'s:
8" HEMLOCK - S 62° W - 12'
(SCRIBED 3/16 S 29 B.T.)
48" DOUGLAS FIR - EAST 40'
(SCRIBED 3/16 S 29 B.T.)

SECTION CORNER - FD. BRASS CAP
& B.T.'S OF RECORD

20 | 21
29 | 28

N 1/4 CORNER
29 | 28

1/4 CORNER - FD. BRASS CAP
& B.T.'S OF RECORD

29 | 28

3/16 COR.
29 | 28

SECTION CORNER - FD. BRASS CAP
& B.T.'S OF RECORD

29 | 28
32 | 33