

LOTS 23, 22, 21 AND THE WLY 7' OF LOT 20
 BLOCK 17, AMMENDED PLAT "D"
 SUTHERLIN, ORE. S.E. 1/4, S.W. 1/4 Sec. 17, T. 25S., R. 5W.W.M.
 SURVEYED FOR DOUG DENSE
 BY BRUCE ROGERS - 2737 N.W. CAIKINS
 Roseburg, Or.
 OCT. 21, 1980
 1" = 40'

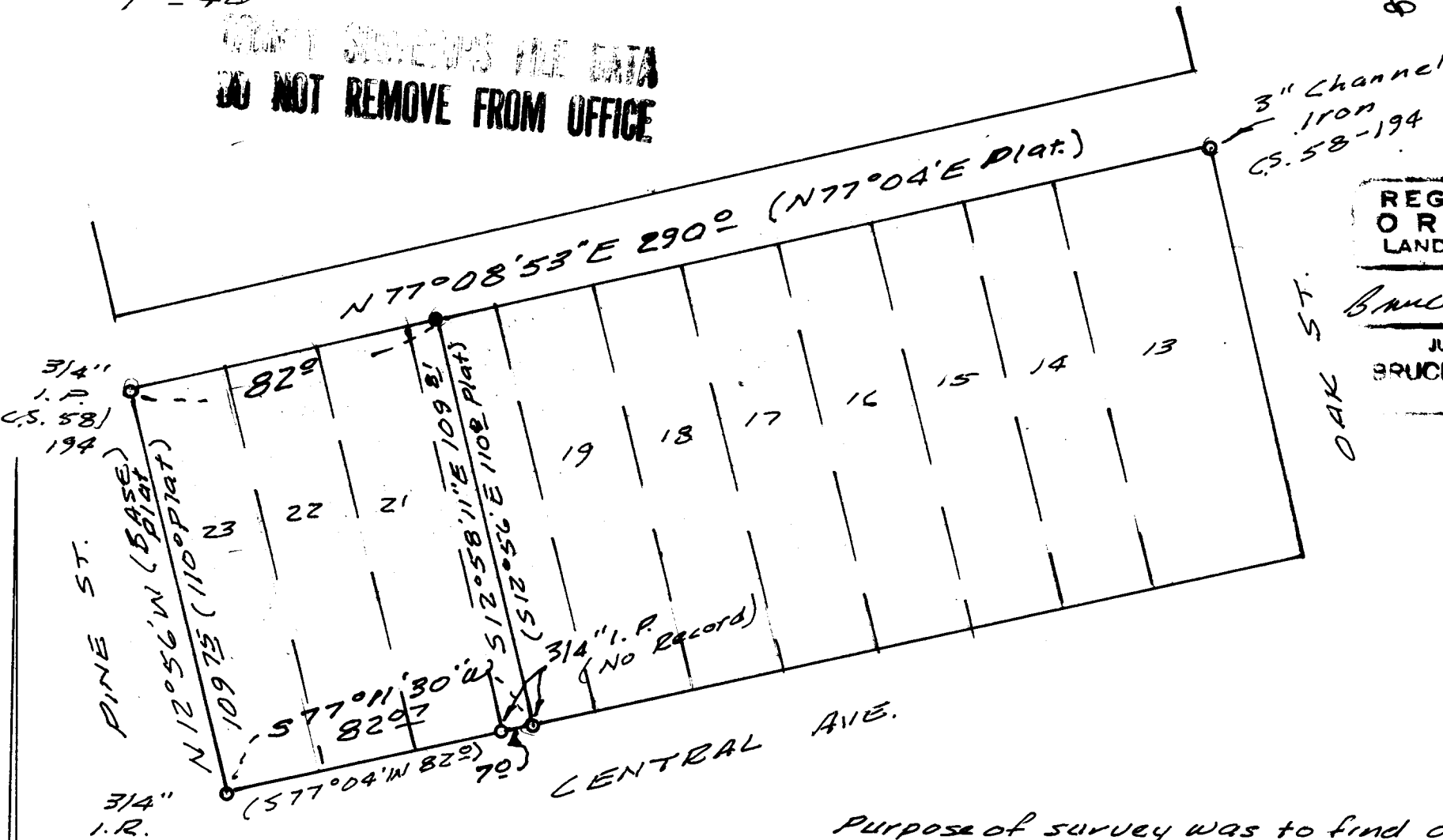
FILED ϕ
 RECEIVED ϕ

OCT 23 1980

COUNTY SURVEYOR
 DOUGLAS COUNTY, ORE.

C.S. File No. 58/2036

COUNTY SURVEYORS FILE DATA
 DO NOT REMOVE FROM OFFICE



REGISTERED
 OREGON
 LAND SURVEYOR

Bruce R. Rogers

JULY 10, 1964
 BRUCE R. ROGERS
 660

- - FOUND MONUMENTS
- - SET 5/8" IRON ROD

Purpose of survey was to find or set
 the corners of the property shown. I
 tied the found monuments with transit
 & chain traverse & set the N.E. Cor.
 from calculated tie.

C.S. File No. 58/2036