

COUNTY SURVEYORS FILE DATA
DO NOT REMOVE FROM OFFICE

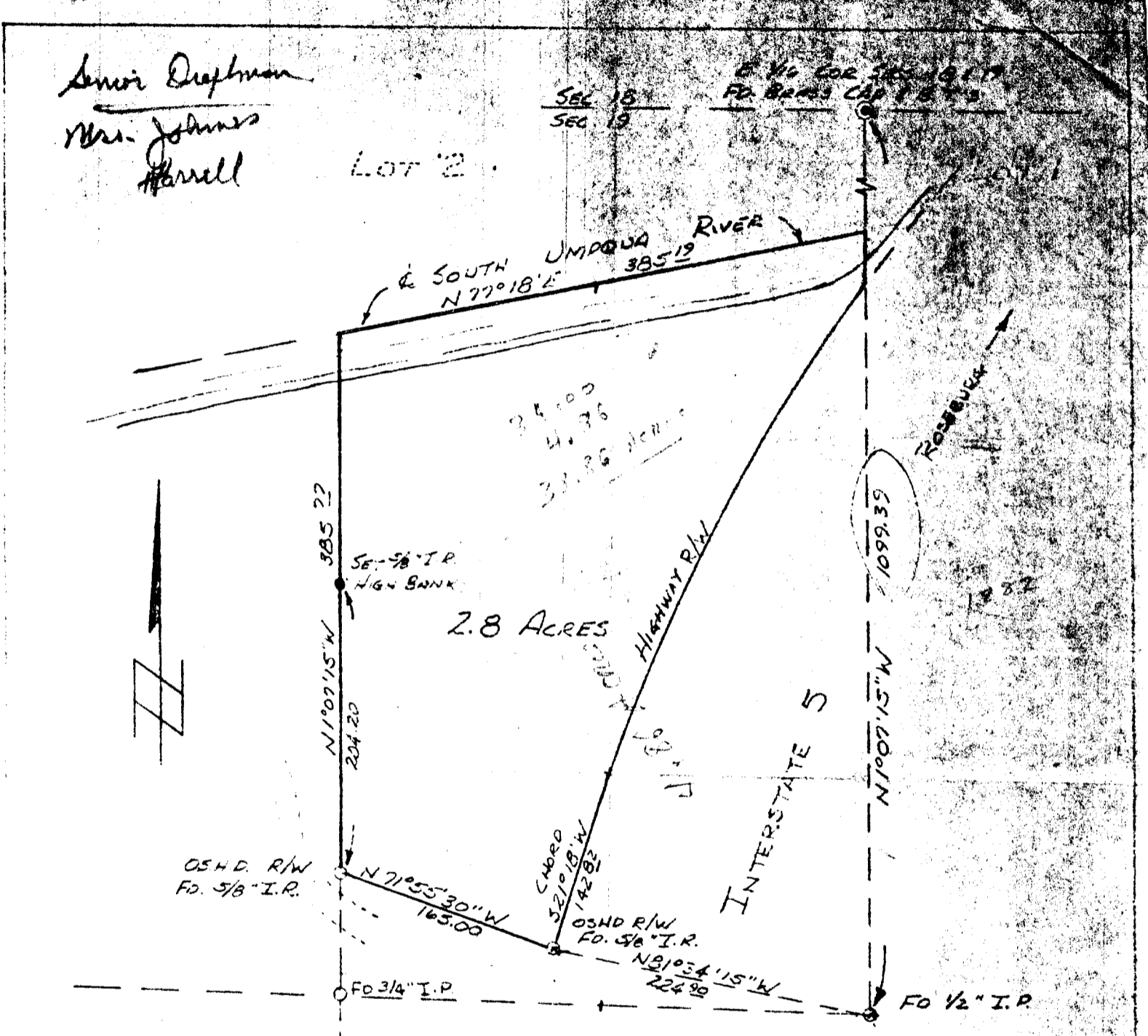
FILED &
RECEIVED *df*

JUL 28 1980

COUNTY SURVEYOR
DOUGLAS COUNTY, ORE

Senior Draftsman
Mrs. James Harrell

LOT 2



COUNTY SURVEYORS FILE DATA
DO NOT REMOVE FROM OFFICE
13/55

FIELD SURVEY & PLAT
JOHN RAMSOWER

PARCEL IN NW 1/4 NE 1/4 SEC 19, T30S R5W, W.M.
DOUGLAS COUNTY, ORE.

SCALE: 1" = 100' JUNE 1970
MARTIN ENGINEERING SERVICE - MYRTLE CREEK, ORE