

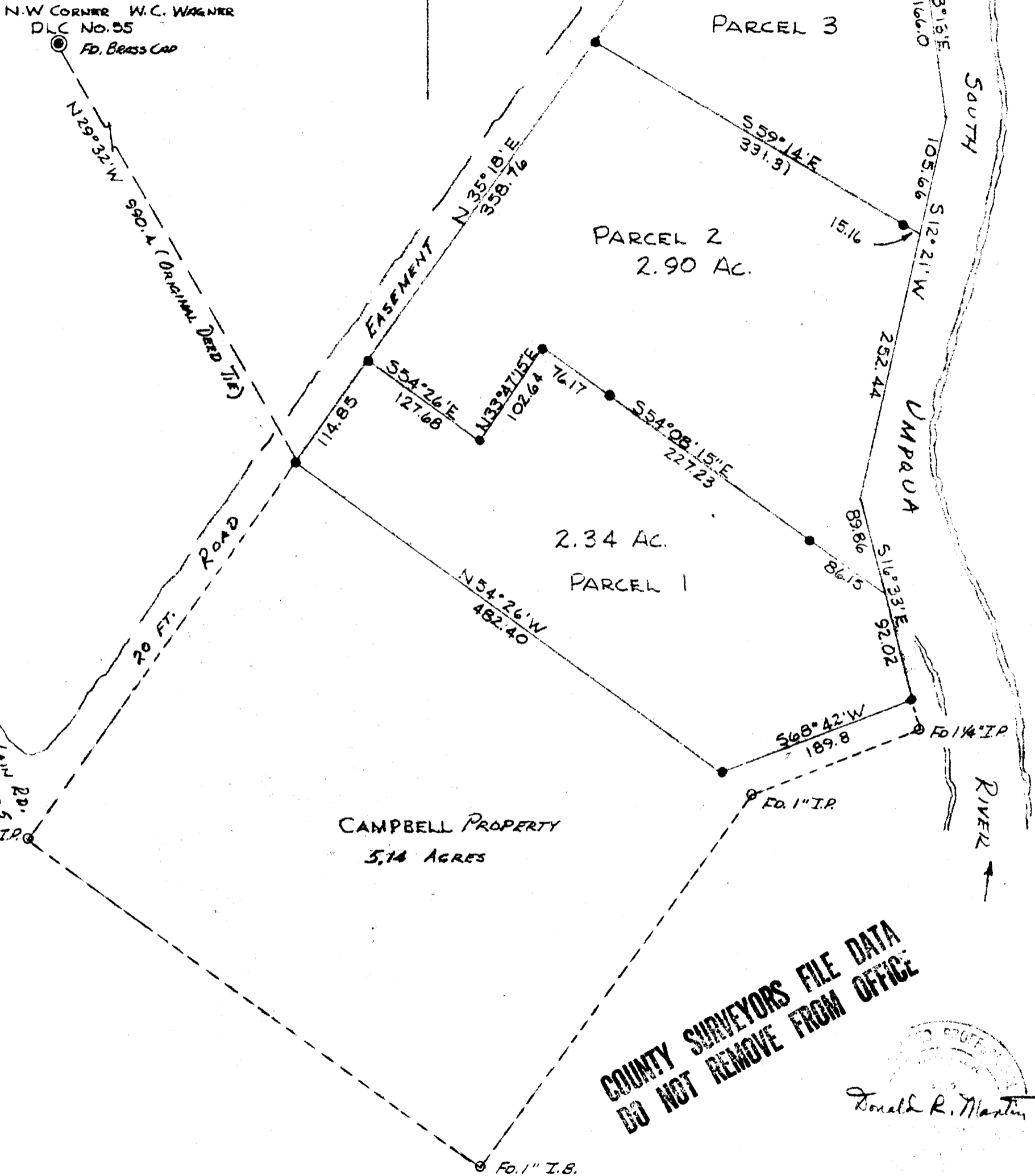
COUNTY SURVEYORS FILE DATA
DO NOT REMOVE FROM OFFICE

FILED
RECEIVED *HL*

JUN 2 1980

COUNTY SURVEYOR
DOUGLAS COUNTY, ORE.

N.W. CORNER W.C. WAGNER
DLC NO. 55
FD. BRASS CAP



COUNTY SURVEYORS FILE DATA
DO NOT REMOVE FROM OFFICE

Ronald R. Martin

○ FOUND IRON PIPE
● SET 5/8" IRON ROD

REFERENCE SURVY - BY EPPSTEIN, Vol. 4 P. 65
1940 (BASE OF BEARINGS N35°18'E)

A FIELD SURVEY & PLAT FOR

MARY C. MYERS

ROSEBURG, OREGON

PARCEL IN SW 1/4 SEC. 36, T 27 S, R 6 W, W.M.

DOUGLAS COUNTY, OREGON

SCALE 1"=100'

APRIL 1970

MARTIN ENGINEERING SERVICE - MYRTLE CREEK, ORE.

G.L.E. No. 58/200-5