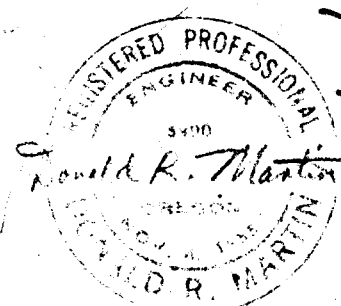
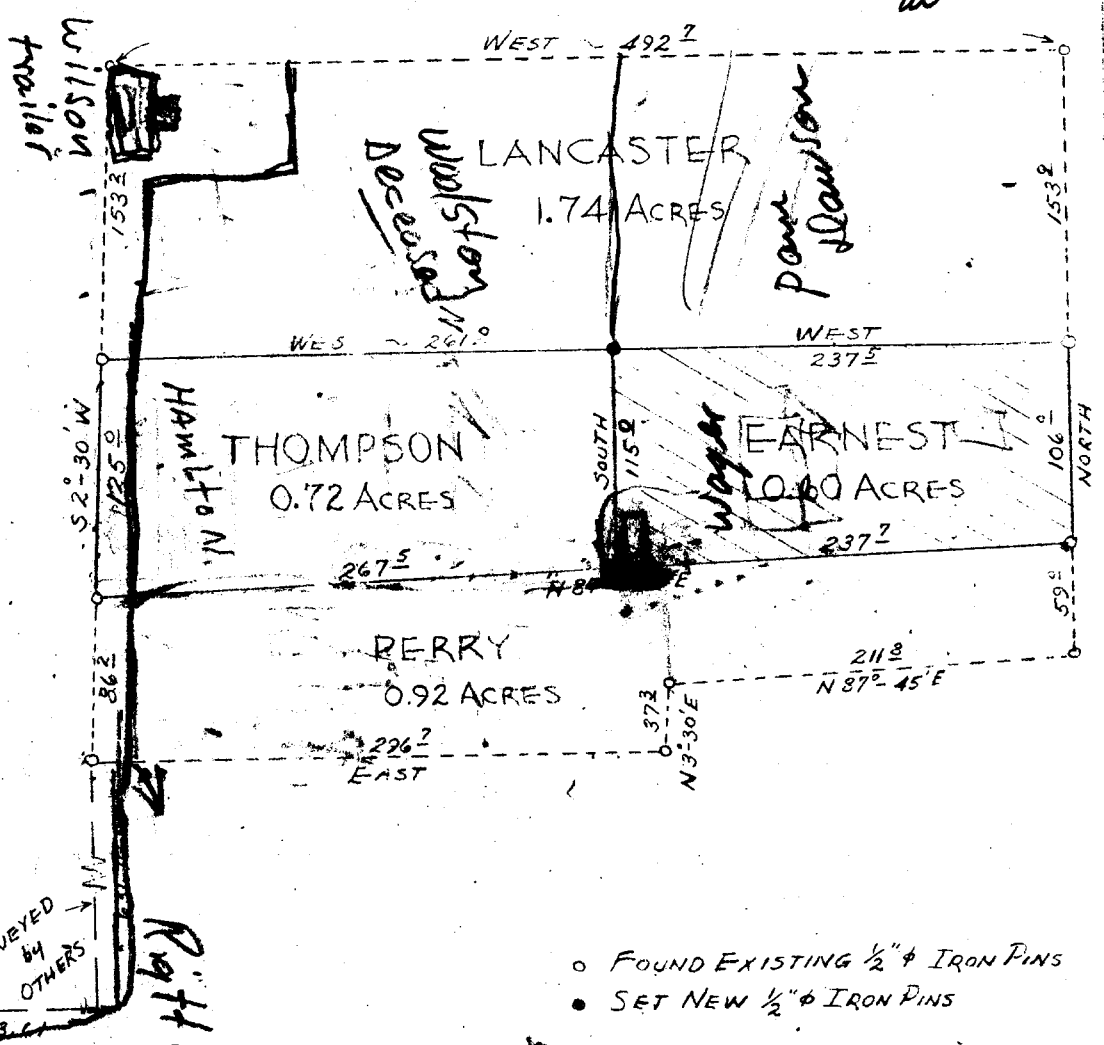


FILED  
RECEIVED TP

MAY 9 1979

COUNTY SURVEYOR  
DOUGLAS COUNTY, ORE.



COUNTY SURVEYORS FILE DATA  
DO NOT REMOVE FROM OFFICE

PLAT PREPARED FOR  
**JOYCE EARNEST**  
 RIDDLE, OREGON  
 SEC. 33 T30S R6W W.M. DOUGLAS COUNTY, ORE.  
 SCALE: 1"=100'  
 Nov. 11, 1956  
 DON R. MARTIN