

7-867/25-118130.
2/28/80

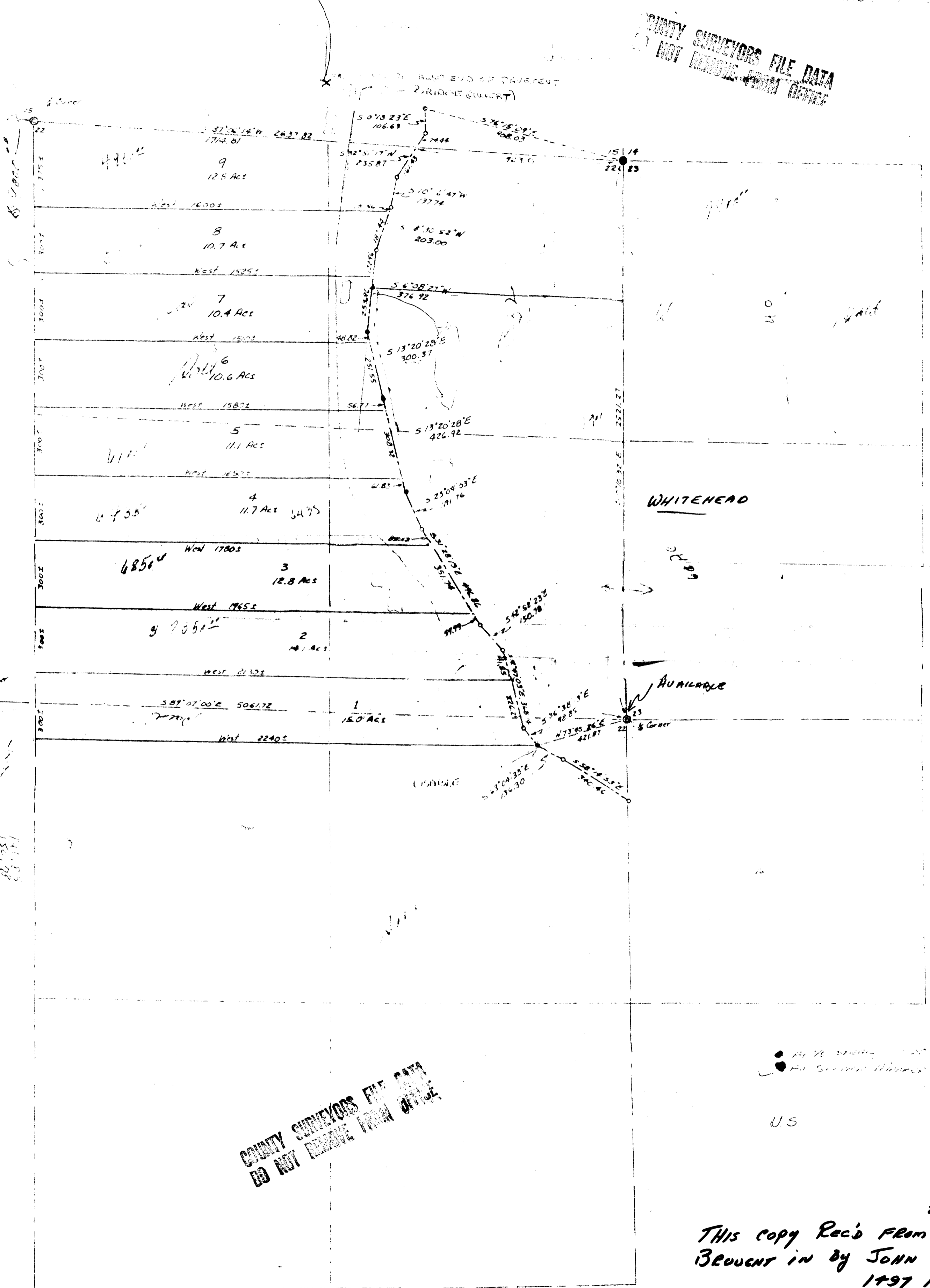
Map Showing Proposed Property Division in Sections 22 & 23, T29S, R6W, W.M., Douglas Co., Ore

Prepared for Willis Creek Properties Inc. by Victor M. Mc Lind
June 1971

Scale 1" = 30'

COUNTY SURVEYORS FILE DATA
DO NOT REMOVE FROM OFFICE

FILED
RECEIVED 7/8
FEB 26 1980
COUNTY SURVEYOR
DOUGLAS COUNTY, ORE



14
12
11
10
9
8
7
6
5
4
3
2
1
352.23
151.85
86.74
88.83

COUNTY SURVEYORS FILE DATA
DO NOT REMOVE FROM OFFICE

FILE SURVEY DATA
DO NOT REMOVE FROM OFFICE

U.S.

2/2/80
THIS COPY REC'D FROM A COPY
BROUGHT IN BY JOHN SANCHEZ
1497 NW EDEN
ROSEBURG, OR 97470
TEL. #172-8834

FOR INFORMATION ONLY - NO
SURVEY -
J.R.