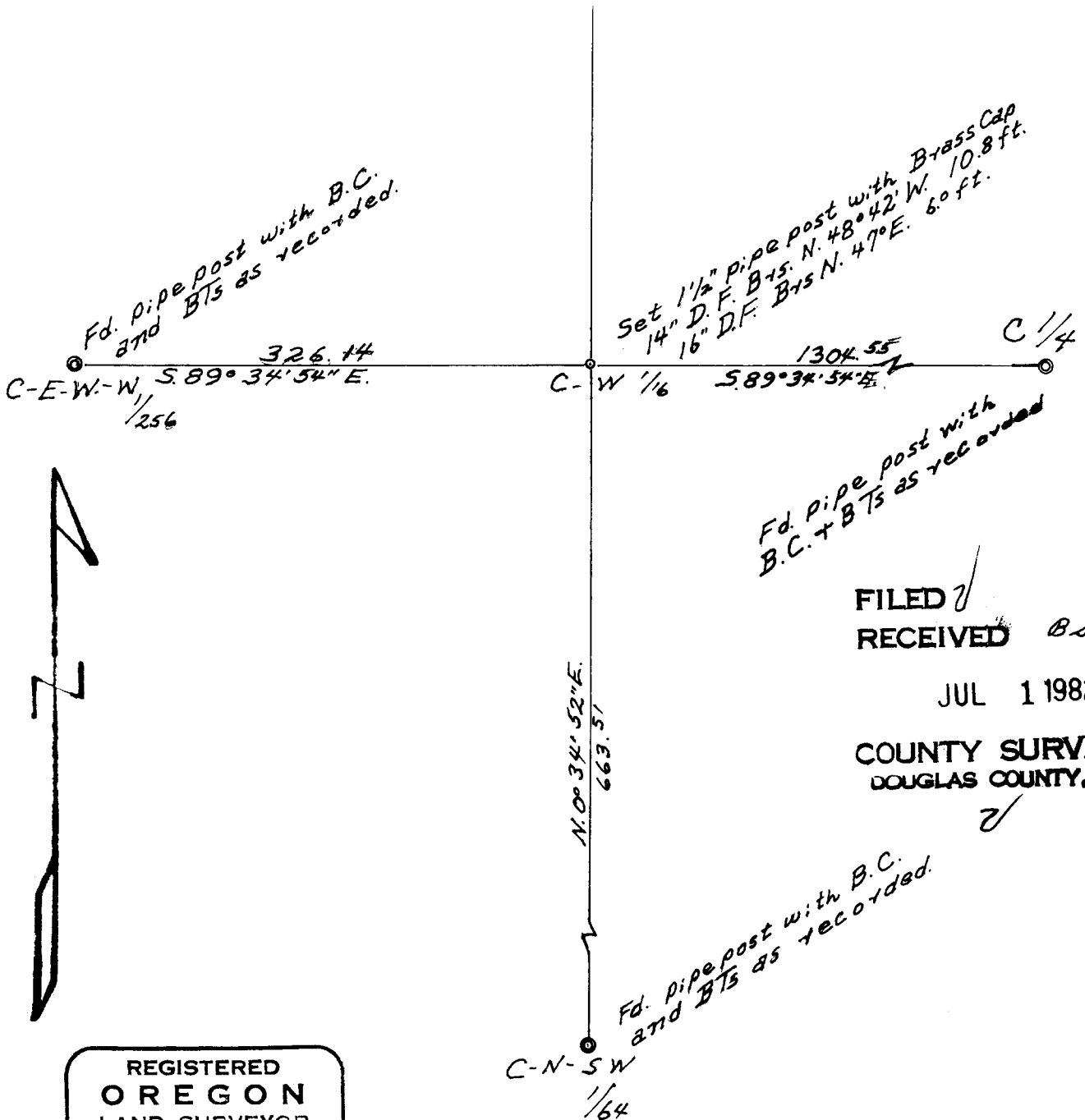


**COUNTY SURVEYORS FILE DATA  
DO NOT REMOVE FROM OFFICE**

Survey to set the C-W 1/16 Corner in Sec. 32, T. 20 S. R. 10 W. W. M. in Douglas County. For International Paper Co. This Corner was established from hubs and data from my 1979 survey of the subdivision of this section. See my map filed in April 1979 of that survey. File No. M 76-55  
Scale: 1" to 100 ft. Date: May 24, 1982.  
The B Ts are marked "BT C-W 1/16 S 32" International Paper Co. yellow tags are posted on each B. T. The Monument is marked "PLS 453 T. 20 S. R 10 W. C-W 1/16 S 32 1982, on a 1 1/2" by 36" pipe post.

Forrest J. Hales # 453  
1490 N. Ivy  
Coquille, Oregon 97423

Basis of bearings: The E-W 1/4 line is S. 89° 34' 54" E.



FILED ✓  
RECEIVED BS  
JUL 1 1982  
COUNTY SURVEYOR  
DOUGLAS COUNTY, ORE.  
✓

REGISTERED  
OREGON  
LAND SURVEYOR

*Forrest J. Hales*

OCTOBER 24, 1958  
FORREST J. HALES  
453

1490 N. Ivy  
Coquille, Ore. 97423