

COUNTY SURVEYORS FILE DATA
DO NOT REMOVE FROM OFFICE

FILED ✓
RECEIVED ✓

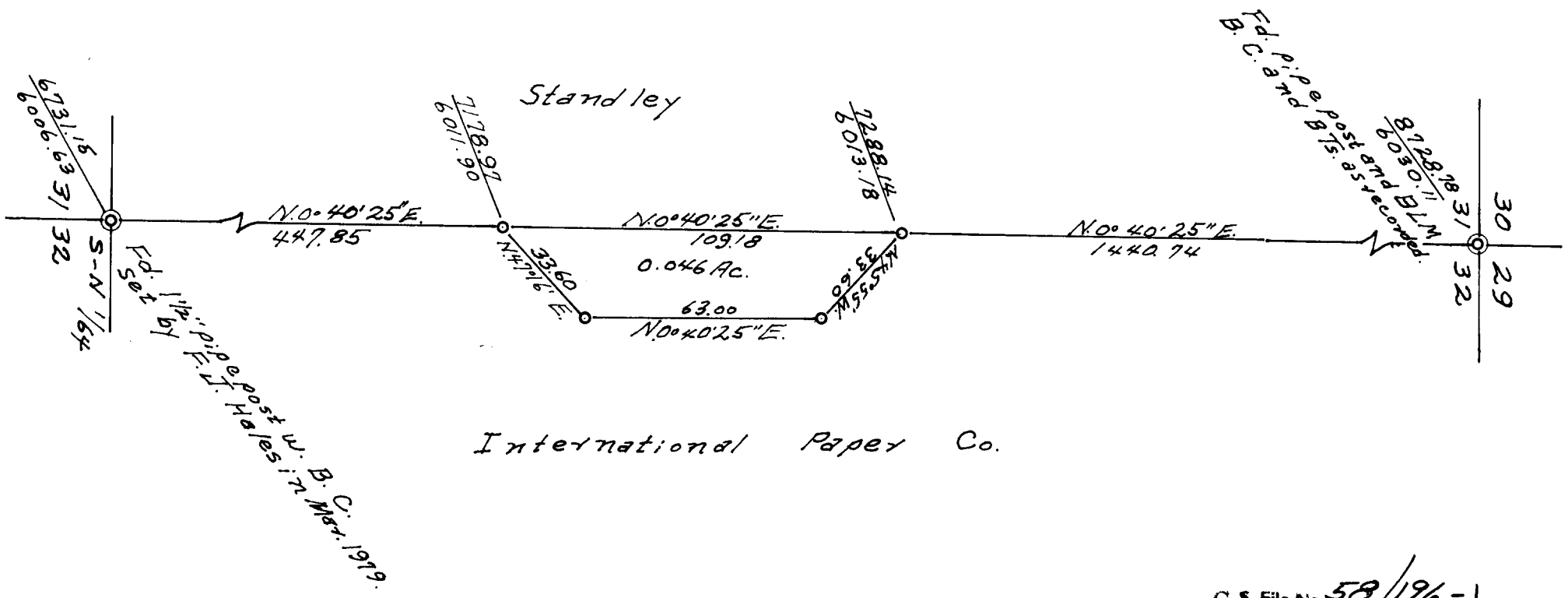
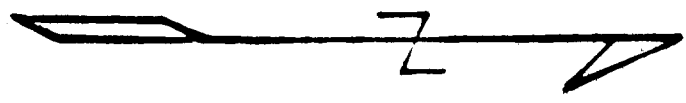
APR 16 1979

PROPERTY SURVEY

COUNTY SURVEYOR
DOUGLAS COUNTY, ORE.
YW ~~ES~~

For: International Paper Co.
In: SW $\frac{1}{4}$ NW $\frac{1}{4}$ Section 32, T. 20 S., R. 10 W. W. M.
Bearings shown: True as determined from Solar observations.
Monuments found shown: ⊙ Pipe posts with Brass Caps.
Monuments set shown: ○ 5/8" x 40" iron rod posts.
Scale: 1" to 40 ft. April 2, 1979.

REGISTERED
OREGON
LAND SURVEYOR
Forrest J. Hales
OCTOBER 21, 1958
FORREST J. HALES
453



C. S. File No. 58/196-1