

FIRST AVE.

FILED

MAR 22 1979

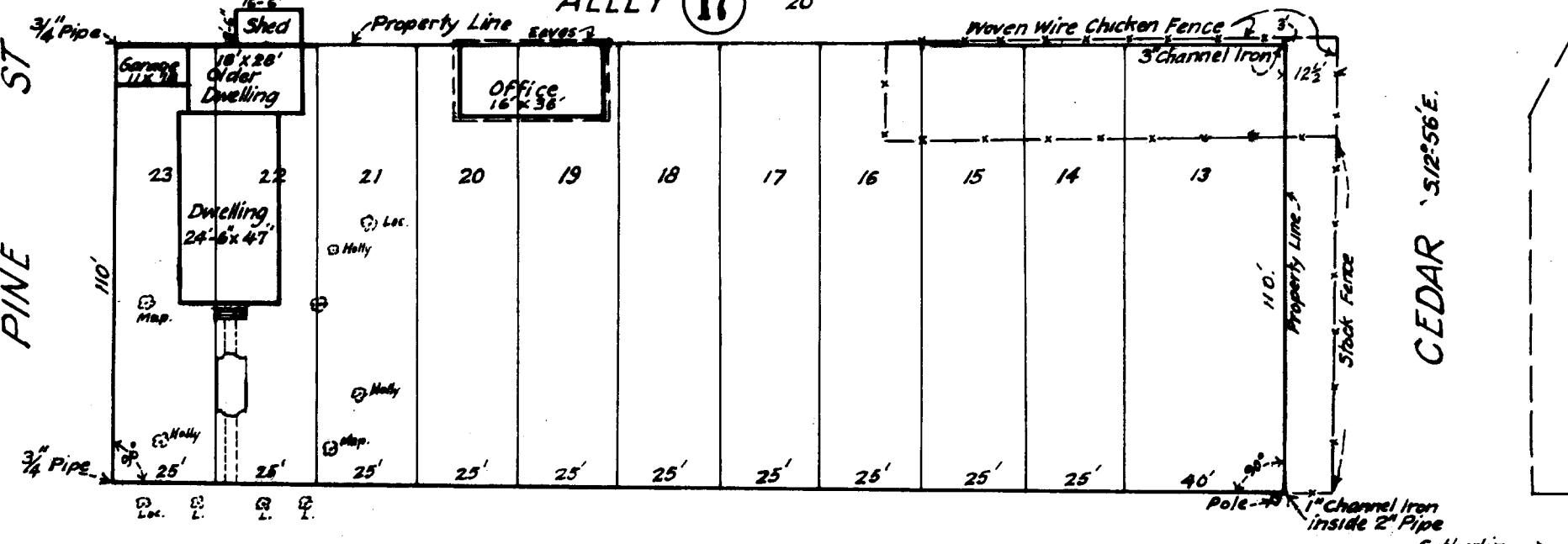
COUNTY SURVEYOR
DOUGLAS COUNTY, ORE.

STREET

60' S. 12° 56' E.

PINE ST

ALLEY 17 20'



COUNTY SURVEYORS FILE DATA
DO NOT REMOVE FROM OFFICE

CENTRAL AVE.

60' N 77° 04' E.

STACK PROPERTY IMPROVEMENTS
LOTS 13 to 23 incl., BLOCK 17, AMENDED PLAT
OF PLAT 'O', SUTHERLIN LAND & WATER CO. or
J. F. LUSE CO. in Sec. 17, T25S. R5W, W1M.
DOUGLAS COUNTY, ORE: SCALE, 1"=50' JAN 1942-