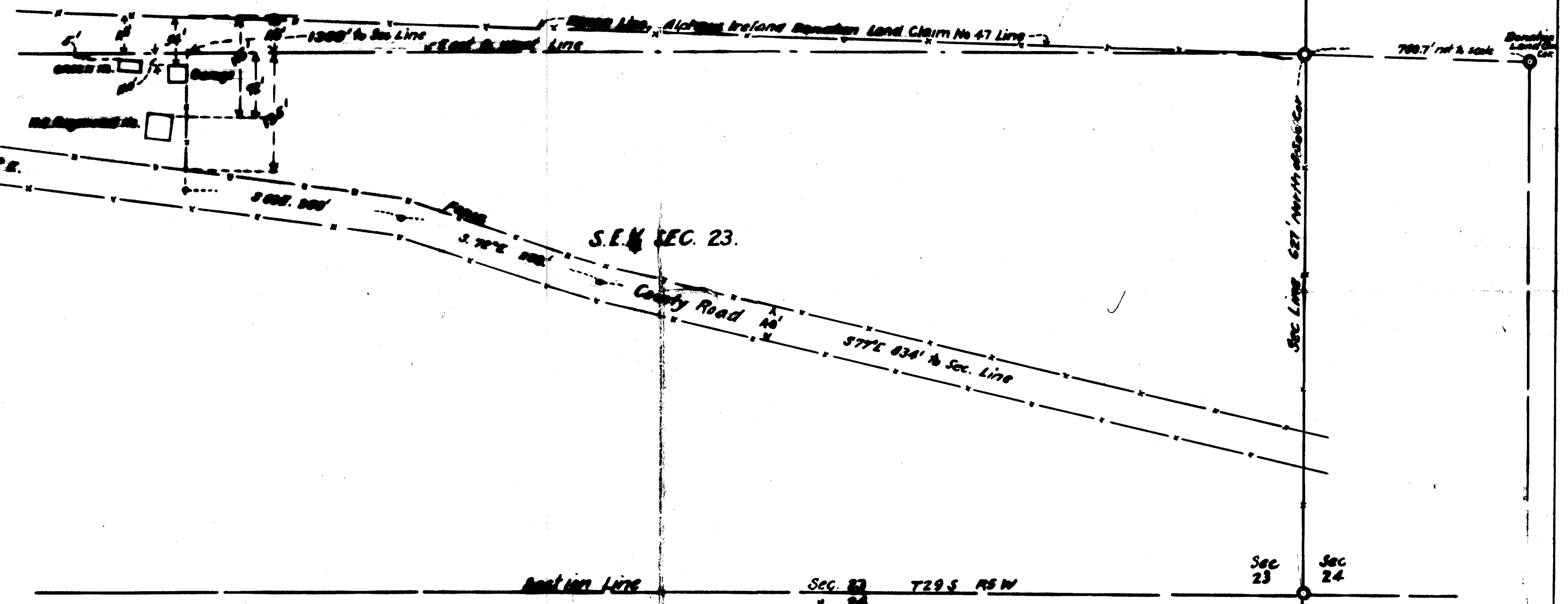


FILED

MAR 22 1979

COUNTY SURVEYOR  
DOUGLAS COUNTY, ORE.  
W

1922



COUNTY SURVEYORS FILE DATA  
DO NOT REMOVE FROM OFFICE

COUNTY SURVEYOR'S OFFICE ROSEBURG, ORE.  
RELATIVE LOCATION OF IMPROVEMENTS IN SEC 23 T29S, R15W.  
DOUGLAS COUNTY, ORE.  
SCALE, 1" = 100'. A.D. 1978. J.C.S. 1978

G.S. FILE C.S. 1978-11