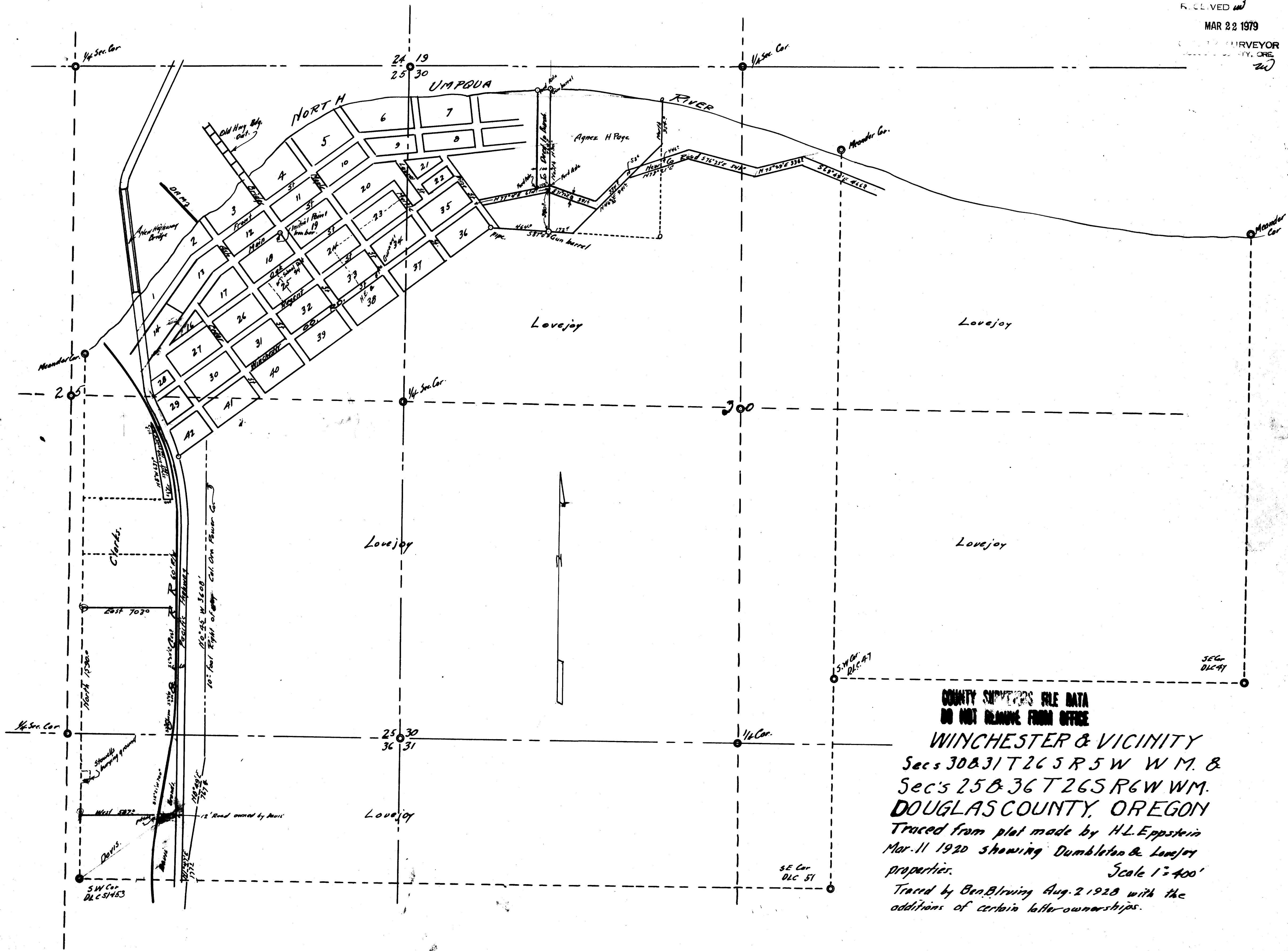


FILED
RECEIVED
MAR 22 1979
COUNTY SURVEYOR
DOUGLAS COUNTY, ORE



**COUNTY SURVEYORS FILE DATA
DO NOT REMOVE FROM OFFICE**

WINCHESTER & VICINITY
 Secs 30 & 31 T 26 S R 5 W W.M. &
 Sec's 25 & 36 T 26 S R 6 W W.M.
DOUGLAS COUNTY, OREGON
 Traced from plat made by H.L. Eppstein
 Mar. 11 1920 showing Dumbleton & Lovejoy
 properties.
 Scale 1" = 400'
 Traced by Ben. Blrving Aug. 2 1928 with the
 additions of certain later-ownerships.