

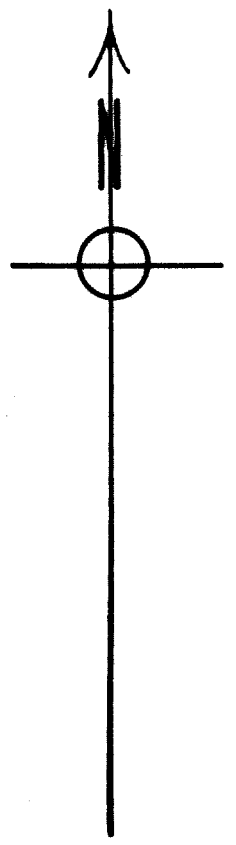
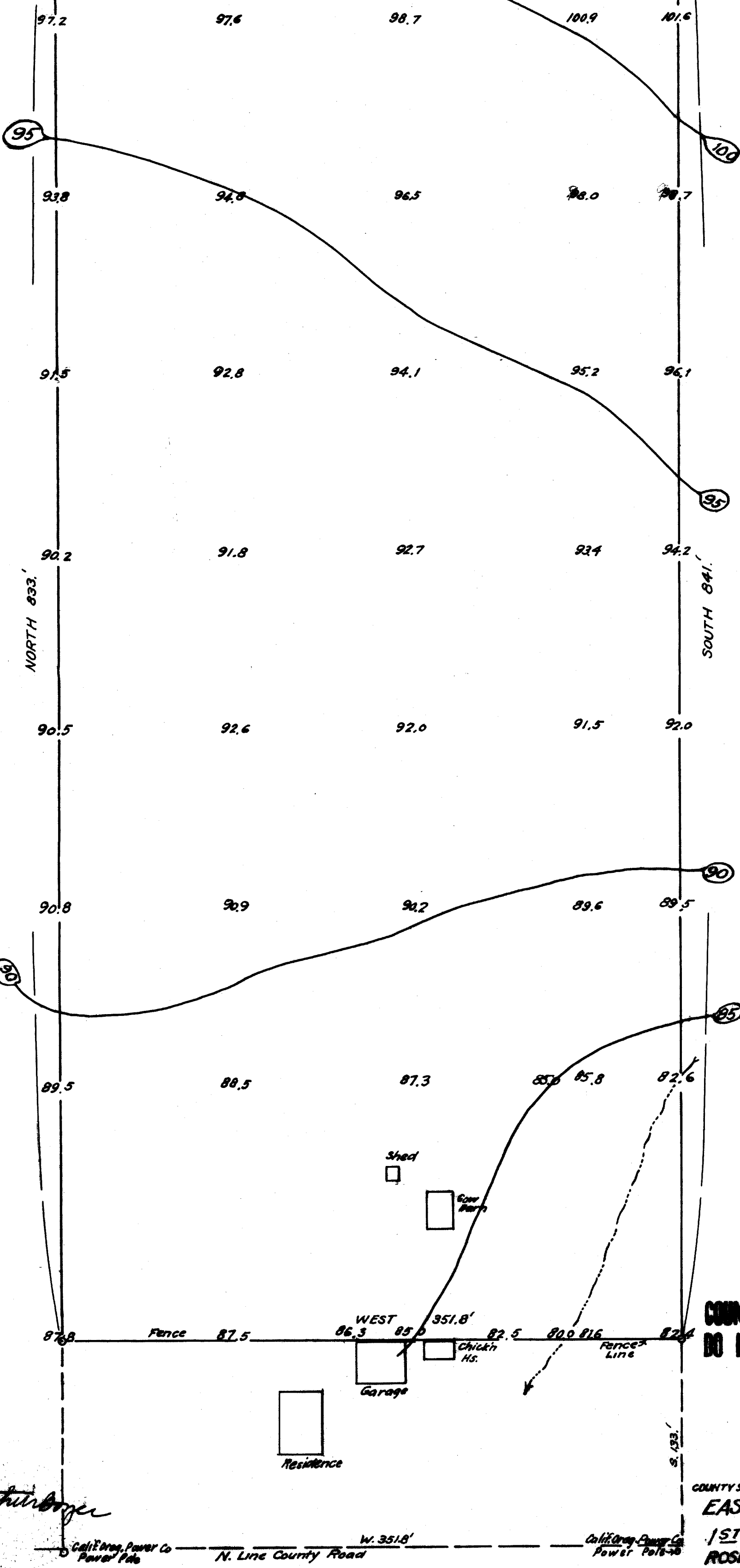
4

FILED
RECEIVED

MAR 22 1979

COUNTY SURVEYOR
DOUGLAS COUNTY, ORE.

Bench Mark
E1. 100.0 S. Line County Road 101.5
102.5 103.8 101.7
EAST 351.8'



COUNTY SURVEYORS FILE DATA
DO NOT REMOVE FROM OFFICE.

COUNTY SURVEYOR'S OFFICE, ROSEBURG, OREGON.

EAST EIGHT AC. LOT 24,
1ST. BROOKSIDE ADD. TO
ROSEBURG, DOUGLAS COUNTY, ORE.

AUG. 1943. A. BOYER, DEP. SCALE, 1/2"=200'

T 27-5 S. 20

C. S. File No. C.S. 57/87-7

Arthur Boyer

Calif. Elec. Power Co
Power Pole

N. Line County Road

W. 351.8'

Calif. Elec. Power Co
Power Pole