

4/1/80

INFORMATION REC'D FROM  
RICK KOBERNIK - (UNFILED SURVEY)

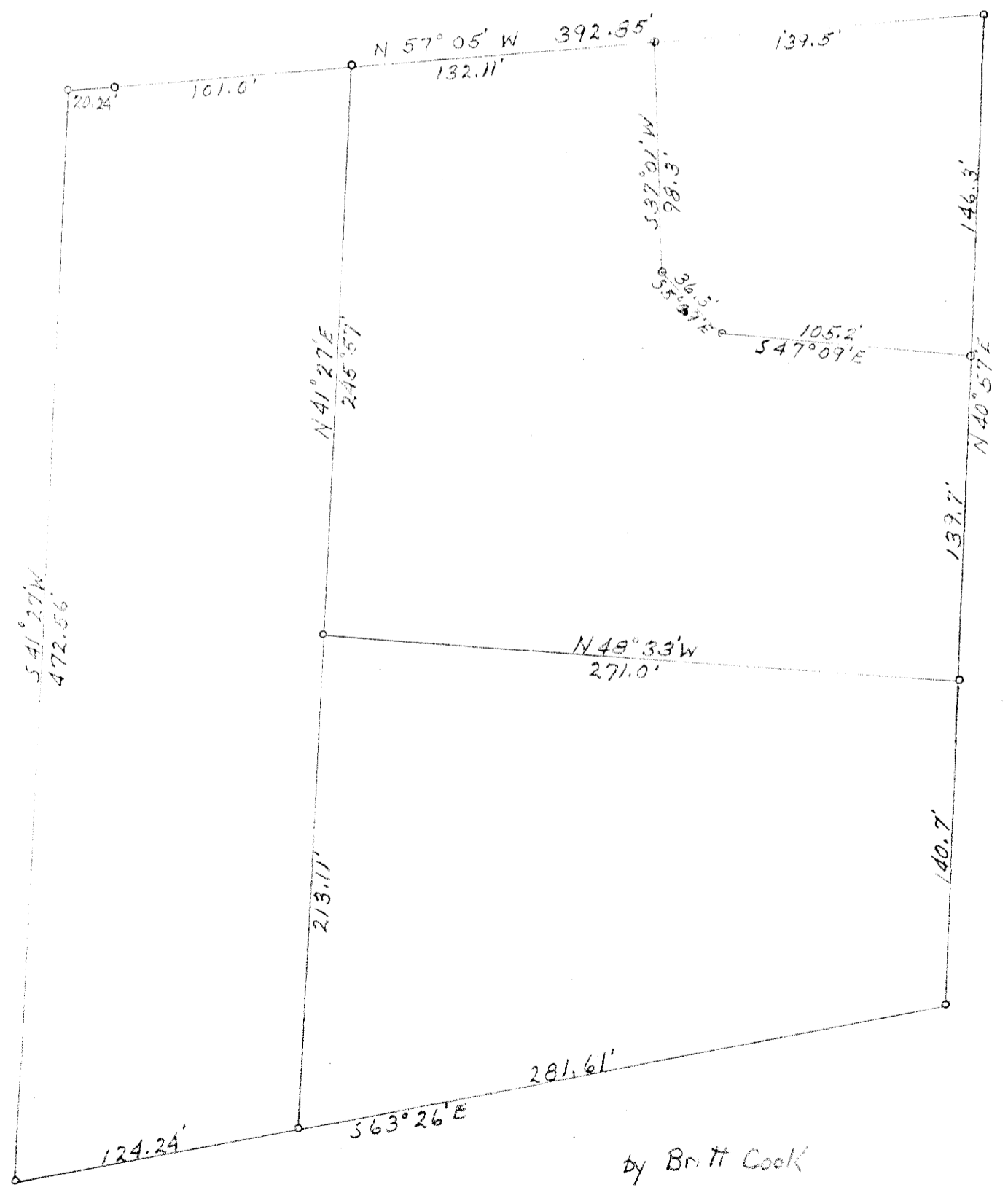
R24E T24N S. 15

FILED DP  
RECEIVED *vl*

APR 1 1980

COUNTY SURVEYOR  
DOUGLAS COUNTY, ORE.

DO NOT REMOVE FROM OFFICE



by Britt Cook

COUNTY SURVEYORS FILE DATA  
DO NOT REMOVE FROM OFFICE

FILED 29  
RECEIVED 28

APR 1 1980

COUNTY SURVEYOR  
DOUGLAS COUNTY, ORE.

DISTANCE	LOG. DIST. & LOG. DISTANCE	LAT.		DEP.		CO-ORDINATES	
		N	S	E	W	NORTH	EAST
184.5 N 57° 05' W	2.144574 2.144574 9.735135 9.924001 1.379709 2.068575	75.8			117.1		
98.3 S 37° 01' W	1.992554 1.992554 9.702253 9.779631 1.894807 1.772185		78.5		59.2		
36.3 S 57° 01' E	1.559907 1.559907 9.998243 8.953100 1.558150 0.513007		36.2	3.3			
105.2 S 47° 09' E	2.022016 2.022016 9.832561 9.865185 1.854577 1.887201		71.5	77.1			
146.3 N 40° 57' E	2.165244 2.165244 9.878109 9.816507 2.043353 1.981751	110.5		95.9			
		186.3	186.2	176.3	176.3		

SURVEYOR'S NAME \_\_\_\_\_ COMPUTED BY \_\_\_\_\_ DATE \_\_\_\_\_  
 SURVEYOR'S NAME \_\_\_\_\_ COMPUTED BY \_\_\_\_\_ DATE \_\_\_\_\_  
 SURVEYOR'S NAME \_\_\_\_\_ COMPUTED BY \_\_\_\_\_ DATE \_\_\_\_\_

PAGE \_\_\_\_\_

C. S. File No. 58/192-8b