

STONE  
NORTH 1/4 COR. SEC. 15

S 57°16'E BASE BEARING  
20'  
SPAUR ROAD  
FISK FRUIT FARMS

FILED DP  
RECEIVED *SL*

APR 1 1980

COUNTY SURVEYOR  
DOUGLAS COUNTY, ORE.

COUNTY SURVEYOR FILE DATA  
DO NOT REMOVE FROM OFFICE

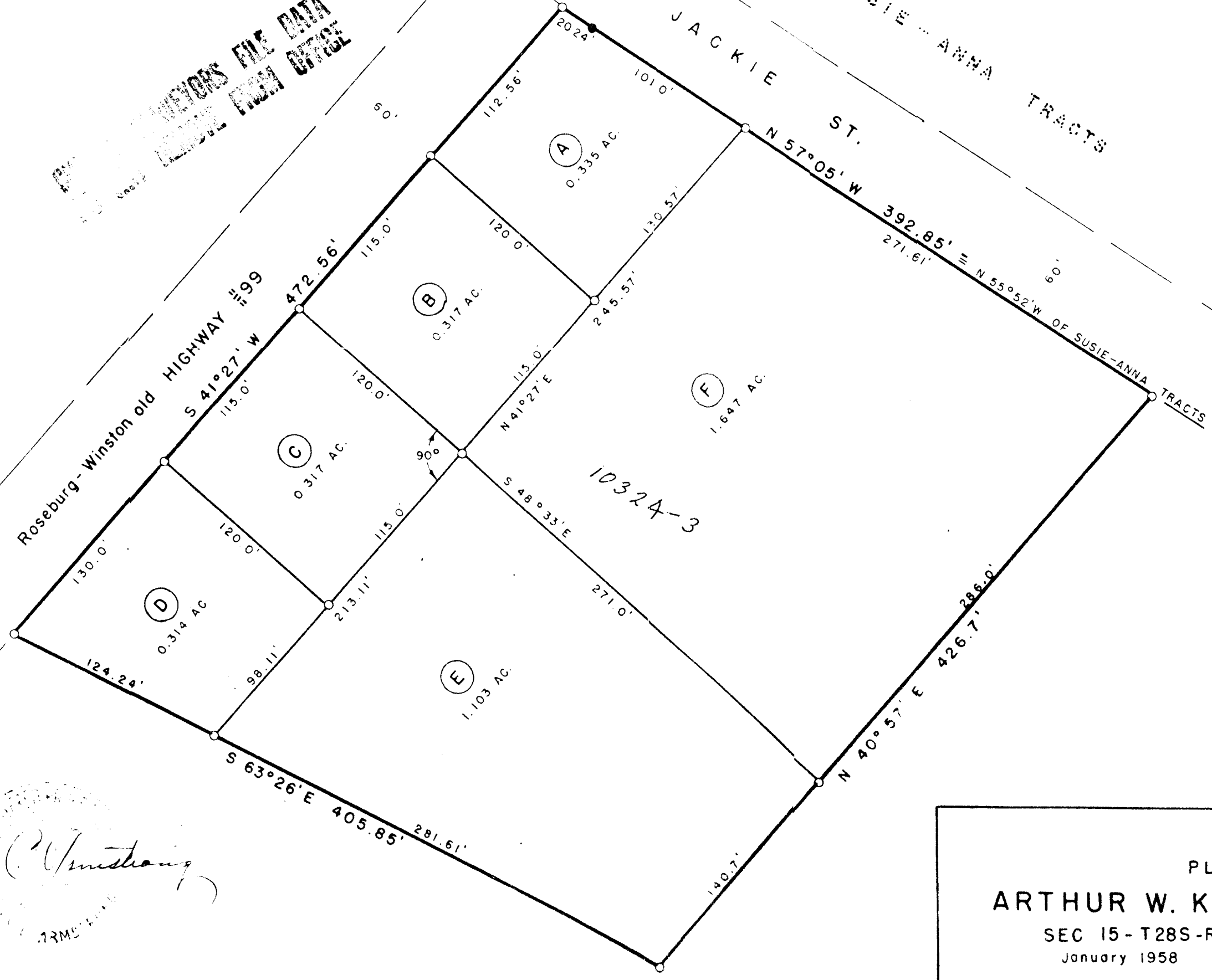
COUNTY SURVEYOR FILE DATA  
DO NOT REMOVE FROM OFFICE

SUSIE-ANNA TRACTS  
JACKIE ST.  
N 57°05' W

LANCE ST.

- = 3/4" ROD FOUND
- = 3/4" X 30" ROD SET

Roseburg-Winston old  
HIGHWAY #199  
S 41°27' W



COUNTY SURVEYOR FILE DATA  
DO NOT REMOVE FROM OFFICE

*Very Armstrong*  
SURVEYOR

PLAT OF  
**ARTHUR W. KOBERNIK PROPERTY**  
 SEC 15-T28S-R6W W.M. DOUGLAS CO., ORE.  
 January 1958  
 Scale 1" = 60'