

SURVEY TO ADD A PORTION OF LOT 13, BLOCK 2 TO LOT 14, BLOCK 2, ALL IN  
 SADDLE BUTTE HOMESITES NO. 1  
 SECTION 36, TOWNSHIP 26 SOUTH, RANGE 6 WEST, W. M.

SURVEYED FOR: Jay Taylor  
 SURVEYED BY: BHW Engineering & Surveying, Inc.  
 February 1979

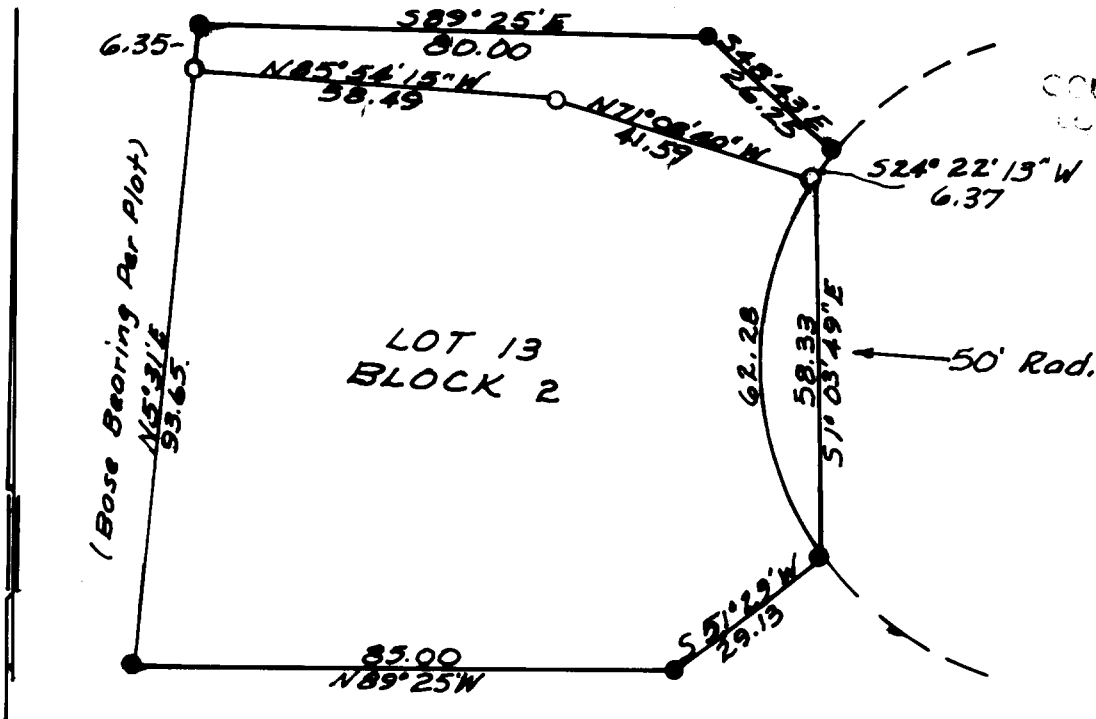
**COUNTY SURVEYORS FIVE DATA  
 DO NOT REMOVE FROM OFFICE**

Scale: 1" = 30'  
 ● Found rod w/alum. cap.  
 ○ Set 5/8" iron rod

FILED ✓  
 RECEIVED ✓

FEB 13 1979

COUNTY SURVEYOR  
 WASHINGTON COUNTY, ORE.  
 TB



REGISTERED  
 PROFESSIONAL  
 LAND SURVEYOR

*Ronald A. Quimby*

OREGON  
 JULY 14, 1978  
 RONALD A. QUIMBY  
 1654