

MAP OF DEED DESCRIPTION

IN SECTION 19, T. 27 S., R. 4 W., W.M., and RECORDED IN INSTRUMENT NO. 78-19903,
DEED RECORDS, DOUGLAS COUNTY, OREGON

FILED ✓
RECEIVED ✓h

FEB 13 1979

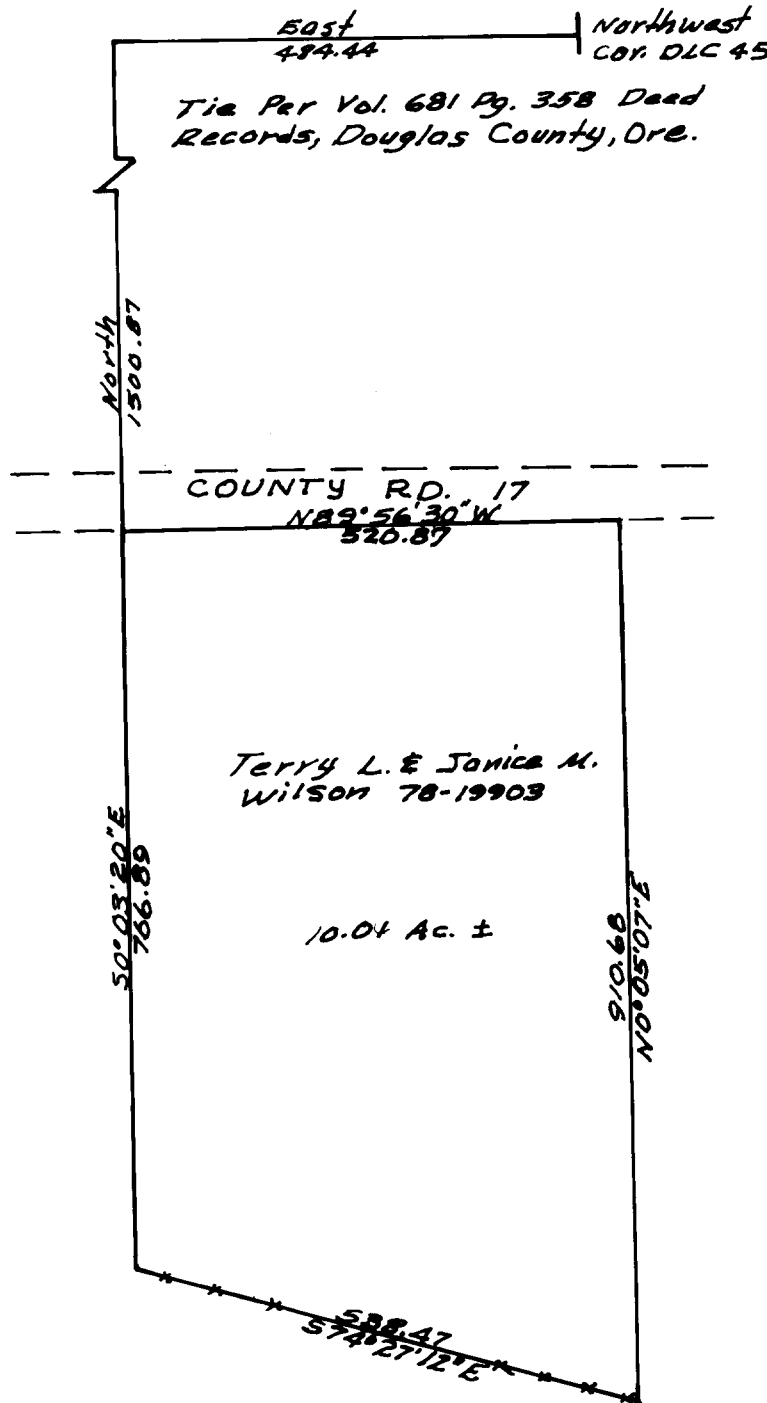
COUNTY SURVEYOR
DOUGLAS COUNTY, ORE.
JP

DESCRIPTION PREPARED FOR: L. Howard and V. Lois Ingram
DESCRIPTION PREPARED BY: BHW Engineering and Surveying, Inc.
OCTOBER 1977

Scale: 1" = 200'

Bearings based on M 32-79 N 0°14'30" W.

**COUNTY SURVEYORS FILE DATA
DO NOT REMOVE FROM OFFICE**



REGISTERED
PROFESSIONAL
LAND SURVEYOR

Romanso E. Ware

OREGON
NOV. 18, 1973
ROMANSO E. WARE
1005