

FILE ✓  
RECEIVED ✓

FEB 7 1979

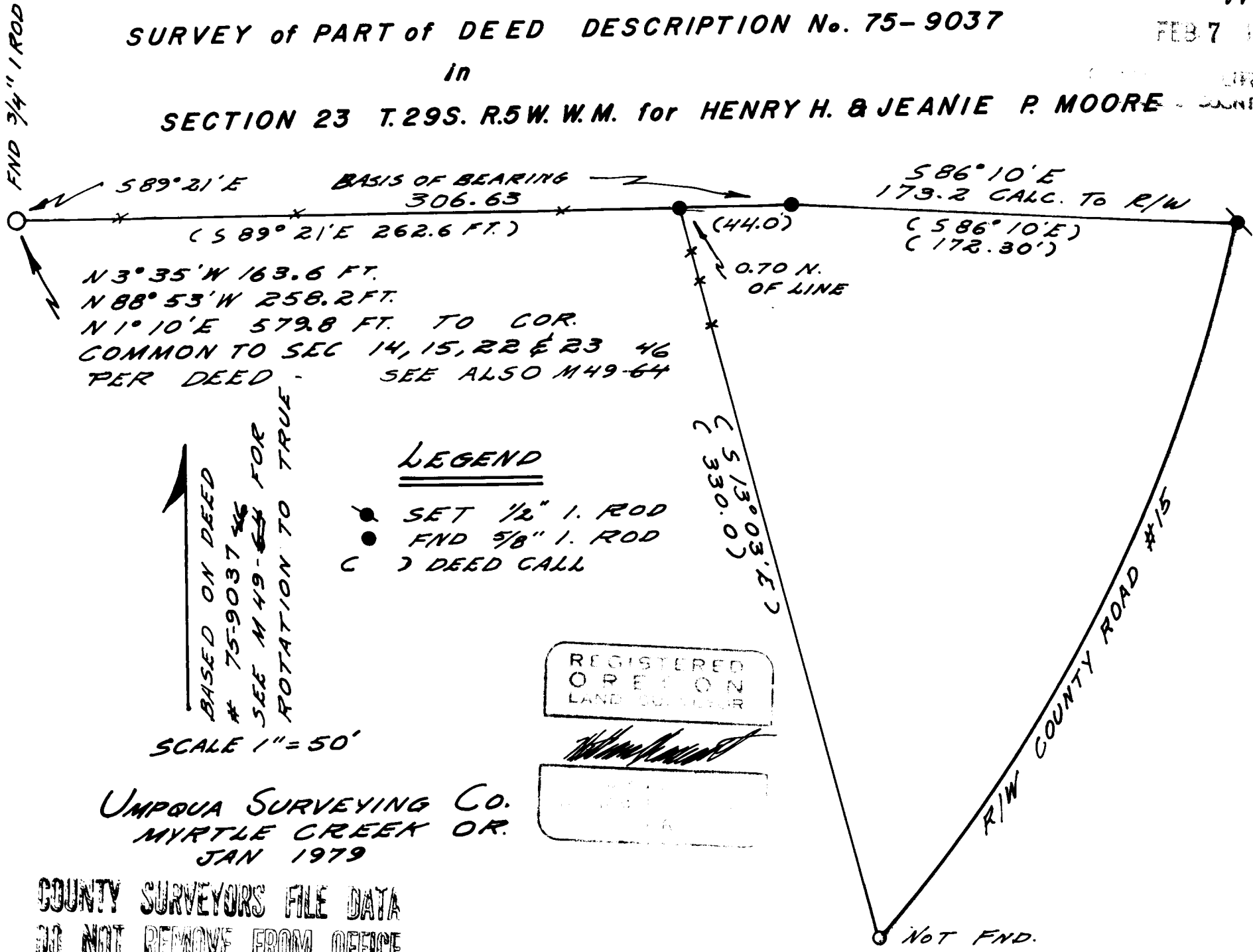
# SURVEY of PART of DEED DESCRIPTION No. 75-9037

in

## SECTION 23 T.29S. R.5W. W.M. for HENRY H. & JEANIE P. MOORE - COUNTY, OR.

SURVEYOR

TP



N 3° 35' W 163.6 FT.  
 N 88° 53' W 258.2 FT.  
 N 1° 10' E 579.8 FT. TO COR.  
 COMMON TO SEC 14, 15, 22 & 23 46  
 PER DEED - SEE ALSO M49-64

↑  
 BASED ON DEED  
 # 75-9037 46  
 SEE M49-64 FOR  
 ROTATION TO TRUE

### LEGEND

- SET 1/2" I. ROD
- FND 5/8" I. ROD
- ( ) DEED CALL

SCALE 1" = 50'

UMPQUA SURVEYING CO.  
 MYRTLE CREEK OR.  
 JAN 1979

REGISTERED  
 OREGON  
 LAND SURVEYOR

*[Signature]*

COUNTY SURVEYORS FILE DATA  
 DO NOT REMOVE FROM OFFICE