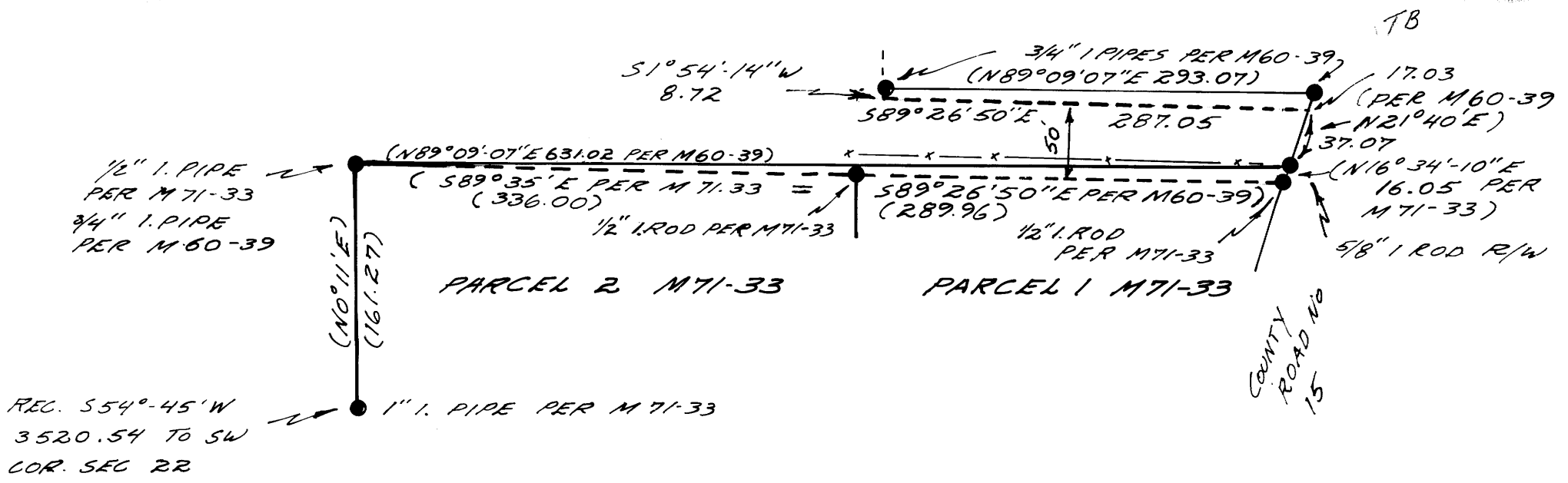


REVISION FOR SURVEY FOR RISA TOOR &
SECTION 22 T.29S. R.5W. W.M.

M. E. AGEE
MAP M 60-39



LEGEND:

- POINTS AS NOTED
- REVISION LINES

ROTATE M 71-33
08'-10" CW TO
M 60-39
1" = 100'

AUG 1978