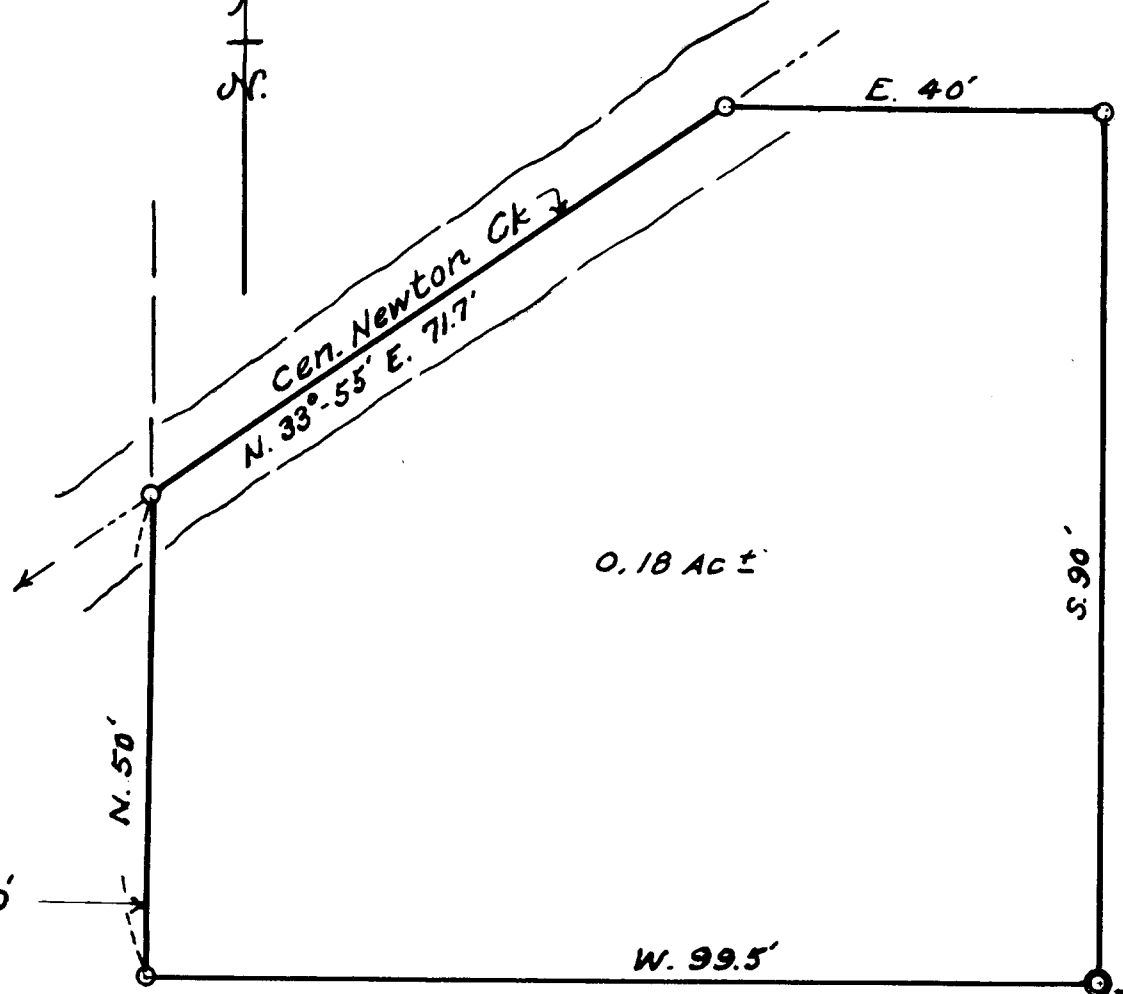


½ N. STEPHENS ST. OLD HY. 99

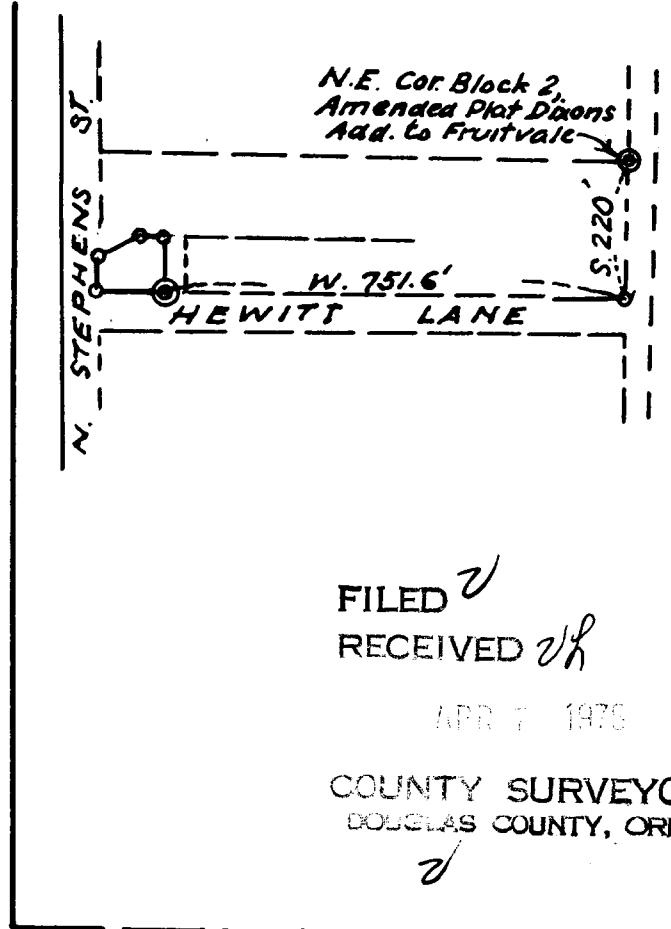


0.18 AC ±

30'

30' Driveway

30'



N.E. Cor. Block 2,  
Amended Plat Dixons  
Add. to Fruitvale

W. 751.6'  
HEWITT LANE

FILED ✓  
RECEIVED ✓

APR 7 1975

COUNTY SURVEYOR  
DOUGLAS COUNTY, ORE.

220'S. & 751.6' W. of NE Cor. Bk. 2,  
Amended Plat Dixons Add. to Fruitvale.

**COUNTY SURVEYORS FILE DATA  
DO NOT REMOVE FROM OFFICE**

L. J. HEWITT PROPERTY  
IN BLOCK 2, AMENDED PLAT  
OF DIXONS ADD. TO FRUITVALE,  
IN SEC. 12, T27S, R. 6 W. W.M.  
NOV. 1959 1" = 20' - 1" = 300'  
*Arthur Berger*