

12/20/78

T 32-6
S SE SEC 32

MAP OF PARTS OF FILED LAND PROJECT

T 33-6
N 1/2 S. 5

MINOR SURVEY

COUNTY SURVEYORS FILE DATA
DO NOT REMOVE FROM OFFICE

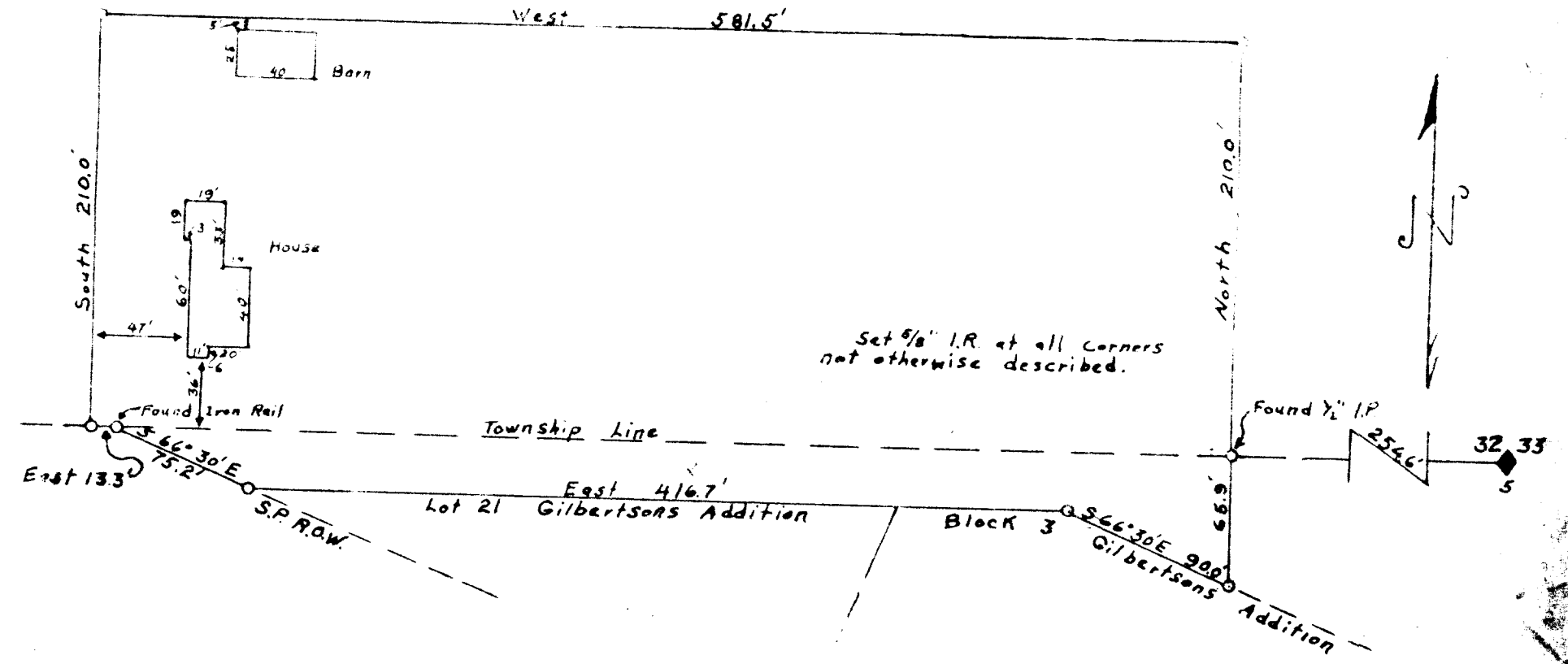
FILED
RECEIVED

MAR 24 1978

COUNTY SURVEYOR
DOUGLAS COUNTY, ORE.

TO 5000
5/3/77

COPY ONLY
FILED



COUNTY SURVEYORS FILE DATA
DO NOT REMOVE FROM OFFICE

D.J. Thero

S. File No. 58/165