

FILED
RECEIVED

OREGON CORNER RESTORATION FORM

DEC 4 1984

Section 13 Township 22 S Range 6 W
18 SW

County Douglas Date June 19, 1984

COUNTY SURVEYOR
DOUGLAS COUNTY, ORE.

Corner Designation

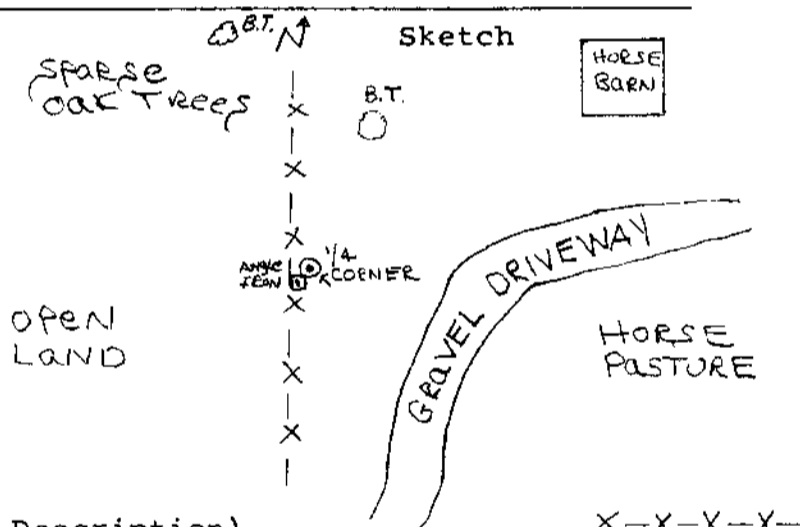
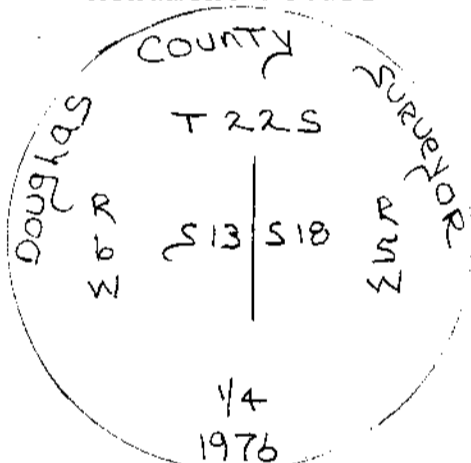
1/4 CORNER

- Condition Report Only
- Not Found
- Renewed
- Unrecorded
- Surveyed In
- Referenced Out

Previous Renewals/Surveys, etc. A. Victor Cangle, Survey Party from the Douglas County Surveyors office, set 1"x30" I.P. 25" in the ground with Brass cap attached, December 1976.

Monument(s) & Accessories Found: (Condition and Source)
we found both the 1"x3"x32" Channel Iron, and the Re-newed 1"x30" I.P. with brass cap, located near a N.S. fence. also located was a 20" B. oak, now a 24" oak, bearing N. 8 1/2 E. 19.8 ft. all the above monuments and accessories were found to be in good condition. also found was a 17" black oak bearing N 1/2 W 168.2' with healed blaze and tag

Monument Detail



Monument Set (Procedures and Description)

New Accessories

Location & Comments

1/4 corner located just at N.S. fence line. The 2 1/2 brass disc on I.P. was elevated approx 4" above the ground line.

Compass Declination _____
 Firm/Agency Oregon Dept. of Transportation
 Address _____
 Party Chief L. Lothrop
 Notes R. Small
 Witness P.O. Day

Surveyor's Seal

REGISTERED
PROFESSIONAL
LAND SURVEYOR

Martin G. Havig

OREGON
SEPT. 23, 1977
MARTIN G. HAVIG
1212