

FILED
RECEIVED

DEC 4 1984

OREGON CORNER RESTORATION FORM

Section S12/S7 Township 22S Range 6W

County Douglas Date June 19, 1984

COUNTY SURVEYOR
DOUGLAS COUNTY, ORE.

Corner Designation

SECTION CORNER

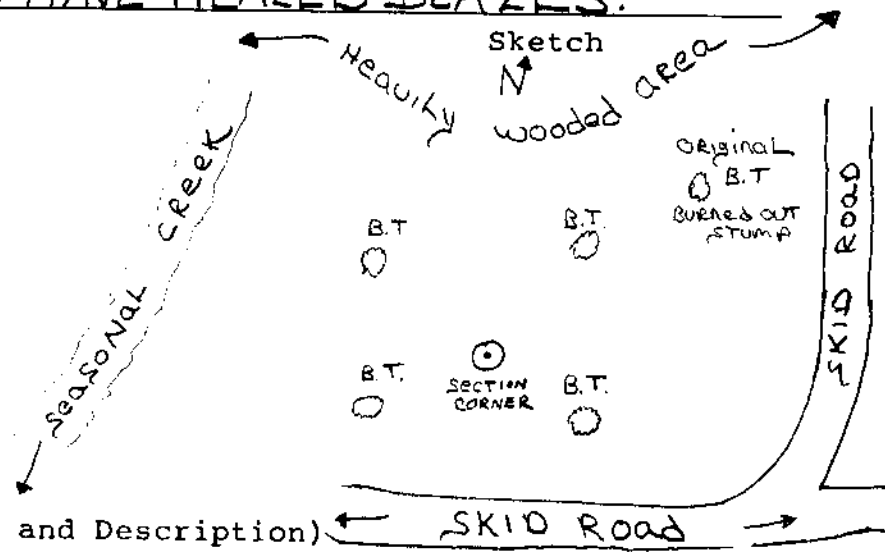
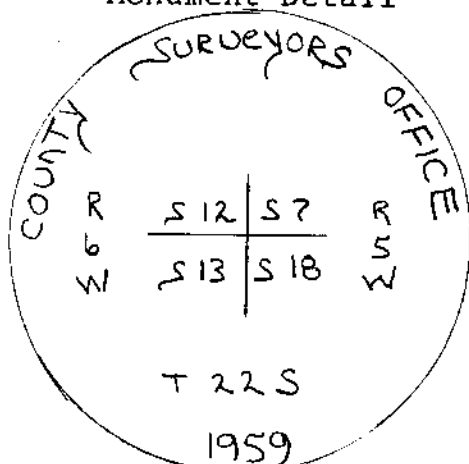
- Condition Report Only
- Not Found
- Renewed
- Unrecorded
- Surveyed In
- Referenced Out

Previous Renewals/Surveys, etc. Renewed by James Byron, Deputy, Milo Godfrey: S.A. Blaw. Done for W.E. Clevenger in June 1959. C.S. File # 49/158.

Monument(s) & Accessories Found: (Condition and Source)

Found was a 2 1/2" Brass Disc, mounted on galvanized pipe in good condition. Five B.T. were located, one original. The original B.T., a 24" rotted fir stump, bearing N 69 1/2° E, 72.6 ft was located, in addition to a 14" fir, now an 18" fir bearing S 16° E, 22.1 ft, a 10" fir, now a 14" fir bearing S 79° W, 16.0 ft, a 12" fir, now a 20" fir, bearing N 35° E, 15.7 ft, a 12" fir, now 18" fir, bearing N 42° W, 20.0 ft. ALL TREES HAVE HEALED BLAZES.

Monument Detail



Monument Set (Procedures and Description)

New Accessories

Location & Comments

SECTION CORNER
located, is approx
1" above the
groundline. area
in which located
has been partially
logged or trees
have been thinned.

Compass Declination _____
 Firm/Agency Oregon Dept
of Transportation
 Address Cobb ST
Roseburg, Oregon, 97470
 Party Chief L. Hathrop
 Notes P. Small
 Witness P. O'Fall

Surveyor's Seal

REGISTERED
PROFESSIONAL
LAND SURVEYOR

Martin S. Havig

OREGON
SEPT. 23, 1977
MARTIN G. HAVIG
1212